

August 15, 2025

Asset Management Committee

Khae Bohan, Central San

Committee Co-Chair

Rebecca Overacre, EBMUD

Committee Co-Chair



Table of Contents

1. Co-Chairs
2. Asset Management Committee Timeline
3. Major Topics
4. Virtual Workshops
5. In Person Workshops
6. Thank You

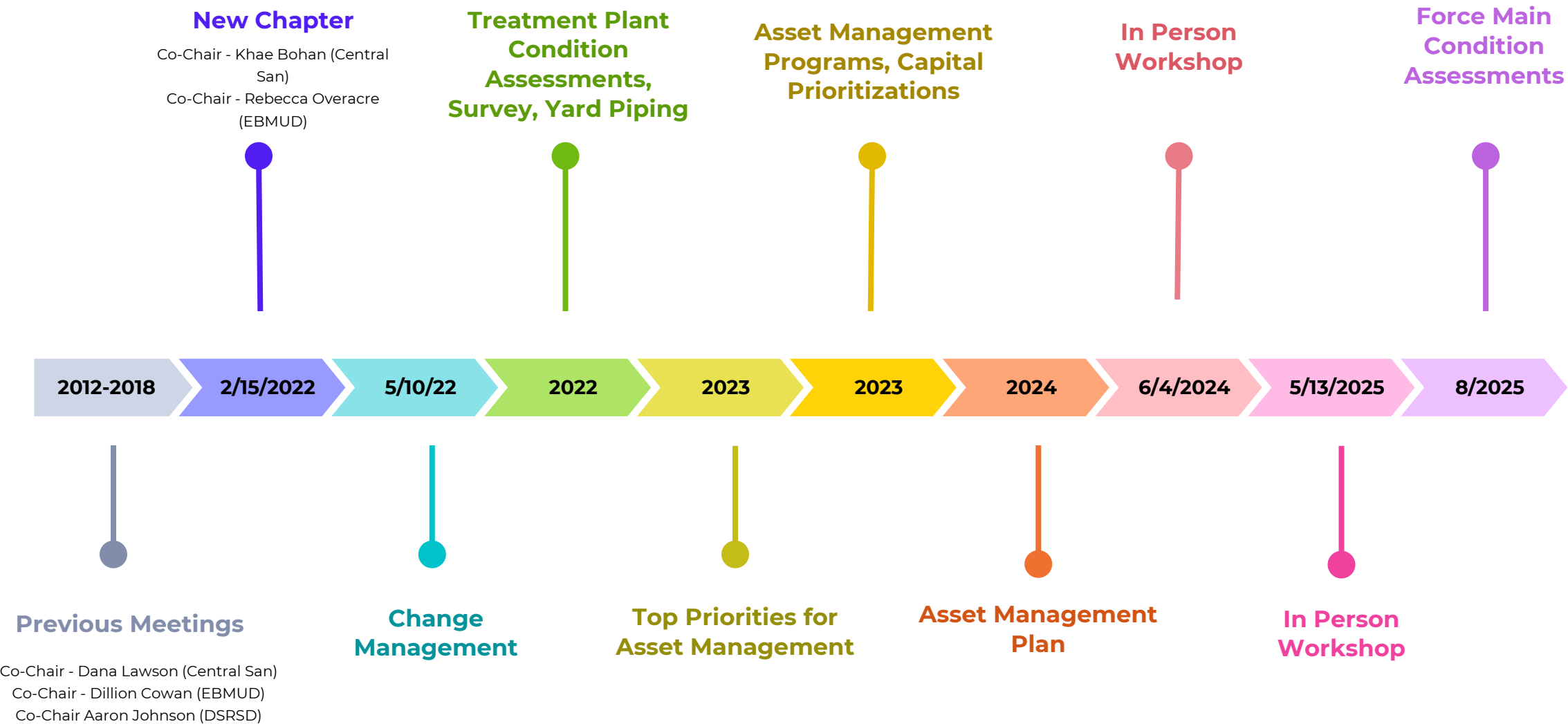


Co-Chairs

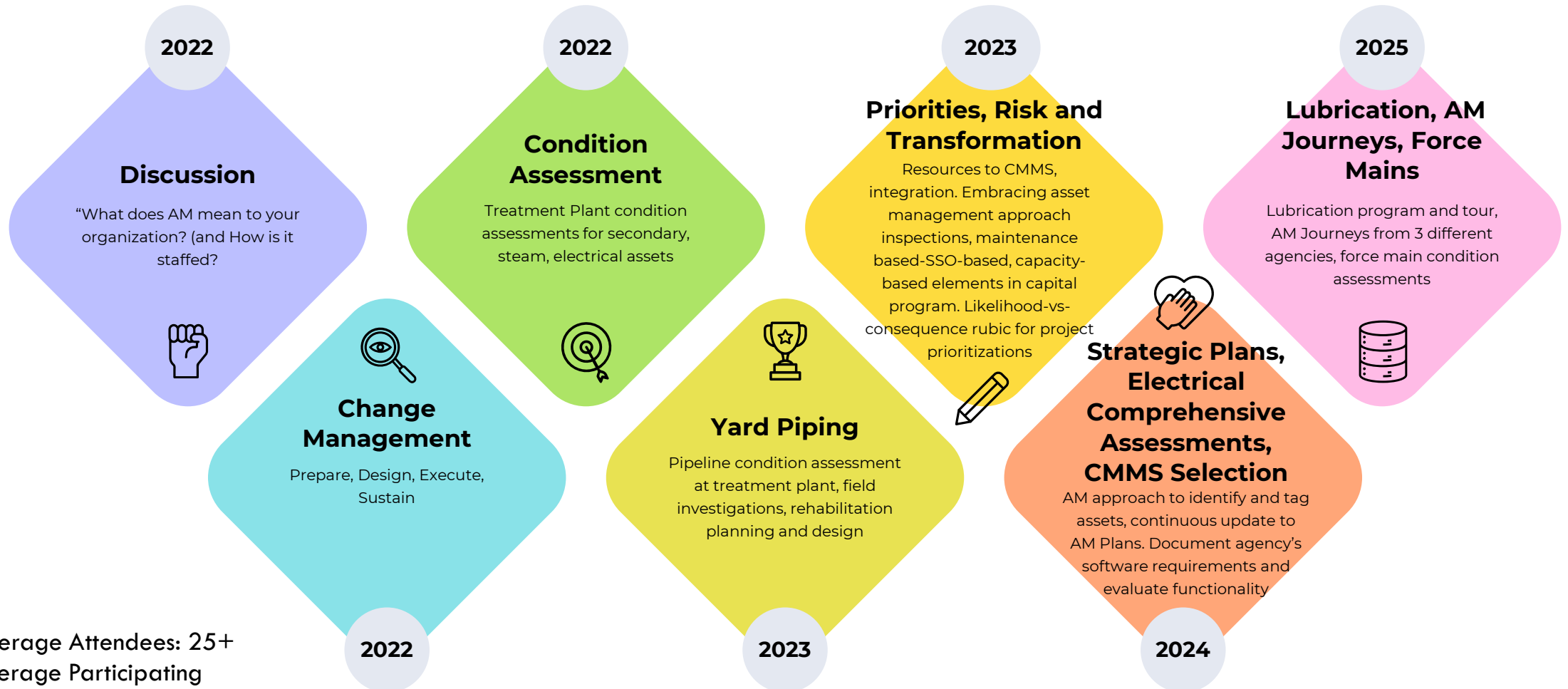
- Khae Bohan, Asset Management Program Administrator, Optimizations at Central San
- Rebecca Overacre, Associate Civil Engineer, Wastewater Planning at EBMUD
- Goals:
 - Peer education and support



Asset Management Committee Timeline



Major Topics



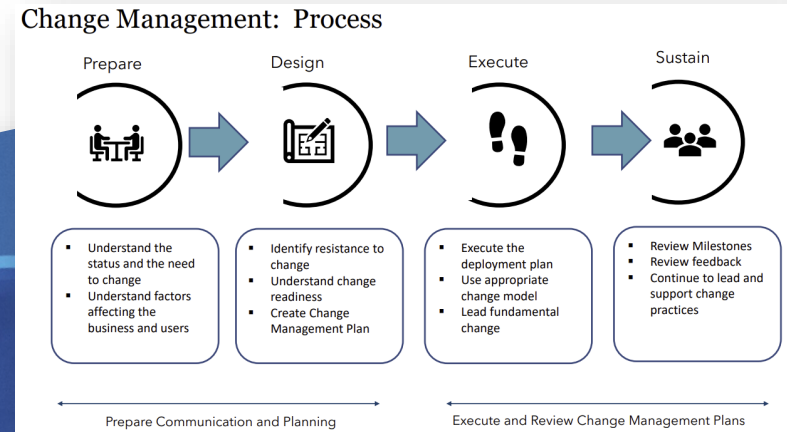
- Average Attendees: 25+
- Average Participating Member Agencies: 10+

Virtual and In-Person Workshops

- Virtual
 - One hour – presentations and discussions
 - Vary topics from high level to asset level
 - Round table discussions and break up groups



Risk, Renewal, and Reduced Regulation:
Transforming Ross Valley Sanitary District's Regulatory-
Driven O&M and Capital Programs
Allan Scott and Steve Moore



BACWA - Wastewater Asset Management Survey

Thursday, August 18, 2022

In-Person Workshops

- Two Workshops at Central San
 - 6/13/2024
 - 23 attendees from 10+ member agencies
 - CMMS Selection
 - Electrical Comprehensive Asset Evaluation
 - Panelists Q&A
 - 5/13/2025
 - 33 attendees from 12 member agencies
 - Focused on Asset Management Journeys – Sonoma Water, West County Wastewater, Silicon Valley Clean Water



Thank you!

More to come!

