

**01** **Group Annual Report**

**02** **Recent Milestones Compliance Summary**

**03** **Role of Precipitation on Meeting Nutrient Limits**

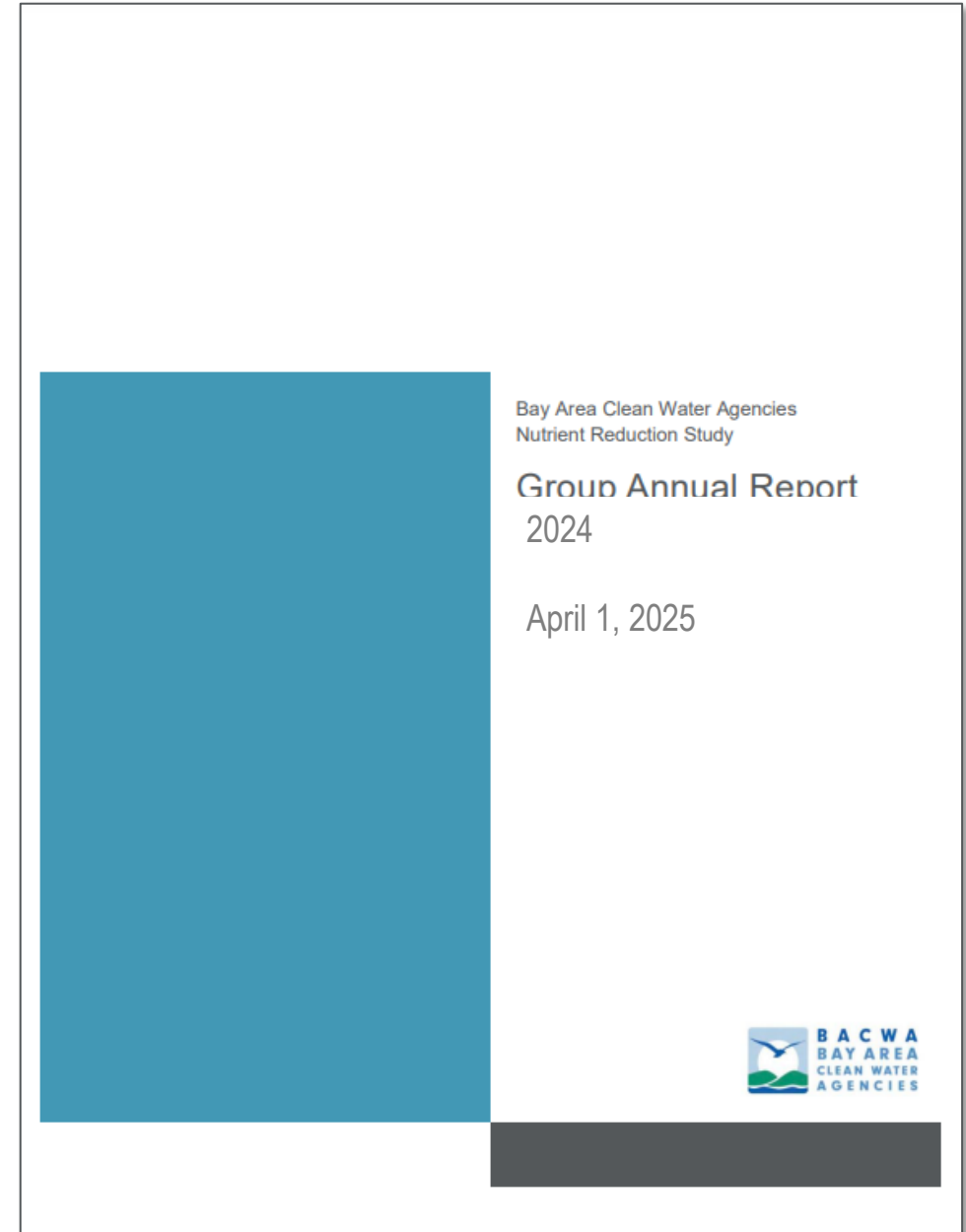
**04** **Next Steps:  
3<sup>rd</sup> Nutrient Watershed Permit**

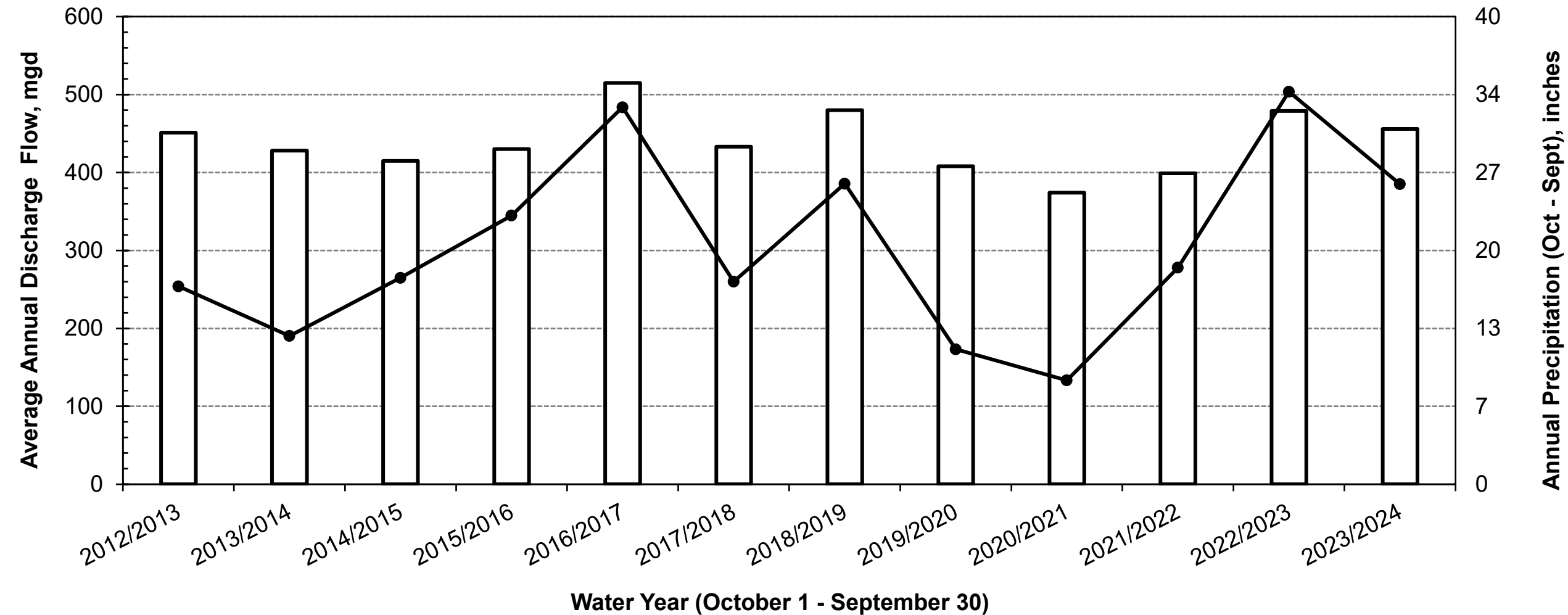
01

# **Group Annual Report**

# Group Annual Report (Submitted 4/1/25)

- Influent Flows and Loads:
  - 21 Quarters worth of data
  - Limited to Plants >10 mgd permitted capacity
- Discharge Flows and Loads:
  - Flows: dry season increased 2% from 2023  
(4% higher than average)
  - TIN: dry season loads similar the last 4-years  
(7% less than average)
- Several dischargers continued optimization efforts (e.g., EBMUD) and upgrades are in process (e.g., San Mateo, Palo Alto, etc.)
- Recycled Water Volumes: 15% less than 2022  
(attributed to a relatively wet spring in 2023)
- **Milestone Reporting**



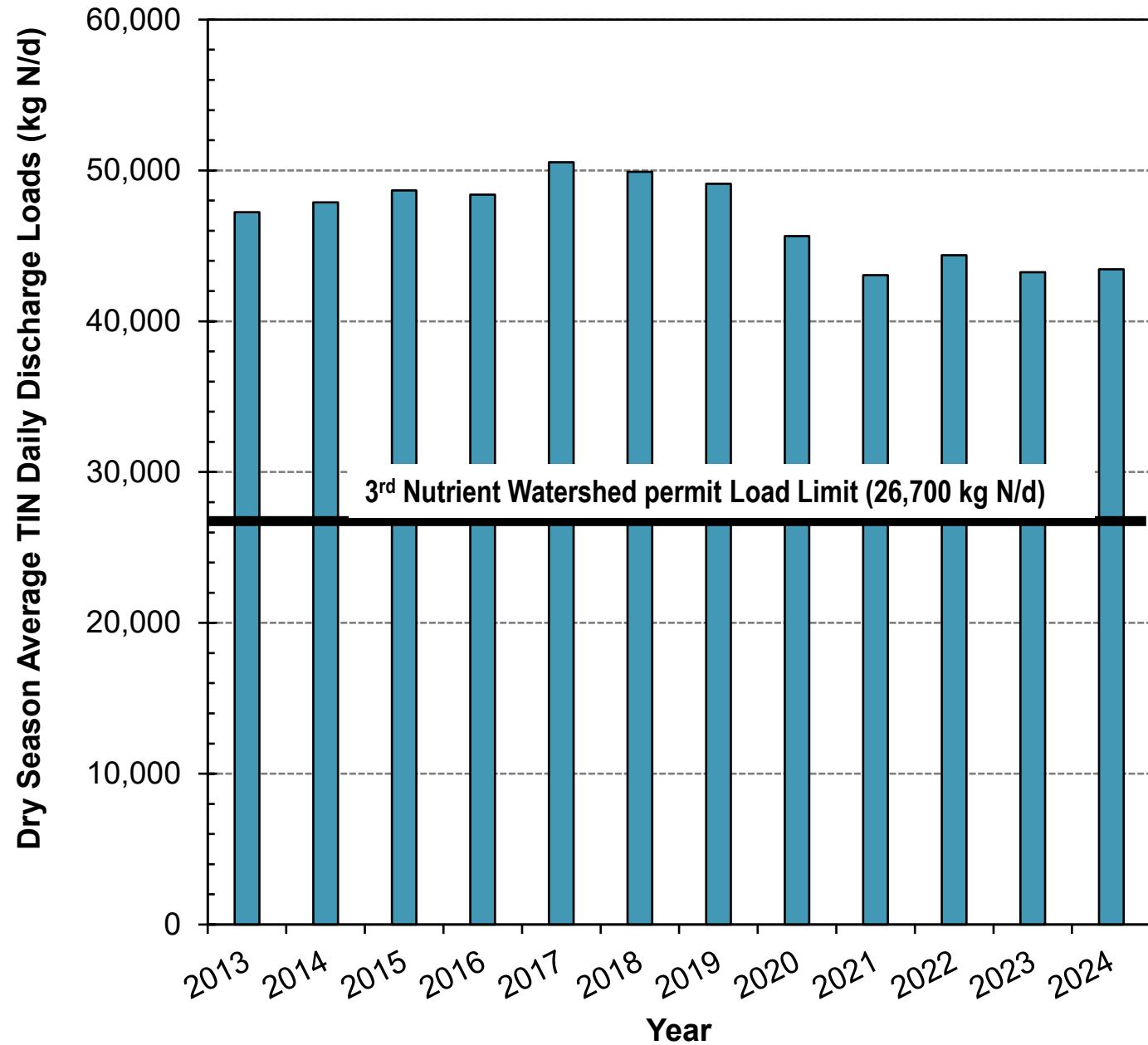


**Flows for 2023/2024:**

- Precipitation Source: <https://ggweather.com/sf/monthly.html>
- 26 inches of rain (3<sup>rd</sup> highest since sampling began; compared to ~33 inches the previous year)

# Baywide TIN Loadings

- Peak TIN Load:  
50,700 kg N/d in 2017
- 2024 dry season: 43,700 kg N/d
- ~15% decline since 2017
- Steady-State TIN discharge since 2021?

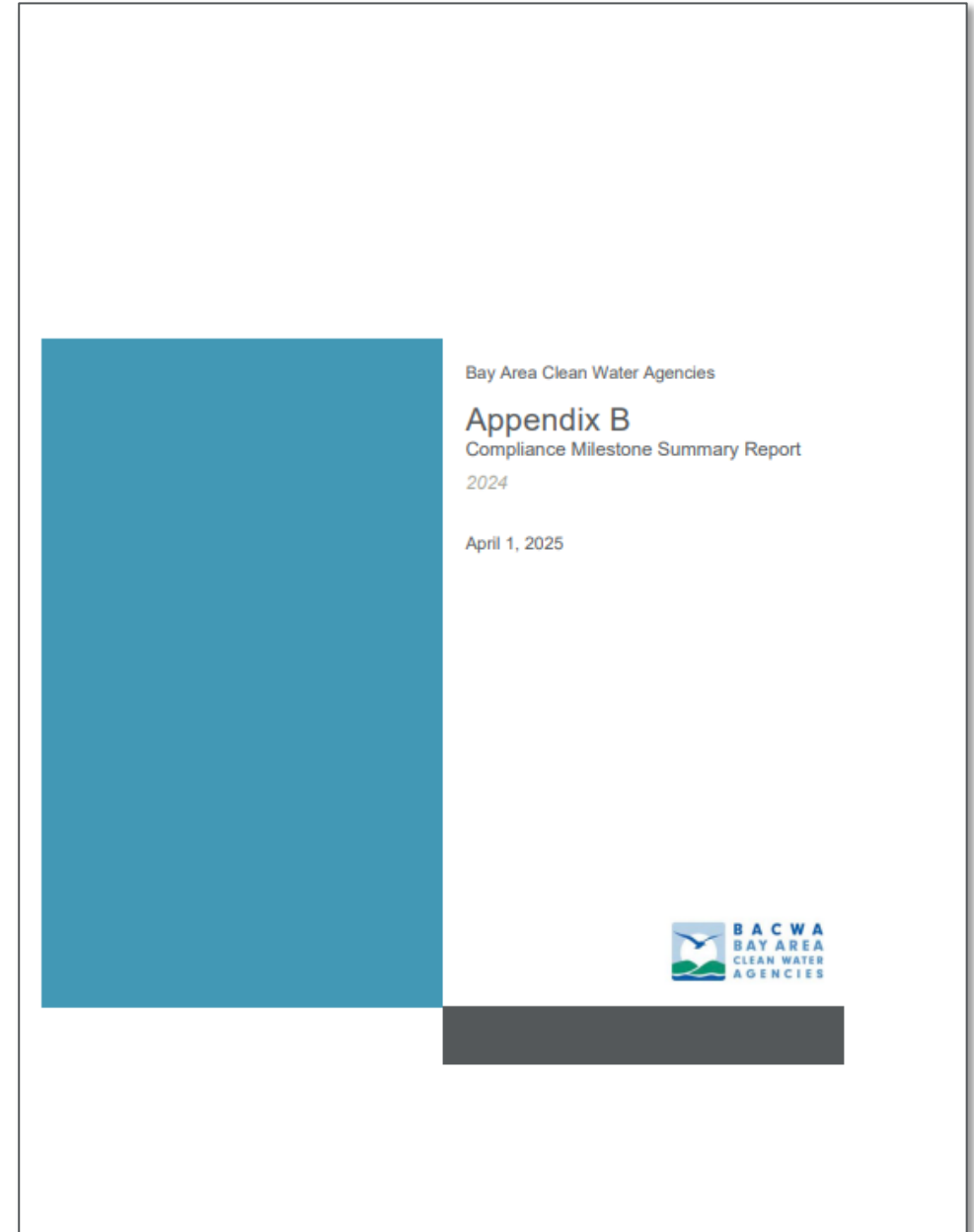


02

**Recent Milestones  
Compliance Summary**

# Compliance Milestones Summary

- Included as an Appendix in the Group Annual Report  
(Submitted on 4/1/25;  
[BACWA Nutrient Watershed Permit Group Annual Report for 2023-2024](#))
- 3<sup>rd</sup> Nutrient Watershed Permit Requirement (Annual Submission):
  - Status of how each agency is progressing for meeting TIN limits
  - Specific Milestones Elements:
    - Identify alternatives and perform analyses
    - Compliance plan
    - Schedule/milestones
    - Project details



# Compliance Milestones: General Overview

Table 1. Summary of Questionnaire Results (Color Coded by Grouping; White = Early Actor, Light Grey = Compliance Pathway Identified; Dark Grey = Compliance Alternatives Identified)

A. Discharger <sup>a</sup>	B. ADWF Permitted Capacity (mgd)	C. Group <sup>b</sup>	D. Early Actor	E. Will Meet Final Effluent Limit	F. Projects Completed or In-Progress	G. Anticipated Compliance Pathway	H. Prelim. Alternatives Include <sup>c</sup>					I. Interested in Purchasing Credits	J. Schedule Summary for Projects
							NbS <sup>d</sup>	TTI <sup>d</sup>	OP <sup>d</sup>	RW <sup>d</sup>	NT <sup>d</sup>		
American Canyon, City of	2.5	1	Yes	Yes	RW; TTI	-	-	-	-	-	-	-	Complete
Benicia, City of	4.5	3	No	-	-	-	Yes	Yes	Yes	Yes	Yes	Maybe	TBD
Burlingame, City of	5.5	3	No	-	-	-	No	Yes	Yes	Yes	No	-	TBD
Central Contra Costa Sanitary District	53.8	3	No	-	-	-	Yes	Yes	No	Yes	Yes	Maybe	TBD
Central Marin Sanitation Agency	10	2	No	-	-	TTI; OP	-	-	-	-	-	-	Alternative to be selected in 2025
City of Richmond Municipal SD	16	1	Yes	Yes	TTI	-	-	-	-	-	-	-	TBD
Delta Diablo	19.5	2	No	-	-	TTI; NT	-	-	-	-	-	-	Construction to begin in 2026
EBDA (DSRSD, City of Hayward, City of Livermore, Oro Loma SD, City of San Leandro, Union SD)	107.8	1	Yes	Unsure	NbS; TTI; OP; RW	-	-	-	-	-	-	Maybe	DSRSD: Complete. Hayward: 2030. Livermore: RW complete, treatment evaluation is underway. Oro Loma SD: Complete. San Leandro: 2026. Union SD: Phases in 2027, 2029, 2031.
EBMUD	120	1	Yes	Unsure	OP	-	-	-	-	-	-	-	TBD
Fairfield Suisun SD	23.7	1	Yes	Yes	TTI; OP	-	-	-	-	-	-	-	2033
Millbrae, City of	3	2	No	-	-	RW, NT	-	-	-	-	-	-	Pre-design activities in 2025
Mt. View SD	3.2	1	Yes	Yes	TTI, NbS	-	-	-	-	-	-	-	Complete, but pursuing additional alternatives with schedule TBD.
Novato SD	7	1	Yes	Unsure	TTI; RW	-	-	-	-	-	-	-	Complete
Palo Alto, City of	39	1	Yes	Yes	TTI	-	-	-	-	-	-	-	2028
Pinole, City of	4.06	1	Yes	Yes	TTI	-	-	-	-	-	-	-	TBD. Study underway.
Rodeo SD	1.14	3	No	-	-	-	Yes	No	Yes	No	Yes	Yes	TBD
San Jose/Santa Clara WPCP	167	1	Yes	No	TTI; OP; RW	-	No	Yes	Yes	Yes	No	-	See individual response
San Mateo, City of	15.7	1	Yes	Yes	TTI	-	-	-	-	-	-	-	2025
Sausalito-Marin City SD	1.8	3	No	-	-	-	No	Yes	Yes	Yes	Yes	Maybe	TBD
SD N. 5 of Marin County (Tiburon)	0.98	3	No	-	-	-	-	Yes	-	-	-	Yes	TBD
Sewerage Agency of Southern Marin	3.6	3	No	-	-	-	Yes	No	No	Yes	Yes	Maybe	TBD
SFO Airport	2.2	1	Yes	Yes	TTI; RW	-	-	-	-	-	-	-	TBD. 50 percent design for current phase in 2025.
SFPUC Southeast	85.4	1	Yes	Yes	-	TTI	-	-	-	-	-	-	TBD. Design-build contractor to be selected 2025.
SFPUC Treasure Island	2.0	1	Yes	Yes	TTI; RW	-	-	-	-	-	-	-	2026
Silicon Valley Clean Water	29	3	No	-	-	-	-	Yes	Yes	Yes	-	-	TBD. Evaluating 4 alternatives.
South San Francisco and San Bruno	13	2	No	-	-	TTI	-	-	-	-	-	-	TBD. Evaluating process modification alternatives in 2025.
Sunnyvale, City of	29.5	1	Yes	Yes	TTI	-	-	-	-	-	-	-	2028
Vallejo Flood and Wastewater District	15.5	2	No	-	-	TTI; NT	-	-	-	-	Yes	-	TBD. Evaluating process alternatives in more detail in 2025 and 2026.
West County Wastewater District	12.5	1	Yes	Yes	TTI; OP; RW	-	-	-	-	-	-	-	Complete

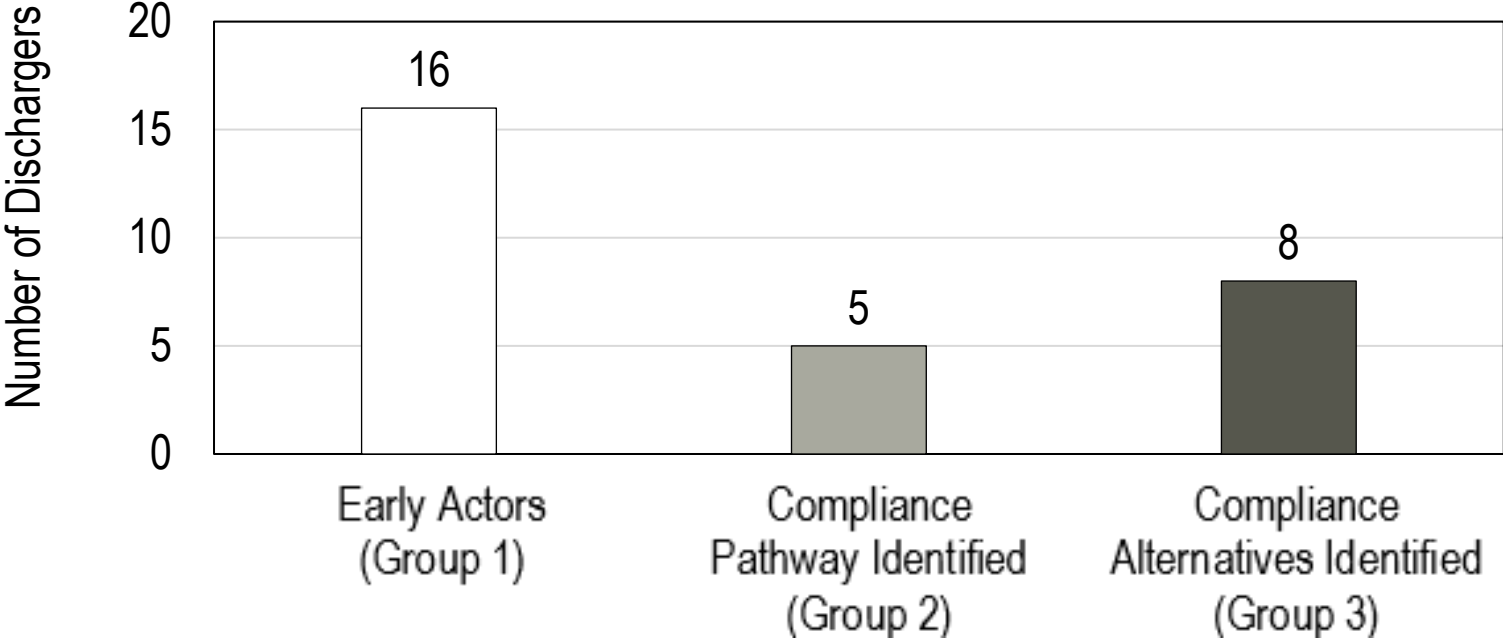
a. Dischargers not included here due to dry season discharge prohibitions: Sonoma Valley County Sanitation District, Napa Sanitation District, City of Petaluma, and Las Gallinas Valley Sanitary District. Other Dischargers not included here: Crockett Community Services District (Port Costa Wastewater Treatment Facility) and Sanitary District Number 5 of Marin County (Paradise Cove Treatment Plant) (see Section 0).

b. Group 1 consists of Early Actors; Group 2 consists of other Dischargers that have identified a compliance pathway; Group 3 consists of other Dischargers that have identified preliminary alternatives.

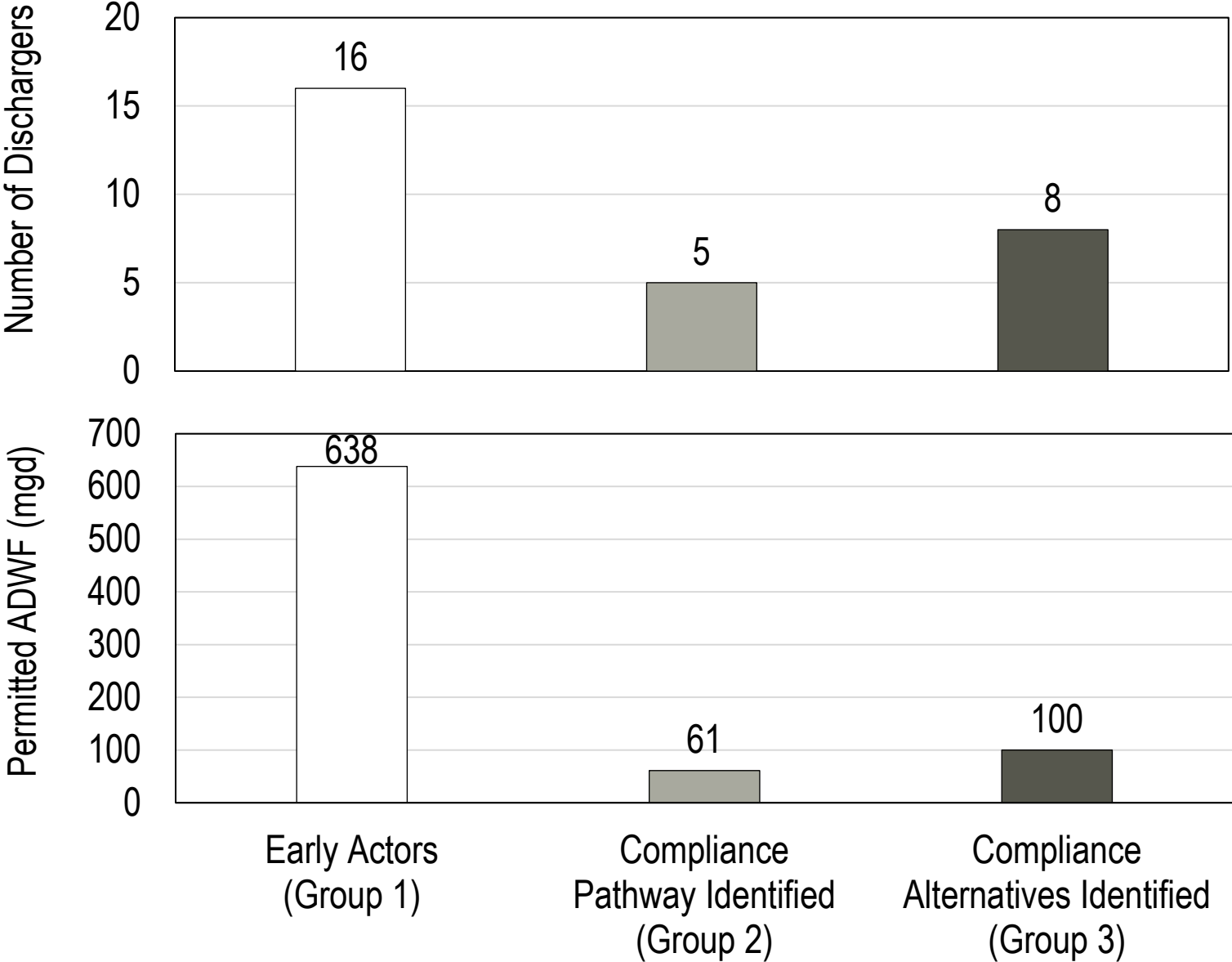
c. In addition to projects listed under columns F and G.

d. NbS = Nature-based Solutions, TTI = Traditional Treatment Infrastructure; OP = Optimization; RW = Recycled Water, and NT = Nutrient Trading.

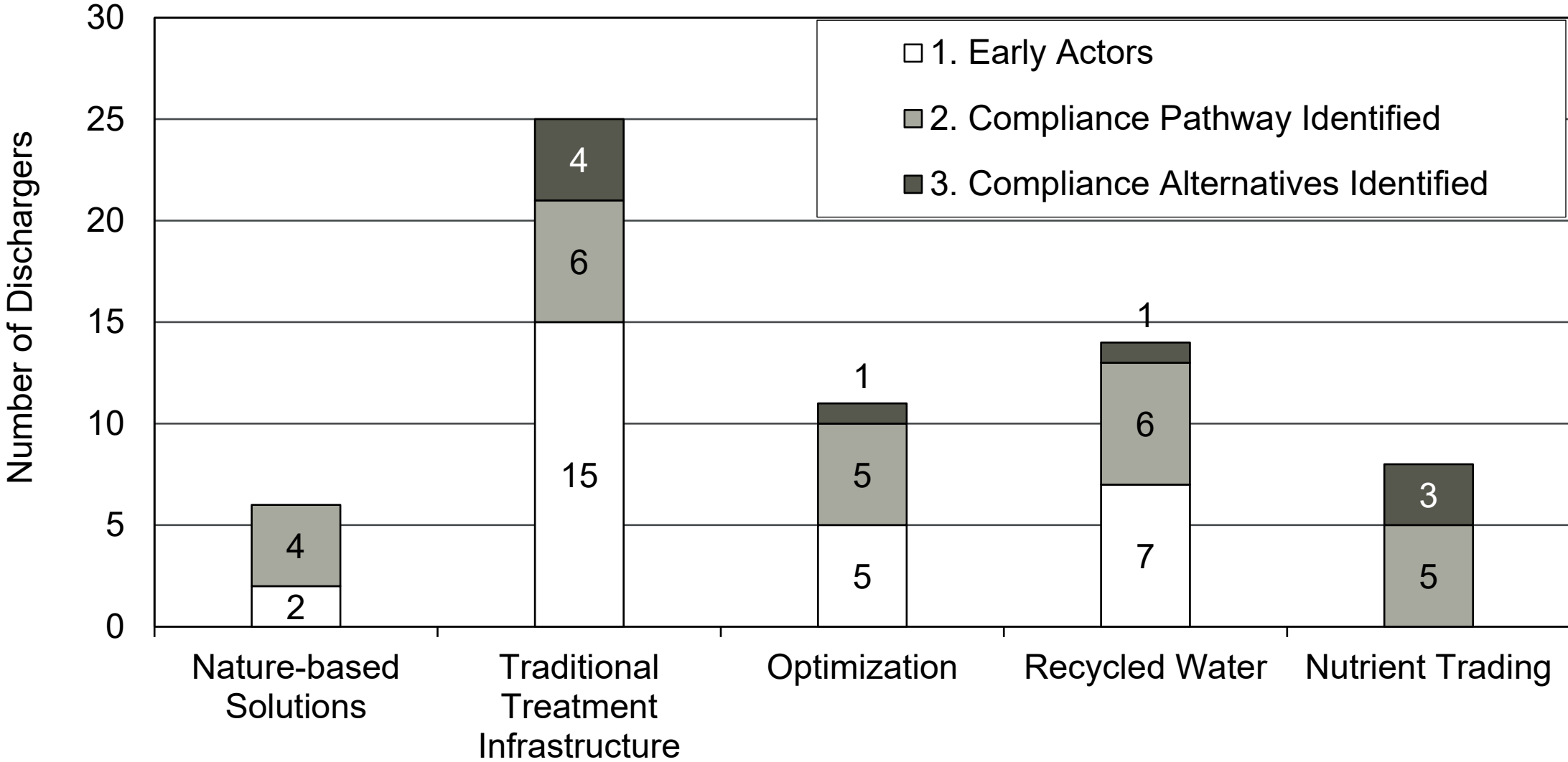
# Compliance Milestones: Findings



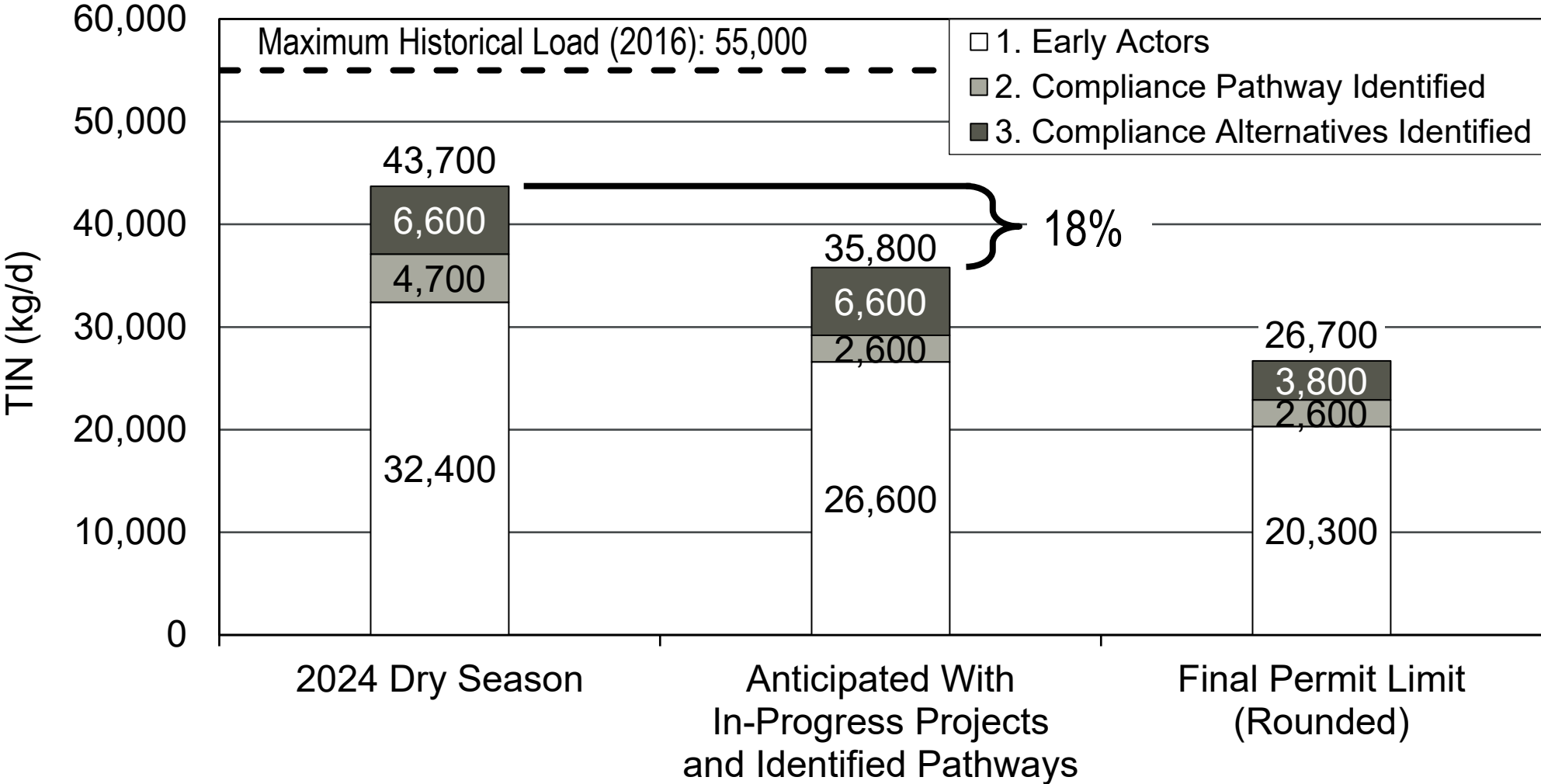
# Compliance Milestones: Findings



# Compliance Milestones: Findings



# Compliance Milestones: Findings



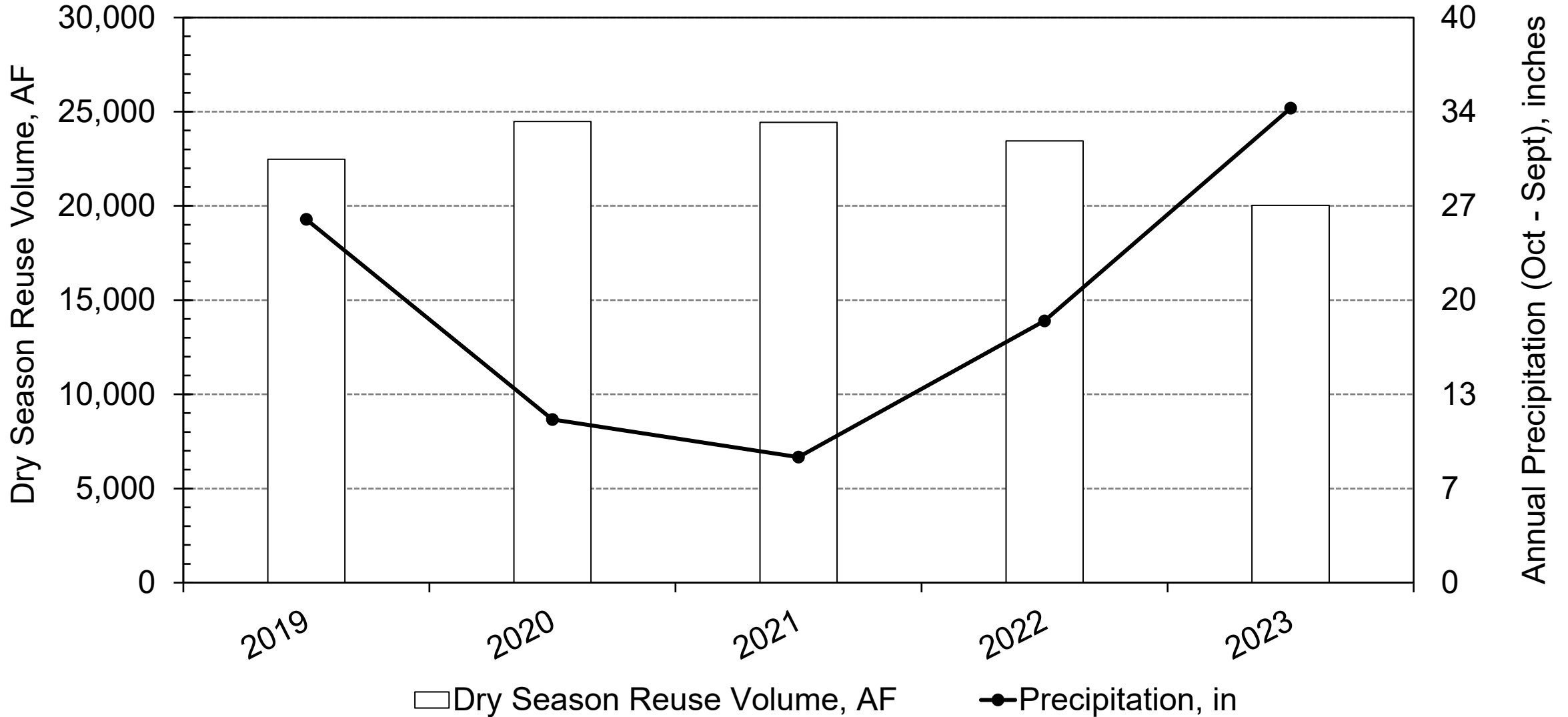
\* The middle column uses the 2024 Permit TIN load limit values for Early Actors that anticipate meeting final effluent limits (i.e., “Yes” in Column E of Table 1) and agencies that have already identified a compliance pathway (i.e., “2” in Column C of Table 1). The values for agencies that have identified compliance alternative(s) used their respective 2024 dry season values (i.e., “3” in Column C of Table 1) as their anticipated values are unclear at this time.

\*\* The total values might vary from the sum of the listed values by plant due to rounding.

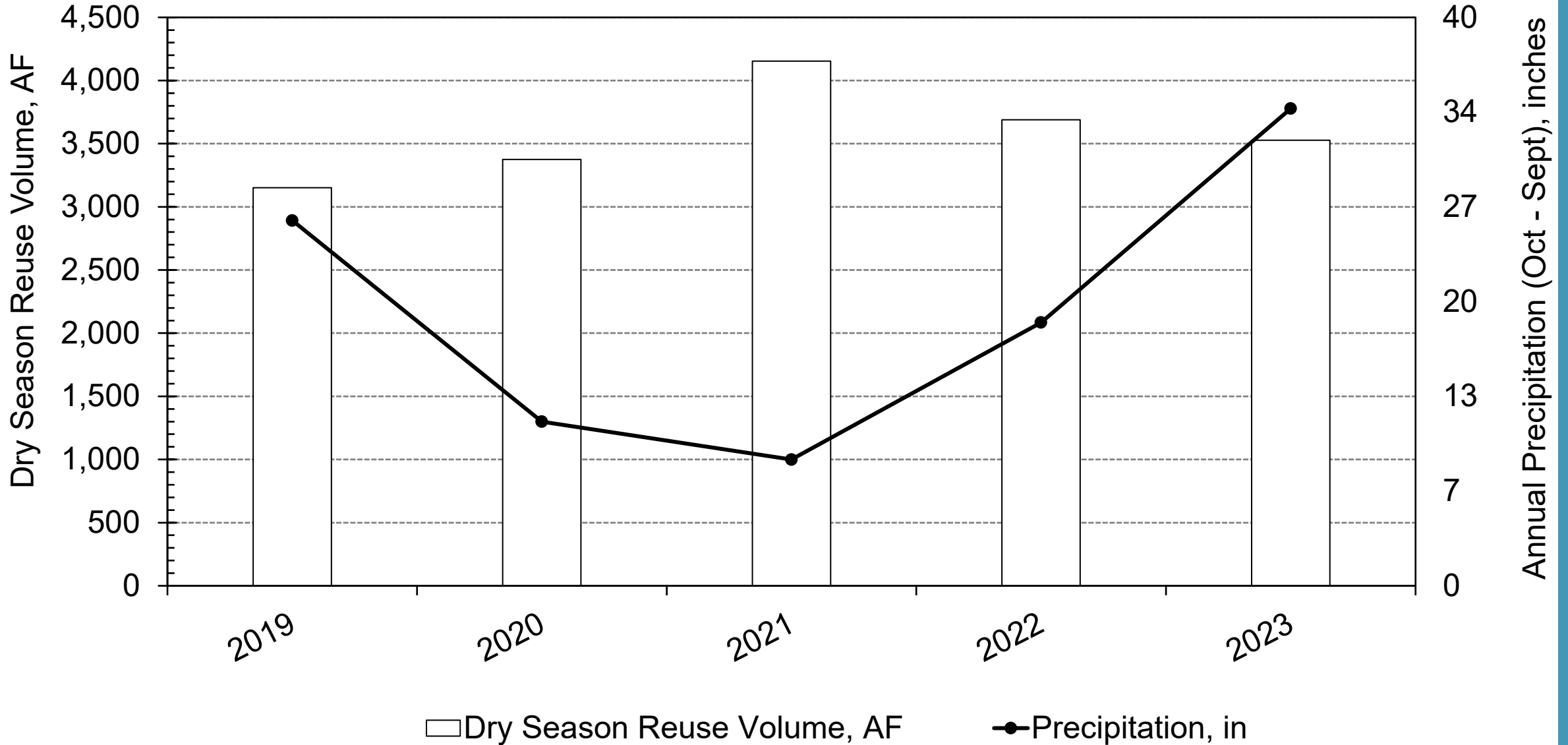
03

## **Role of Precipitation on Meeting Nutrient Limits**

# Role of Precipitation on Reuse Demands (Baywide)



# Role of Precipitation on Reuse Demands (DSRSD)



04

**Next Steps: 3<sup>rd</sup> Nutrient  
Watershed Permit**