



# **BACWA Annual Meeting: Group Annual Report & Recycled Water DRAFT Results**

**May 5, 2023**



**BACWA  
BAY AREA  
CLEAN WATER  
AGENCIES**

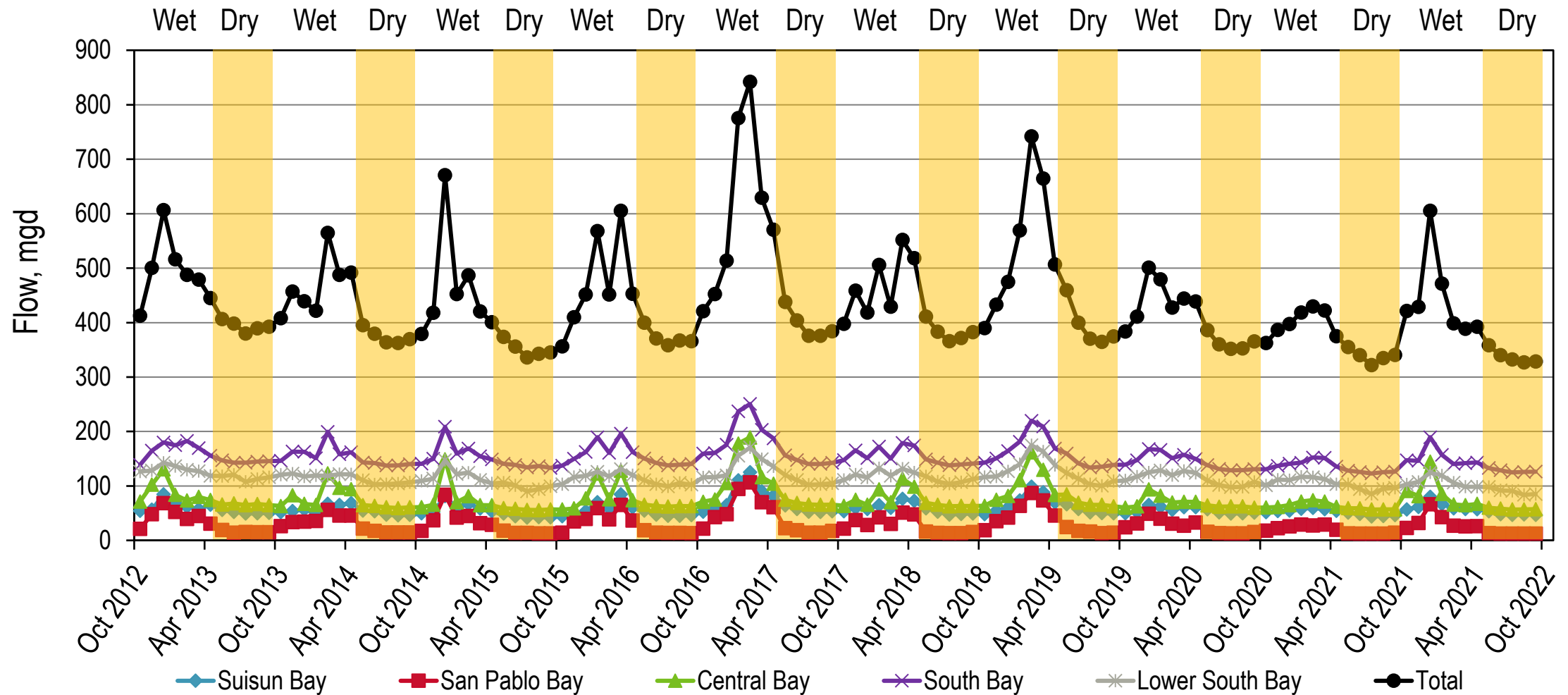
# Group Annual Report: Submitted to the Water Board February 2023

- **History:** data since July 2012  
(annual reports; first report submitted in 2015)
- **Parameters of Interest:** flow and nutrient species
- **Averaging Period:** May 1 – Sept 30 (dry season) and year-round
- **Locations:** influent, discharge, and recycled water
- **Discharge Flows and Loads:**
  - 2021/2022 was wetter than the last couple years
  - Dry season flows lowest since sampling began in 2012
  - Loads had modest increases since prior year
- **Optimization/Upgrades:** several dischargers continued optimization efforts (e.g., San Jose) and upgrades are in process (e.g., San Mateo, Palo Alto, Central San, etc.)



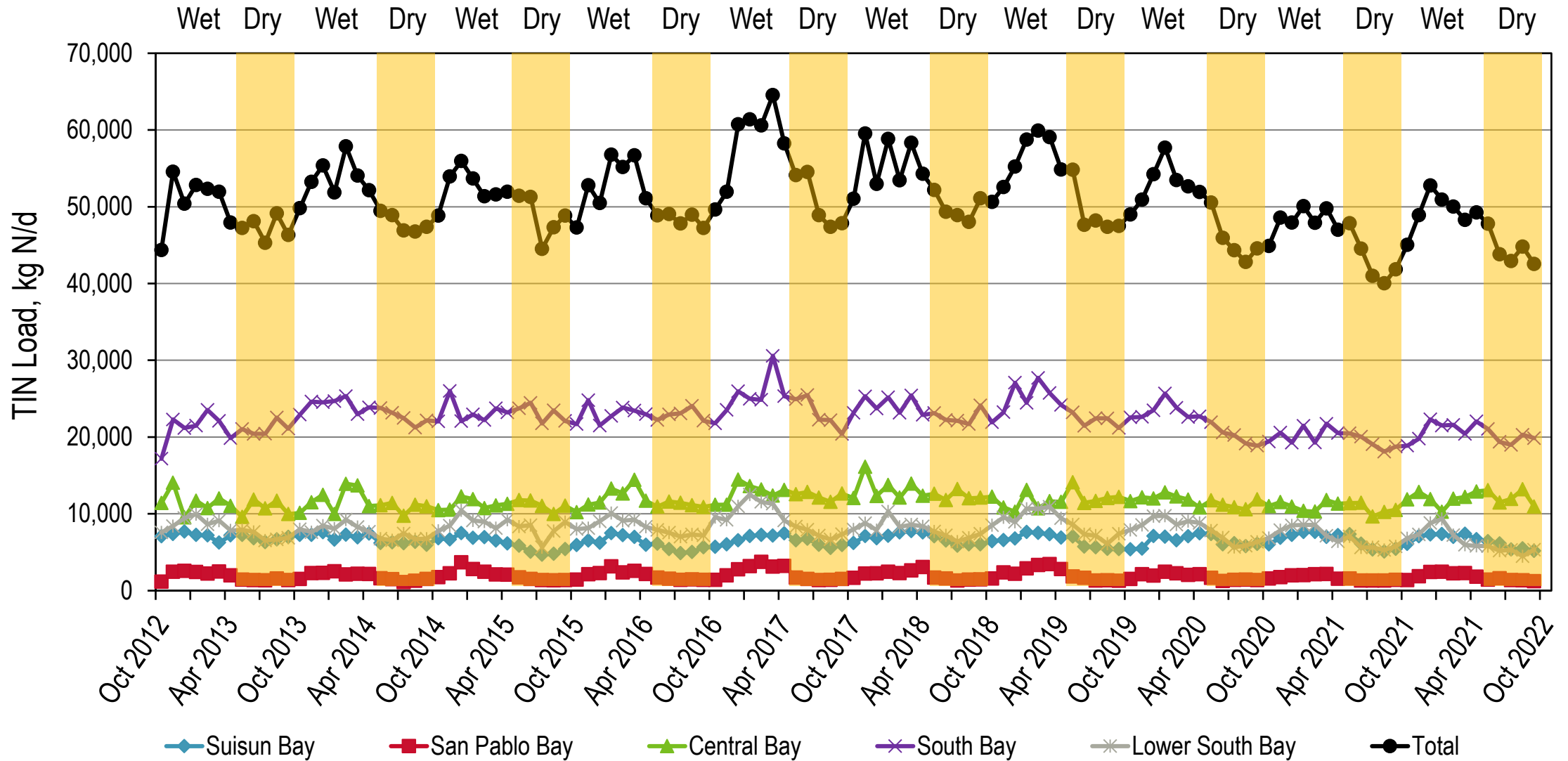
# 2022 Group Annual Report (Submitted 11/2023): Flow

- This past wet season had nearly as much precipitation as the prior two wet seasons (18.6 inches versus 20.5 inches, respectively)
- Average Dry season (May 1 – Sept 30) flows lowest since sampling began in 2012



# 2022 Group Annual Report (Submitted 11/2023): Total Inorganic Nitrogen (TIN)

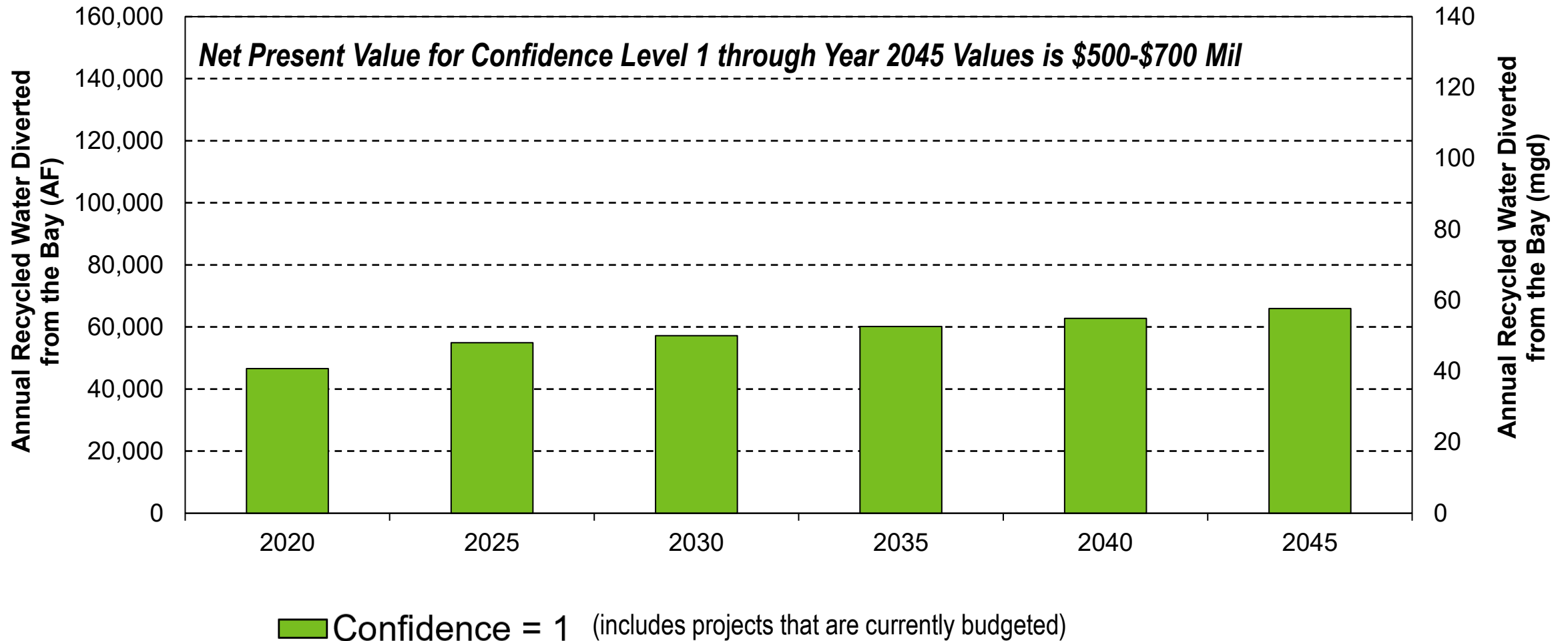
The dry season average monthly loads are ~7 percent less than the 10-year average





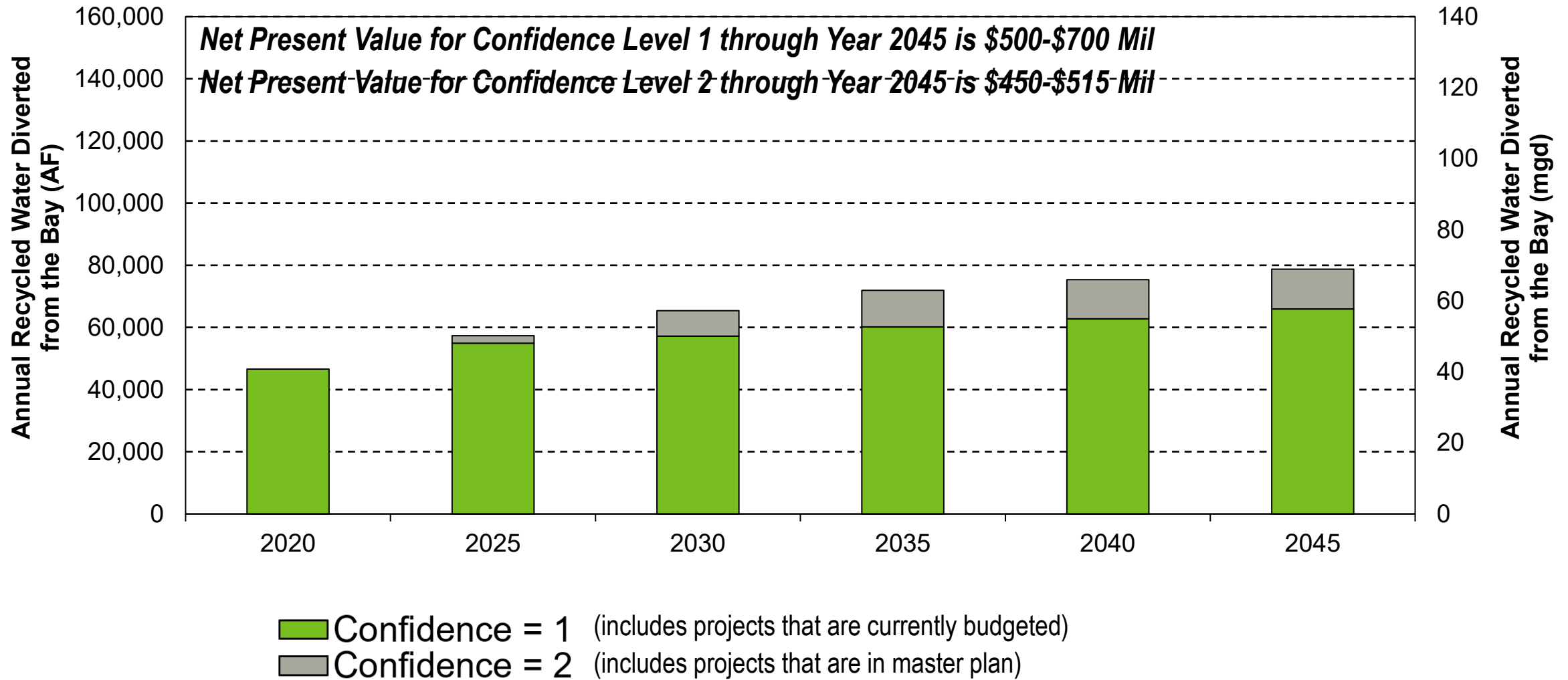
# **Draft 2<sup>nd</sup> Watershed Permit Findings (Recycled Water DRAFT Findings)**

# DRAFT Recycled Water Flows Diverted from Bay Projected into the Future (Year-Round)



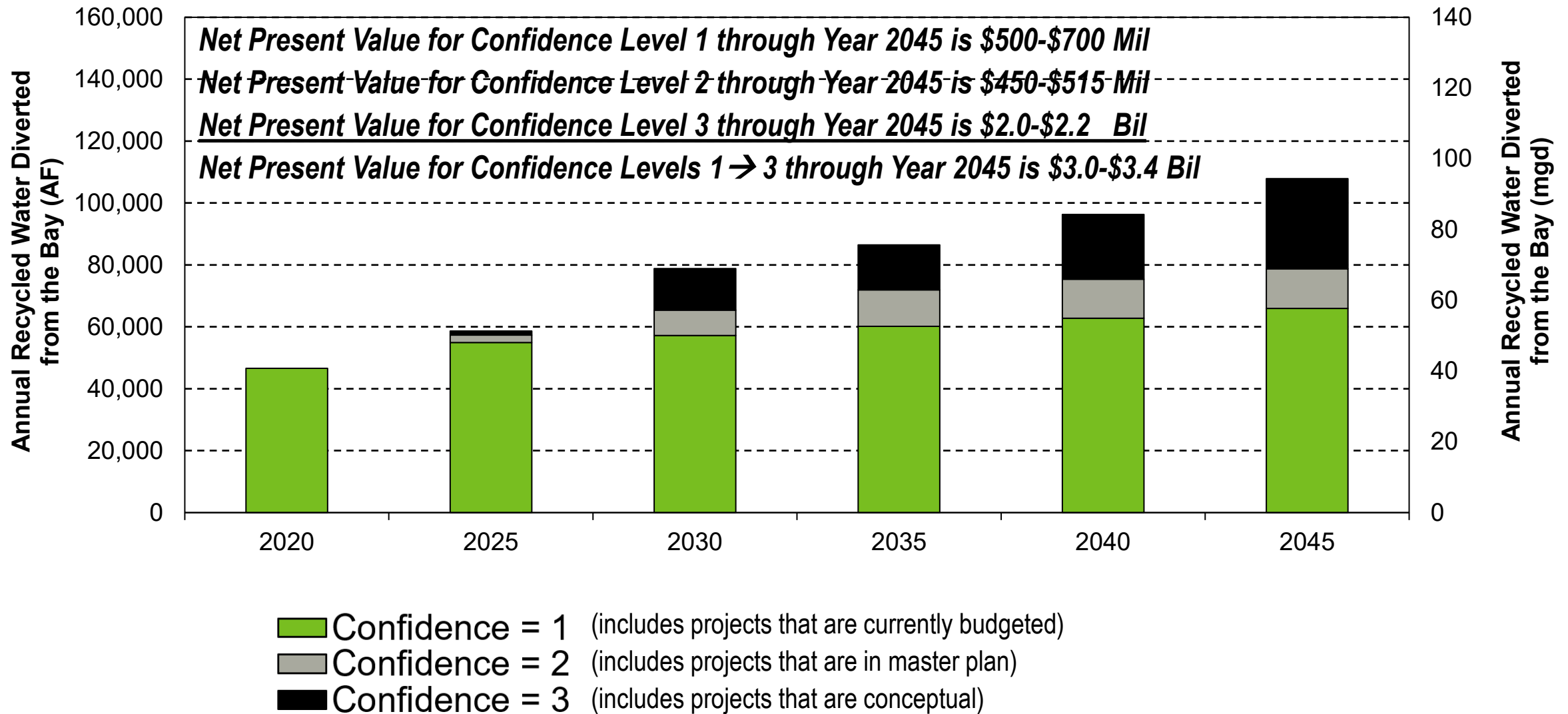
For Perspective: the Current Discharge Flows to the Bay are Approximately 400 mgd (about 9% of Effluent is Currently Recycled)

# DRAFT Recycled Water Flows Diverted from Bay Projected into the Future (Year-Round)



For Perspective: the Current Discharge Flows to the Bay are Approximately 400 mgd (about 9% of Effluent is Currently Recycled)

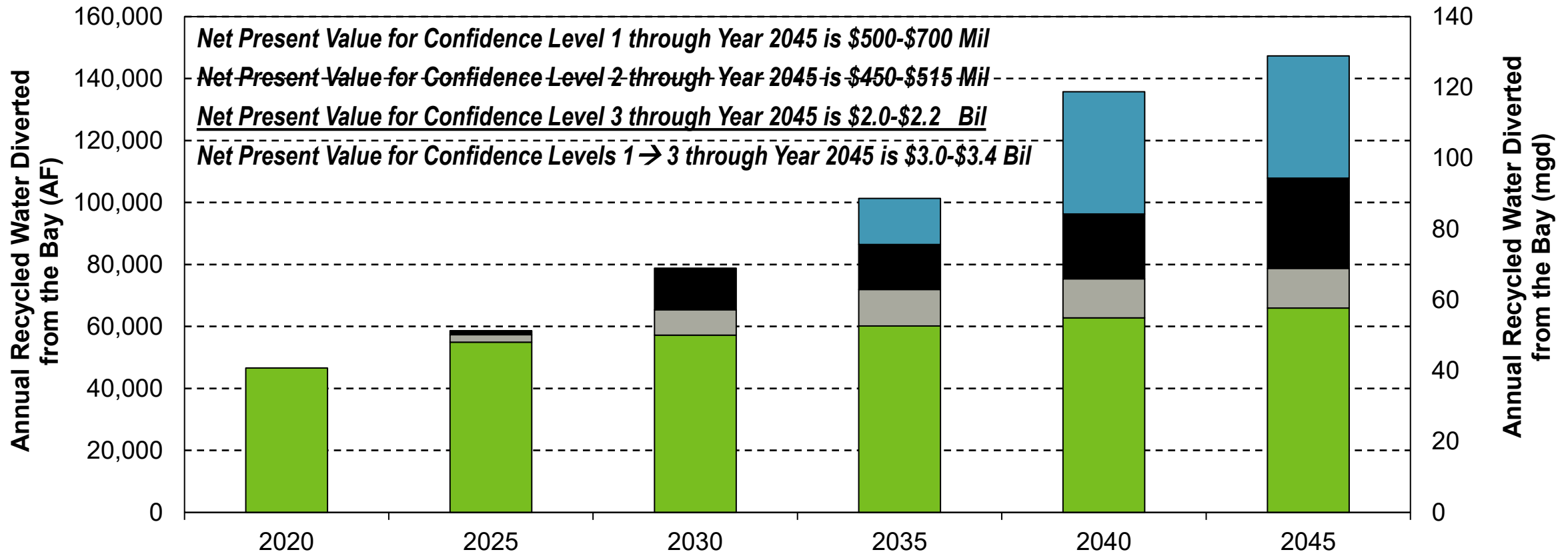
# DRAFT Recycled Water Flows Diverted from Bay Projected into the Future (Year-Round)



For Perspective: the Current Discharge Flows to the Bay are Approximately 400 mgd (about 9% of Effluent is Currently Recycled)



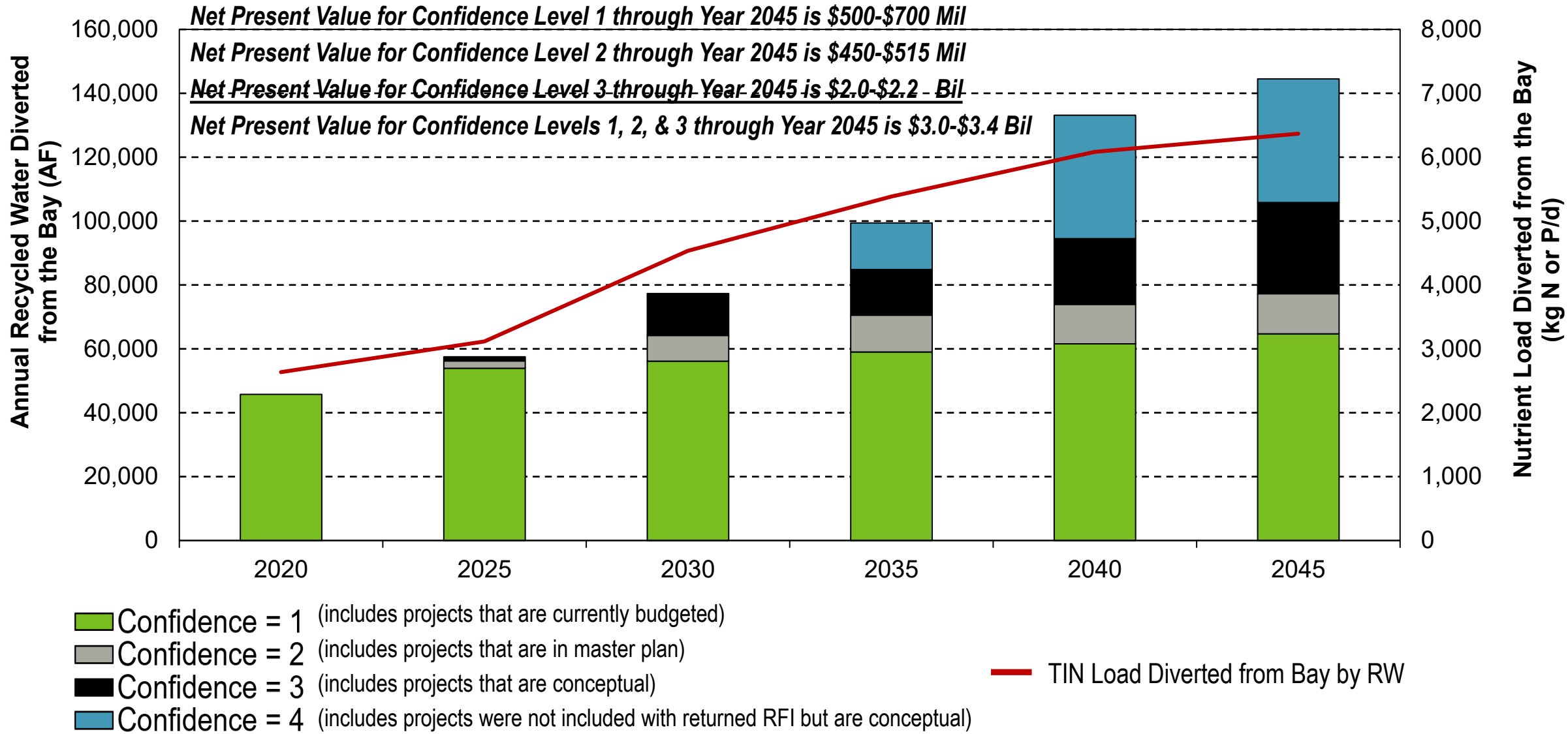
# DRAFT Recycled Water Flows Diverted from Bay Projected into the Future (Year-Round)



- Confidence = 1 (includes projects that are currently budgeted)
- Confidence = 2 (includes projects that are in master plan)
- Confidence = 3 (includes projects that are conceptual)
- Confidence = 4 (includes projects not included with returned RFI but are conceptual)

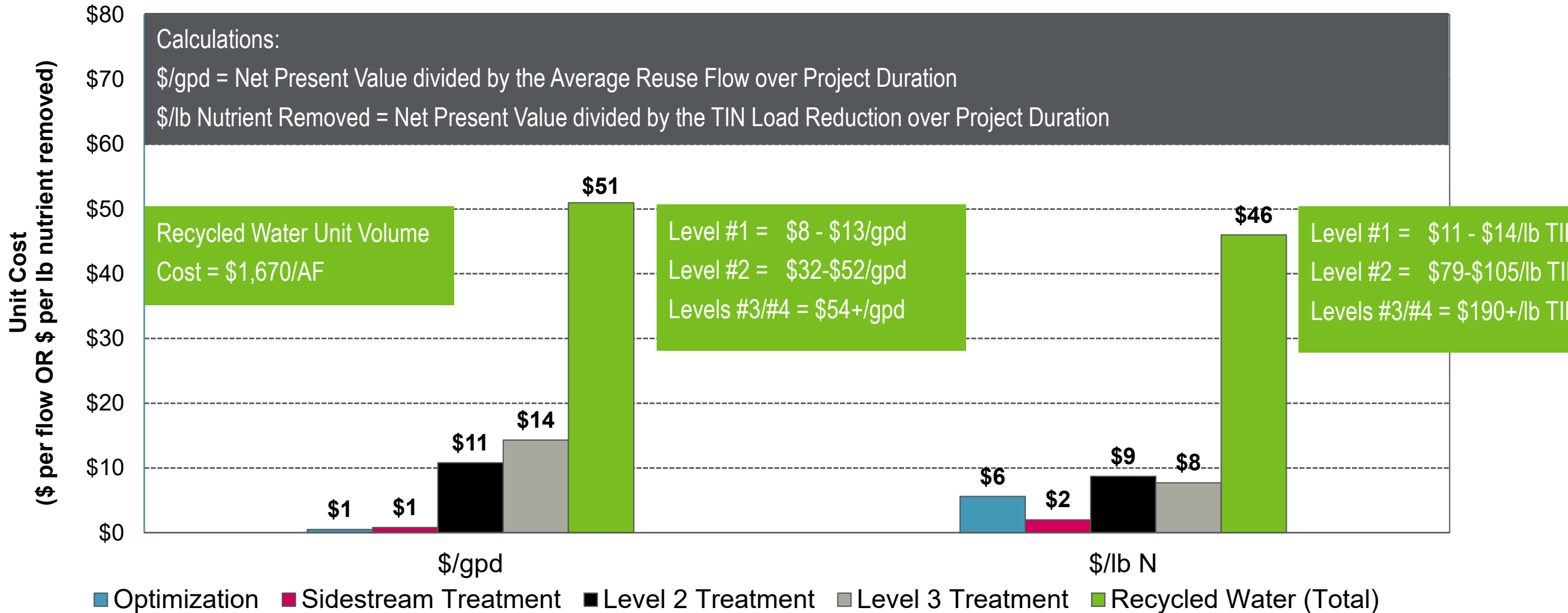
For Perspective: the Current Discharge Flows to the Bay are Approximately 400 mgd (about 9% of Effluent is Currently Recycled)

# DRAFT Recycled Water Flows Diverted from Bay Projected into the Future (Year-Round)



For Perspective: the Current Discharge TIN Loads to the Bay are Approximately 44,000 kg N/d (about 6% of Effluent TIN is Currently Recycled)

# DRAFT Recycled Water Costs against Nutrient Reduction Costs by Treatment Strategies (Year-Round)



# Schedule

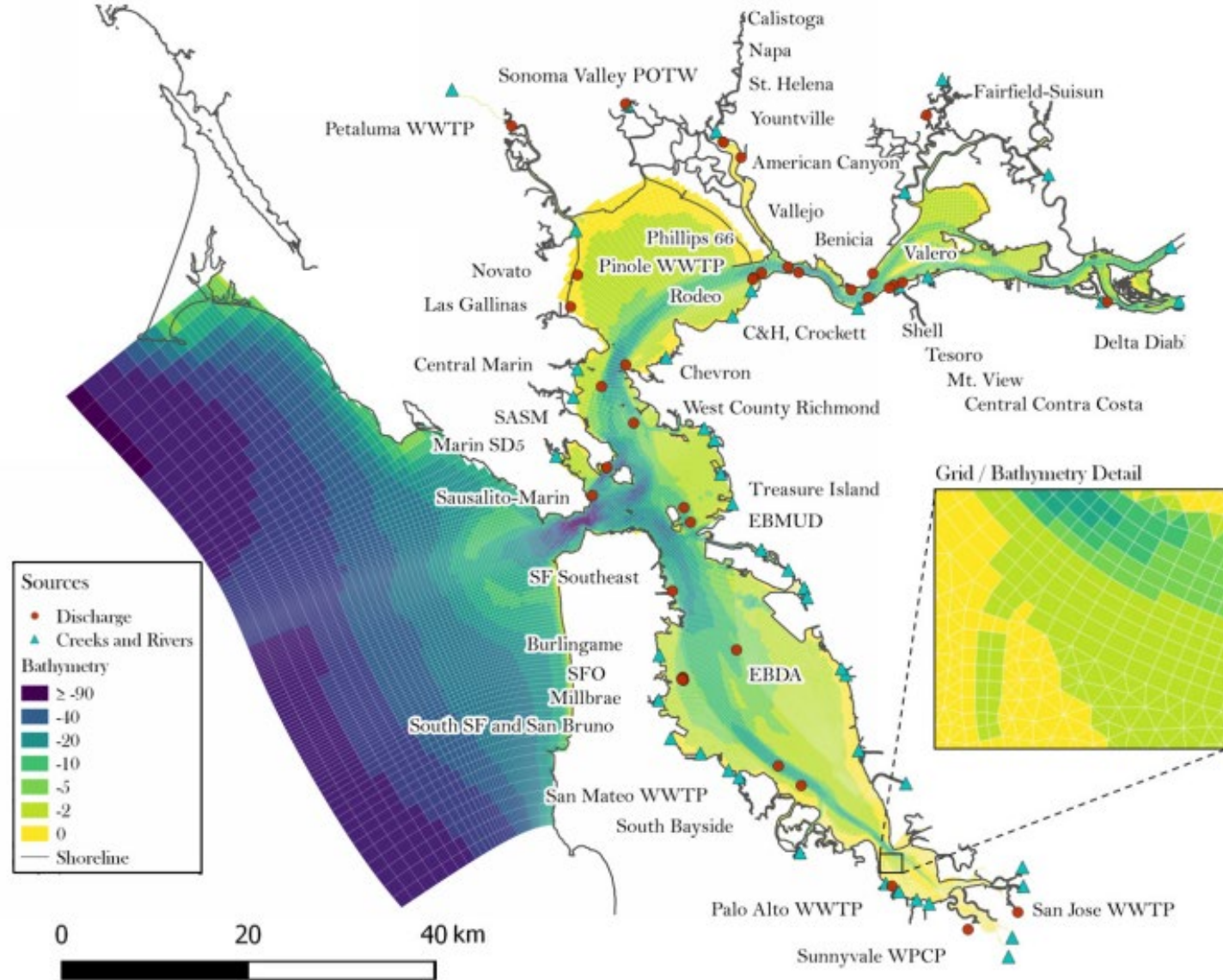
- Individual Plant Reports:  
Address Comments and Finalized by mid-May 2023
- Overall Report:
  - Distribute Week of 5/10
  - Receive Comments by 5/26
  - Finalize by 6/8
  - Send out Sign-Off Forms by 6/9 (2+ weeks to sign)

## Contact Info:

Mike Falk

[mike.falk@hdrinc.com](mailto:mike.falk@hdrinc.com)

916.517.9012



*Baywide Model Developed by SFEI for Advancing the Science*



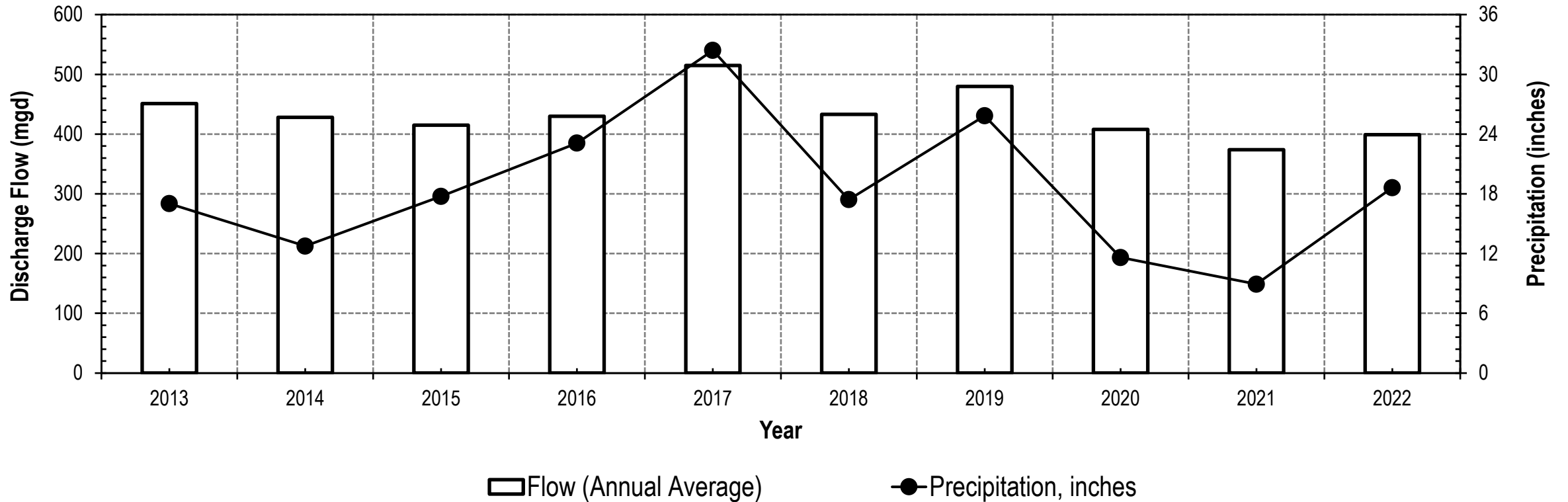
# **BACWA Annual Meeting: Group Annual Report & Recycled Water DRAFT Results**

**May 5, 2023**



**BACWA  
BAY AREA  
CLEAN WATER  
AGENCIES**

# Precipitation versus Discharge Flow



## Flows for 2021/2022:

- Precipitation Source: <https://ggweather.com/sf/monthly.html>
- 10/21-09/22 wet season was nearly as wet as previous two wet seasons (10/19-09/21)

# DRAFT Total Recycled Water Volumes Projected into the Future (Year-Round; Excludes Confidence Level 4)

