



**B A C W A**  
**B A Y A R E A**  
**C L E A N W A T E R**  
**A G E N C I E S**

---

# **Hot Topics**

## **Collection Systems Updates**



# Collection Systems Updates

## Regulations

STATEWIDE SANITARY SEWER SYSTEMS GENERAL ORDER 2022-

### ATTACHMENT E2 – SUMMARY OF NOTIFICATION, MONITORING REQUIREMENTS

This Attachment provides a summary of notification, monitoring and reporting requirements for Category 1, 2, and 3 spills, and for Enrollee-owned and/or operated laterals as required by this General Order, for quick reference purposes only.

Table E2-1

#### Spill Category 1: Spills to Surface Waters

Spill Requirement	Due
Notification	<b>Within two (2) hours</b> of the Enrollee's knowledge of a Category 1 spill of 1,000 gallons or greater, discharging or threatening to discharge to surface waters:  Notify the California Office of Emergency Services and obtain a notification control number.

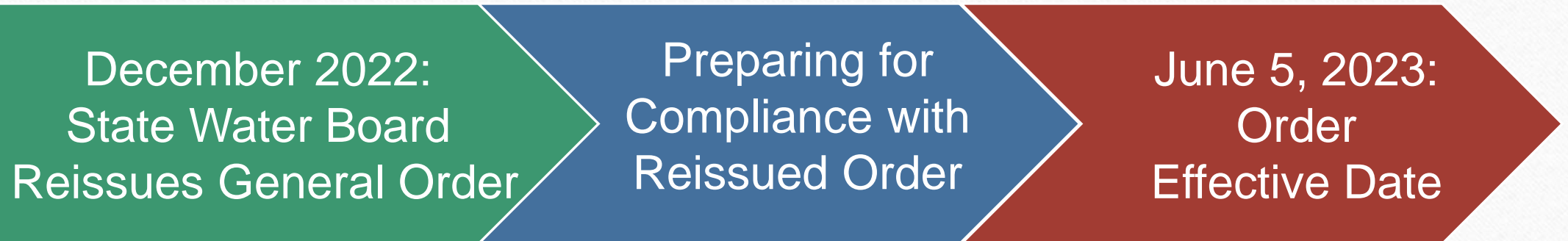
## Agency Impacts



Credit: City of San Mateo

# Sanitary Sewer Systems General Order Reissuance

---





# Sanitary Sewer Systems General Order Reissuance

---

- Prohibits discharge to **groundwater**
- Prohibits **potential** sewage discharge to surface water unless cleaned up, reported
- Strengthened qualifications for **Legally Responsible Officials**
- Requirements to address system-specific **climate change impacts**
- One-time submittal of electronic service area **boundary map**
- Annual submittal of CIWQS-generated system **performance graphs**
- **Shorter timeframe** for water quality sampling of large spills to surface water
- Reduced reporting for **smaller spills** (<50 gallons)

# Sanitary Sewer Systems General Order Reissuance

## 4 SIMPLE ACTIONS TO MAINTAIN COMPLIANCE!

1

**Certify Continuation  
of Coverage in  
CIWQS**

Videos and Guidance  
Document Available

2

**Designate a Legally  
Responsible Official**

- Management of entire system
- Authority over CIP recommendations

3

**Update Spill  
Emergency  
Response Plan**

New monitoring,  
reporting, and  
coordination  
requirements

4

**Upload  
Existing Sewer  
System  
Management  
Plan into  
CIWQS**

**By June 4, 2023**

# Sanitary Sewer Systems General Order Reissuance

December 2022:  
State Water Board  
Reissues General Order

Preparing for Compliance  
with Reissued Order

June 5, 2023:  
Order  
Effective Date

**2024+**  
**Annual Reports  
&  
New Audit Rules**

**2025+**  
**Boundary  
Maps**

**2025+**  
**New Sewer System  
Management Plan  
(SSMP) Requirements**

Coordination  
with other  
utility agencies

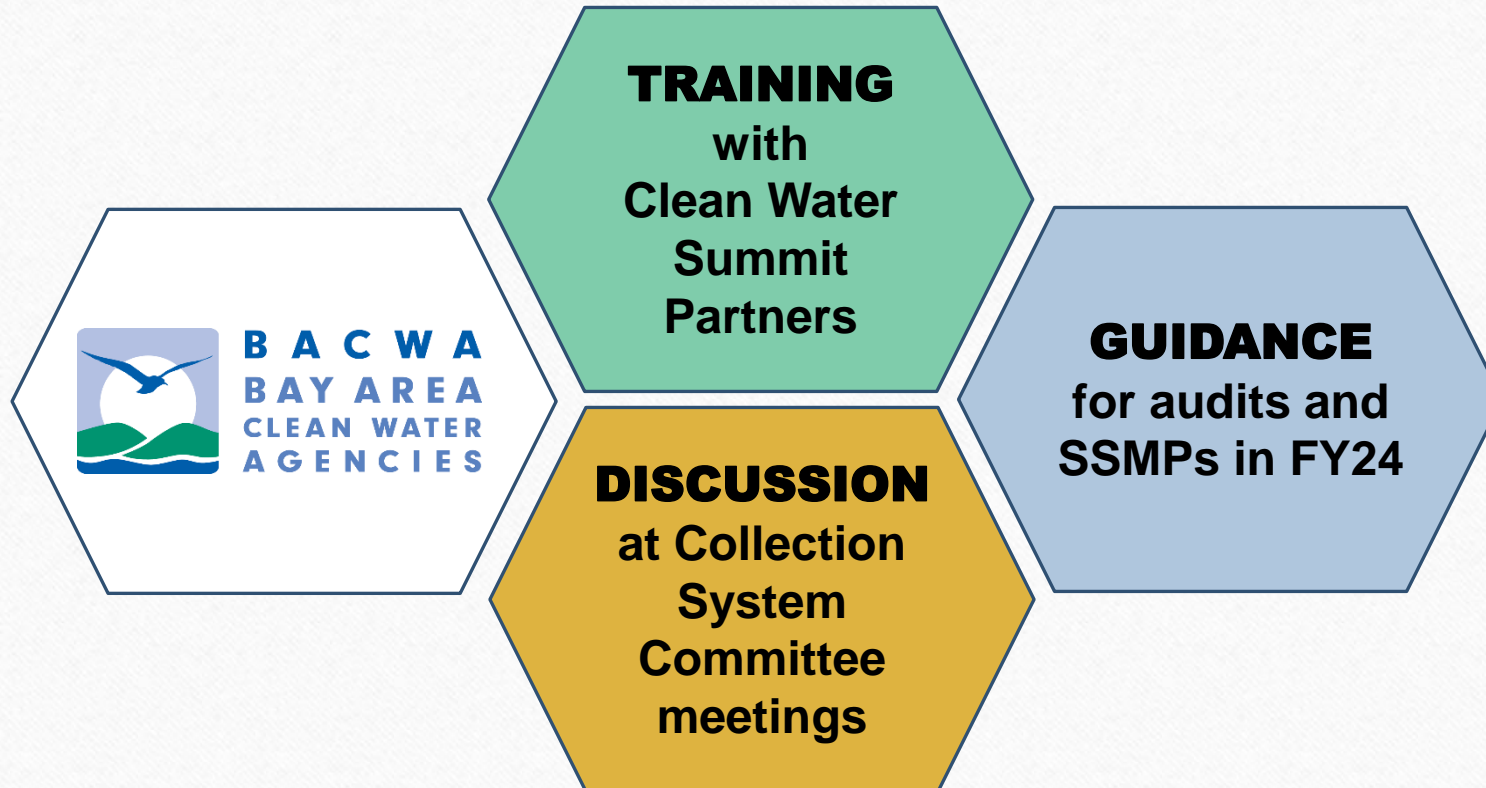
New  
prioritization  
requirements

Assess  
vulnerability to  
climate change



# Sanitary Sewer Systems General Order Reissuance

---



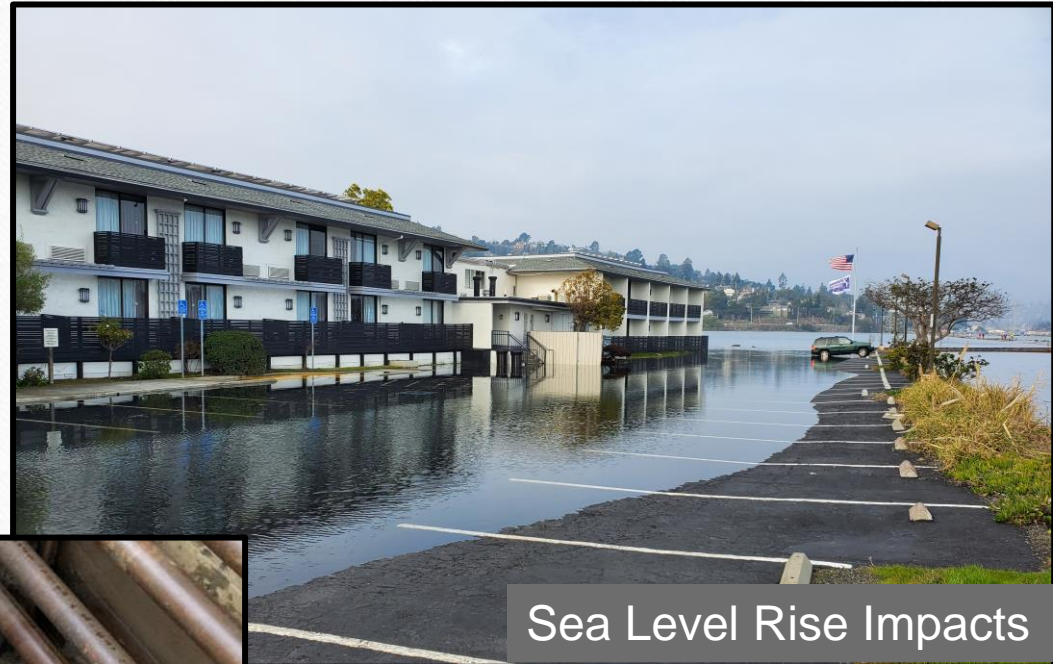


# Drought and Deluge



Recycled Water Impacts

*Credit: Bartlett Tree Experts*



Sea Level Rise Impacts

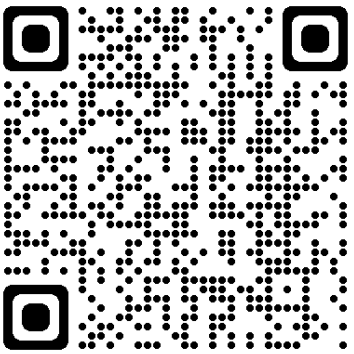
*Credit: Jim Jacobs*



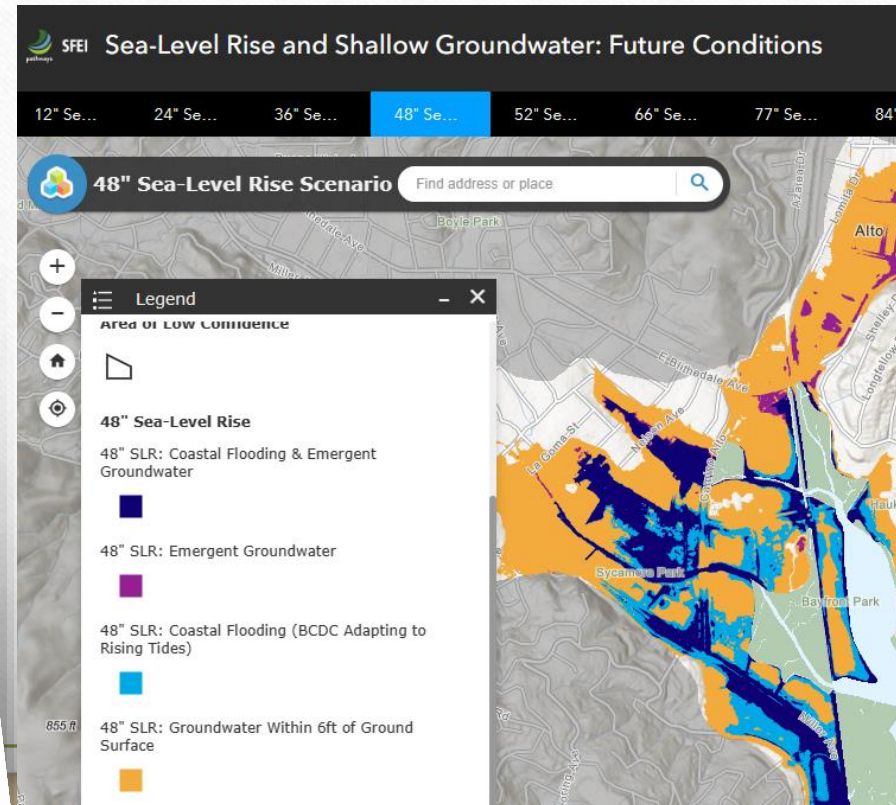
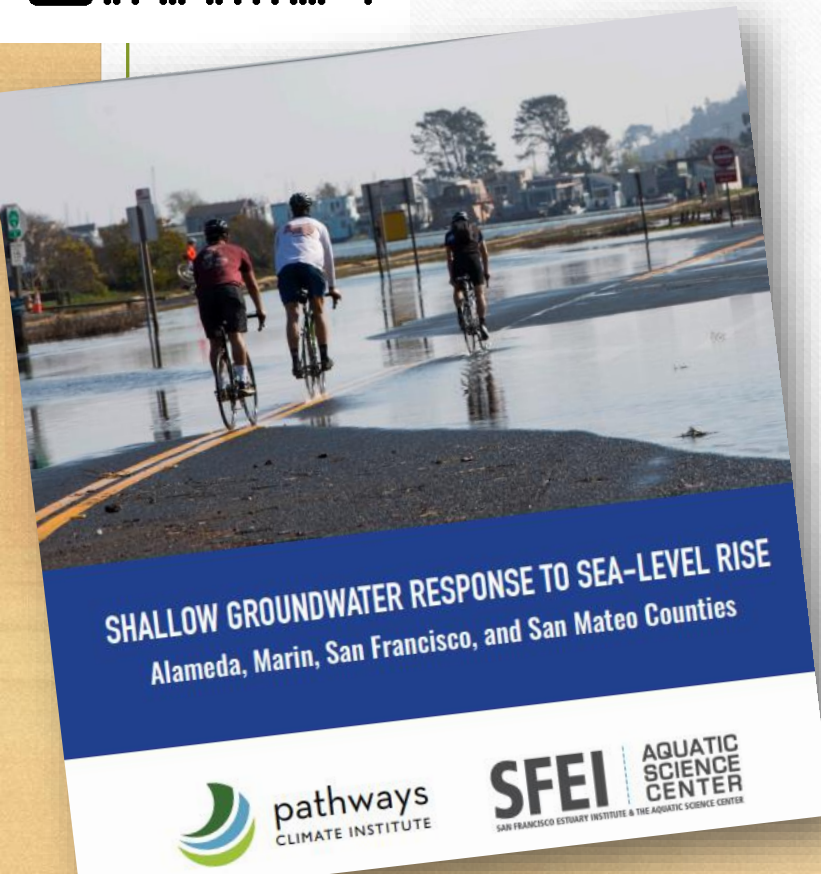
Corrosion Impacts

*Credit: EBMUD*





# Groundwater Level Rise



- Groundwater projections now available for Alameda, Marin, San Mateo, and San Francisco Counties

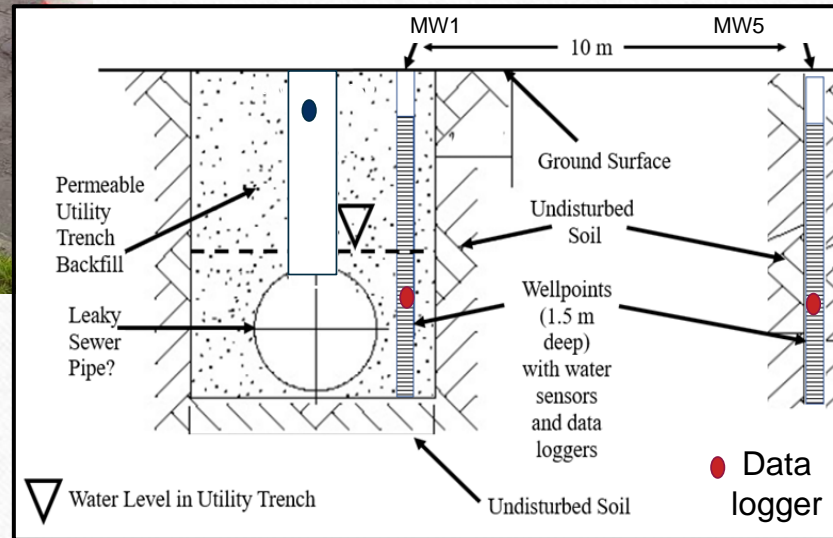


# Impacts on Collection Systems



Credit: Oro Loma SD

How will these factors combine?



Credit: Jim Jacobs

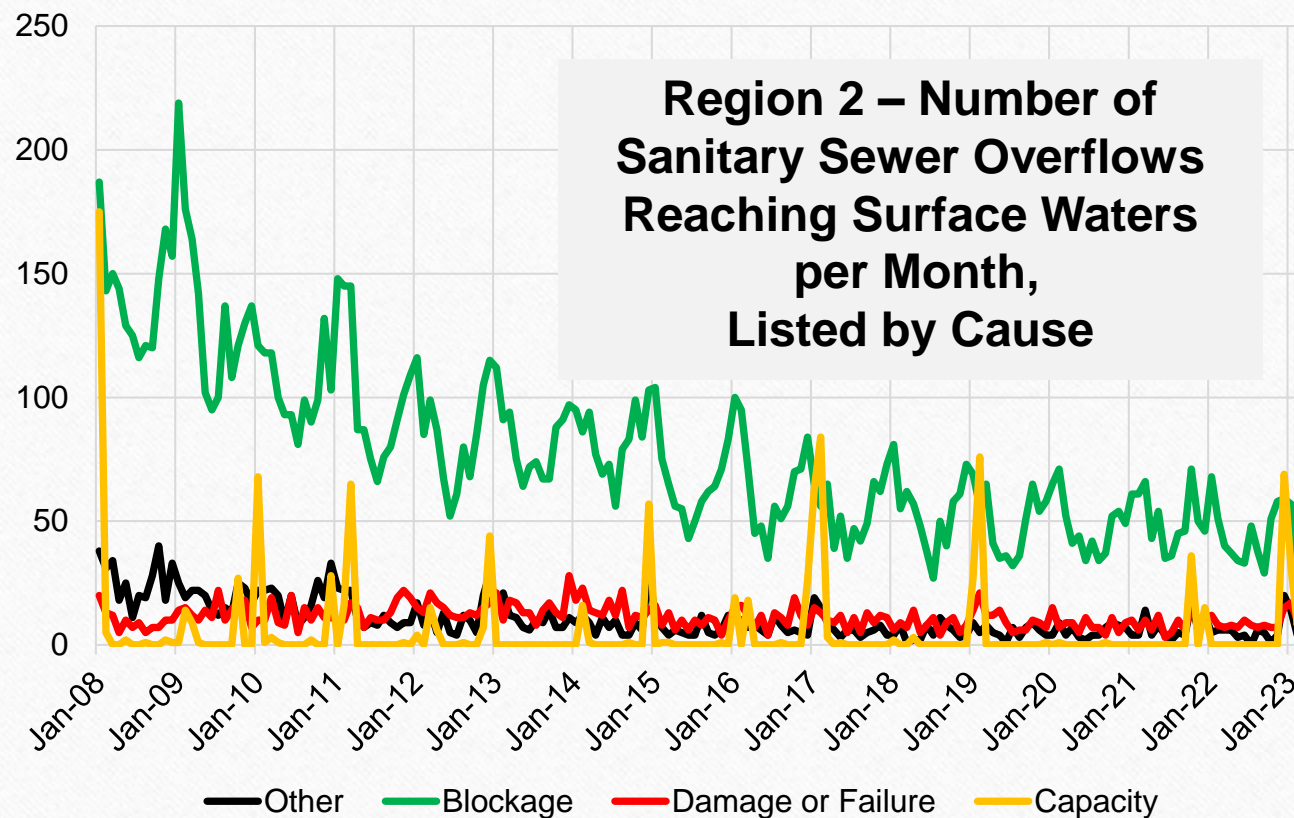
- Sea Level Rise
- Groundwater Level Rise
- Extreme Precipitation
- Complex Underground Utilities



# Sanitary Sewer Overflow Trends in Region 2



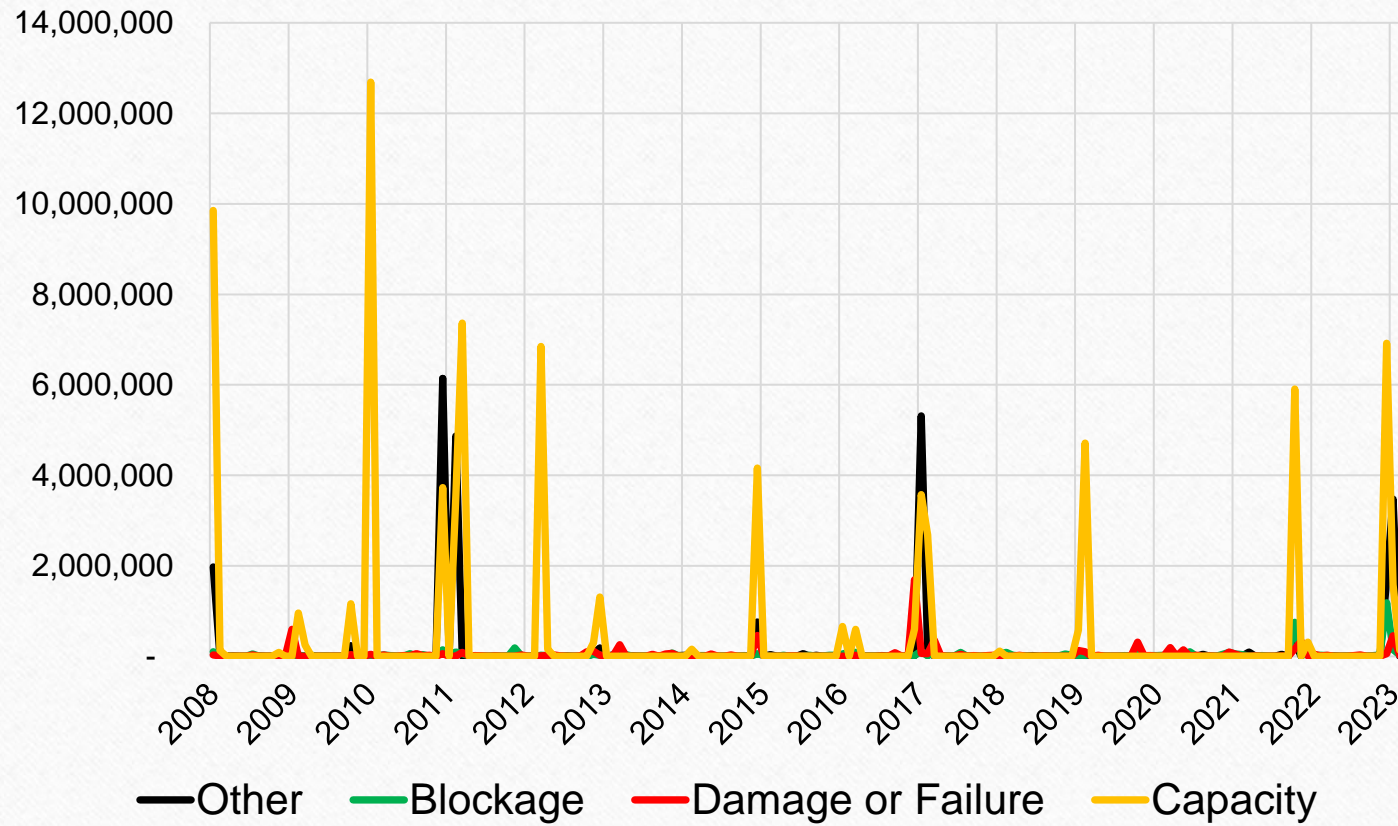
Credit: Central San



Source: CIWQS. Does not include Combined System Overflows.



## Region 2 - Sanitary Sewer Overflow Volume Reaching Surface Waters per Month (Gallons), Listed by Cause



Source: CIWQS. Does not include Combined System Overflows.

