

SFEI-ASC Board Meeting – June 15, 2013

Executive Directors Report

Introductions – New Staff

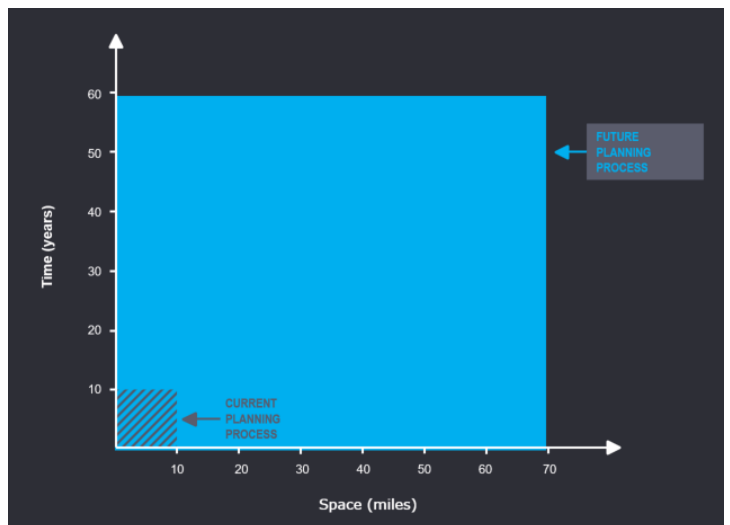
- Anna De Lopez – Operations Assistant
- Patrick Walsh – Director of Finance
- Stacy Cullison – Director of Development



Development - Our Development Committee, led by Jim Fiedler, has met many times to create a set of policies to establish a foundation for SFEI's development program. We've purchased, installed, adapted, and have begun to train on software to manage our fund raising outreach and cultivation program. We've retained an outside Foundation consultant with 14 years of experience representing science and business focused environmental NGOs in Northern CA. We're creating performance metrics to track our development progress.



Philanthropic Support for Climate Change - There is great potential for private philanthropy to support big, bold SFEI efforts around climate change. Much of our work is limited to smaller geographic areas and shorter time windows. To tackle Climate Change, SFEI must address much larger regional landscapes and longer time frames in decades (per the chart to the right). SFEI has earned an excellent reputation for first class, objective science and for convening key leaders from all sectors of the community. We can build on the foundation of our current work, and target private philanthropy to support big, bold projects.



Draft Strategic Plan - Staff has worked with the Executive Committee to substantially update our 2011 SFEI-ASC Strategic Plan. This Draft Update builds on our core strengths and values. It presents our vision, mission and goals to an outside audience, essential to the success and financial stability of SFEI. This Update reflects considerable work and input from staff and the Executive Committee. We want to hear the Board's initial thoughts and comments. Staff will then work with the Exec. Committee another draft for review by the full Board.



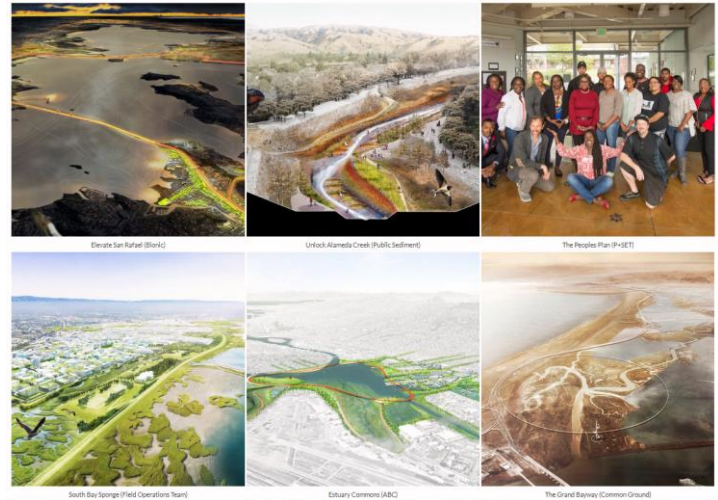
Electric Car Chargers – On a more immediate level, we secured grant from the Bay Area Air Quality District, to partially fund SFEI's installation of a set of Solar Powered Electric Car Charging stations at the front of our offices. These will serve staff and future visitors to SFEI



Resilient by Design Challenge – Two grants totaling \$175k, from the Santa Clara Valley Water District, have allowed SFEI to provide science support to the overall Resilient by Design Challenge, including co-authorship of a design brief. It also funded our science support to each of the nine teams and their collaboration with local communities. The final projects offered a vision for future shoreline community-based plans to address the challenges of climate change and sea level rise.



Nine Resilient by Design Projects – Each of the nine community projects addressed a set of unique urban and ecological conditions. While we had no control over the final design of any project, SFEI’s consulting was able to greatly improve the ecological focus of most of them.



SCIENCE ADVISORY TEAM



The Science Advisory Team met regularly with each Design Team, contributed to the Briefing Book, provided online access to data through the Resilience Atlas, and presented a two-hour science briefing at the Exploratorium at the start of the research phase. Through these activities, the Team helped incorporate local scientific knowledge and datasets, identified ecosystem restoration and adaptation opportunities, and maximized alignment with current environmental management efforts. The Team also provided review and comment on each of the draft design concepts. The Science Advisory Team draws on the scientists of the San Francisco Estuary Institute and is made possible by support from the Santa Clara Valley Water District.



Specific RBD Projects – With Water District funding, we’re continuing to work with several of these design groups to help them further advance their strategies including this South Bay project that is focused on bold, shoreline solutions at the edge of Silicon Valley.




[illegible]

Operational Landscape Units:
Using nature's jurisdictions to plan for
sea level rise

A landscape photograph showing a winding waterway, possibly a tidal creek or estuary, flowing through a marshy area. The water is calm and reflects the sky. The marsh is covered in dense, low-lying vegetation in shades of green and brown. In the background, there are rolling hills or mountains under a clear blue sky. The overall scene suggests a natural, coastal environment.

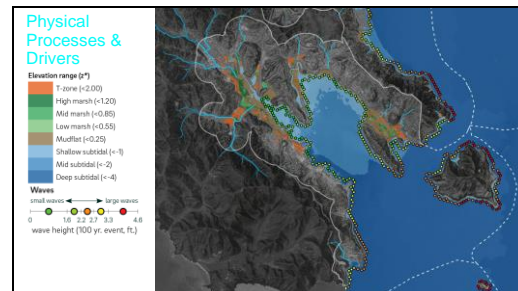
30 Bay Area Watersheds - We're assessing the ecological conditions of 30 watersheds in the S.F. Bay Area.



SF Bay OLUs

- Funded by the SF Bay Regional Water Quality Control Board
- Partnering with SPUR
- Piloting approach in San Mateo and Marin counties, and SR 37

OLU Pilot Projects - Pilot projects in collaboration with Marin and San Mateo Counties will produce a set of science-based strategies to address local planning principles to respond to sea level rise and lowland flooding issues. Continued support from the Regional Board in 2019 is expected to enable SFEI to begin a Phase II implementation effort.



Governor's Climate Action Summit - Our OLU work is recognized by the Governor's office and will be highlighted during his September Global Climate Action Summit. Out of 600 proposals, SFEI's project was selected for a presentation during a summit affiliate event. We continue to work with the administration to suggest a higher profile for our project at this international event.



GLOBAL CLIMATE ACTION SUMMIT

AFFILIATE EVENTS



GreenPlan-IT - We've completed development of Phase I of our GreenPlan-IT program -- a toolset to empower municipalities to plan, assess, track, and report their green infrastructure investments. This helps restore the water cycle and improve filtration of water quality contaminants. We recently worked with Richmond, Oakland, Sunnyvale, and Contra Costa to meet their green infrastructure planning and reporting needs, while also providing needed enhancements to the toolset in response to user feedback.



EcoAtlas Funding - EcoAtlas is one of our many data base and mapping tool toolsets that support many SFEI projects and the state's various water policy programs. Many agencies use and require permittees to use these tools. Yet, securing funds for ongoing operations, maintenance and training remains a challenge. The Environmental Informatics program has recently presented a Business plan to the Strategic Growth Council, and several other state bodies in an effort to secure some long term support for these important tools.



Highway 37 & Wetlands Restoration - Highway 37 is a 21-mile roadway spanning the northern arc of San Pablo Bay and connecting the counties of Solano, Napa, Sonoma, and Marin. The increased frequency of flooding of this important corridor offers a rare opportunity to consider design options that also help to restore much of the natural wetland systems in this area. SFEI is now working with a growing coalition of NGO, local government and transportation agencies to develop options that meet ambitious ecological restoration goals while also improving the transportation security and reliability in this region.



Delta RMP: For several years, SFEI has worked with the Central Valley Regional Water Board to design and implement a Delta Regional Monitoring Program. This RMP has conducted monitoring and special studies in the Delta covering:

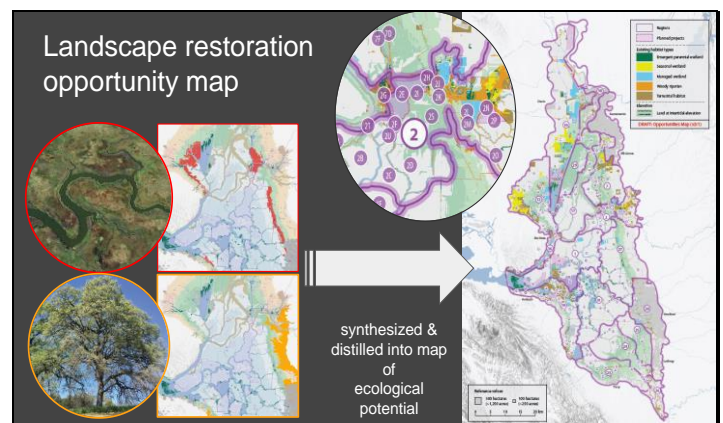
- **Pesticides** and toxicity
- **Nutrients** (*nitrogen and phosphorus*)
- **Mercury** in fish, water and sediment
- **Pathogens** that can cause human illnesses



Delta Ecological Mapping – SFEI has built on our Resilient Landscape Program’ three-volume Delta study to meet several state policy needs. We are now providing extensive ecological mapping to support the Delta Stewardship Council’s ***Delta Plan Ecosystem Amendment***. Our work is providing an ecological vision on how to restore the delta (based on our Delta Renewed report).



Landscape Restoration Map - We’ve also been invited to become science advisors to negotiations and settlement talks between state agencies, water exporters and environmental groups, on the future of Delta restoration priorities. Our analysis and mapping efforts are providing these parties with options to get the biggest ecological benefit, in the most cost effective manner, with the smallest land footprint.



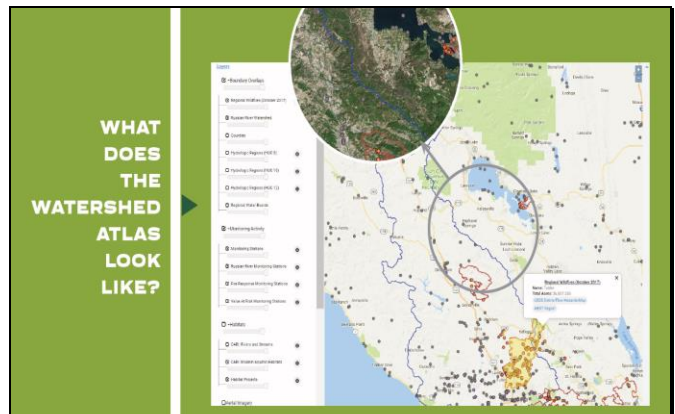
Wetlands RMP - With EPA funds, SFEI established a multi-agency steering committee and a science advisory team that has met twice. We're creating core elements of a regional program to assess the performance of SF Bay wetlands programs and projects. The next three months of this effort will develop regulatory management questions for bay wetlands and watersheds that the program will address.



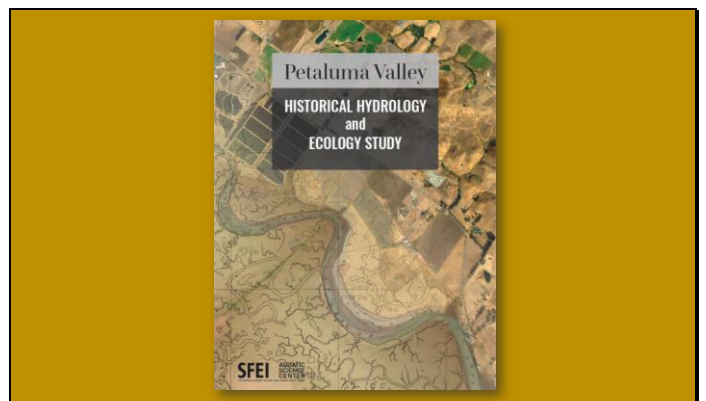
Russian River – SFEI has begun two major efforts:

1- Regional Monitoring Program - A collaboration of Russian River water agencies have launched a steering committee to draft management questions for a watershed RMP effort. We've created work groups focused on stormwater management, fire response and recovery and the use of EcoAtlas to track status and trends.

2- North coast Fire Recovery - We will also implement an EcoAtlas data base and mapping effort to support N. CA environmental fire response and recovery efforts. This is a collaboration between USGS, the Regional Waterboard, multiple agencies NGOs and tribes.



Petaluma Historical Ecology - SFEI recently presented the findings of our collaboration with the Sonoma County Resource Conservation District. Our Historical Ecology Study of the Petaluma River Watershed will provide a foundation for future efforts by government, NGO and private sector leaders to plan and implement environmental restoration and protection priorities along the Petaluma River watershed.



Regional Sediment Strategy - We are developing a science-based regional sediment strategy to address S.F. Bay wetlands resilience and Bay water quality. SFEI will assess projected bayland sediment demand, sediment supply, and long-term resilience. We'll develop scenarios to integrate climate change projections with expected restoration and land-use change. The effort will project the minimum and maximum predicted sediment supply and demand to help managers to plan for the most extreme outcomes.

Finally, we'll also develop guidelines and a monitoring strategy to inform management of sediments for Bay shoreline resilience. The monitoring strategy will be developed in close partnership with the San Francisco Bay Regional Monitoring Program (RMP).

