

MARCH 16, 2018 – BACWA EXECUTIVE BOARD MEETING

## Air Quality, Climate Change, & Energy (ACE) Workgroup Update

Sarah A. Deslauriers, P.E., ENV SP  
Climate Change Program Manager



### SB 1383: Short-Lived Climate Pollutant (SLCP) Reduction Implementation

- Legislation requires:
  - 40% methane reduction by 2030 (relative to 2013 levels)
  - Organic waste diversion from landfills
    - 50% by 2020 (relative to 2014 levels)
    - 75% by 2025 (relative to 2014 levels)
  - CEC/CPUC to encourage/incentivize biogas production/use
- Informal rule-making:
  - Draft regulatory language released October 23<sup>rd</sup>
  - CASA comments submitted November 15<sup>th</sup>, ongoing discussions
  - Next draft of regulation: April
  - Next workshops: May 7<sup>th</sup> (Carlsbad) & 8<sup>th</sup> (Sacramento)



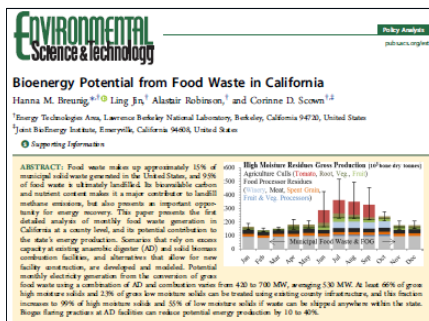
## SB 1383: Short-Lived Climate Pollutant (SLCP) Reduction Implementation

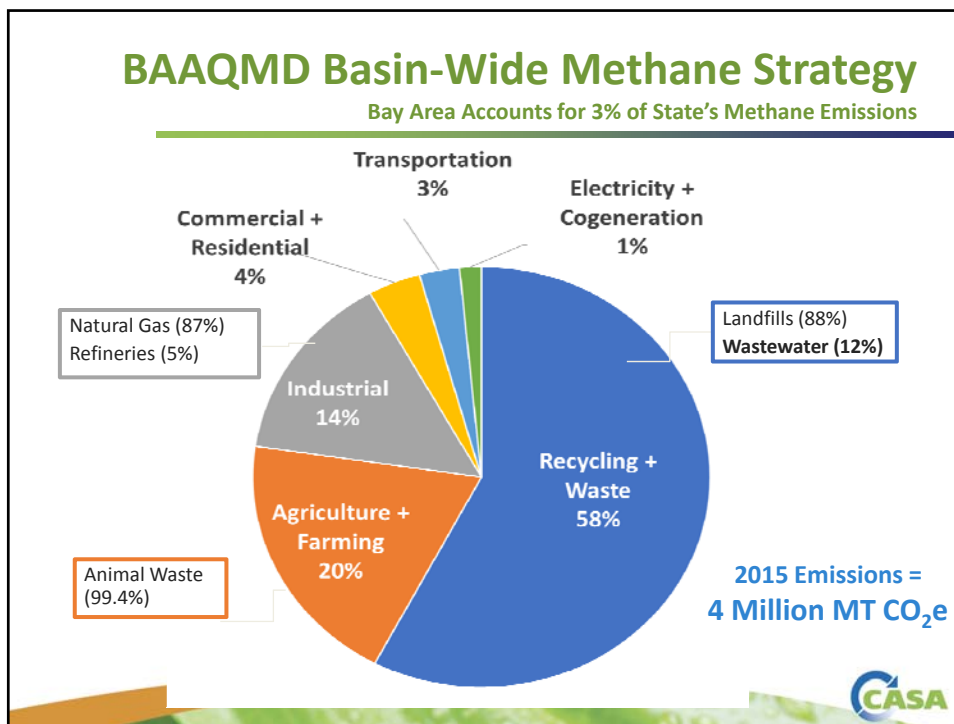
- Revised Draft Regulation is expected to address:
  - Accepting land application as a viable means of recycling
  - County Ordinances limiting land application
  
- Discussions of requiring procurement of biogas (in addition to SB 1122)
  - CPUC to consider revising heat content and siloxane requirements



## SWRCB: CA POTW Co-Digestion Capacity Analysis

- Purpose: *“Enable the **Water Board to work with wastewater agencies, local governments, community members and other stakeholders to inform approaches to better coordinate and cost-effectively maximize organic waste diversion from landfills, co-digestion at wastewater treatment plants, and beneficial biogas and biosolids utilization.**”*
- Analysis Tasks
  - Estimate organics generation for 2025 & 2030
  - Assess if existing facilities have capacity for 2025 & 2030
  - Assess methane emissions
  - Investigate opportunities and barriers at small- to medium- sized facilities
  - Examine pilots (already underway)
- To be complete by June 2019





## BAAQMD Basin-Wide Methane Strategy

Bay Area Accounts for 3% of State's Methane Emissions

### Scientific Findings

*Recent "top down" studies\**

- Emissions **1.3 – 2.3 times higher** than 2015 inventory
- Biological methane dominates** (82%) – primarily landfills

*Knowledge Gaps*

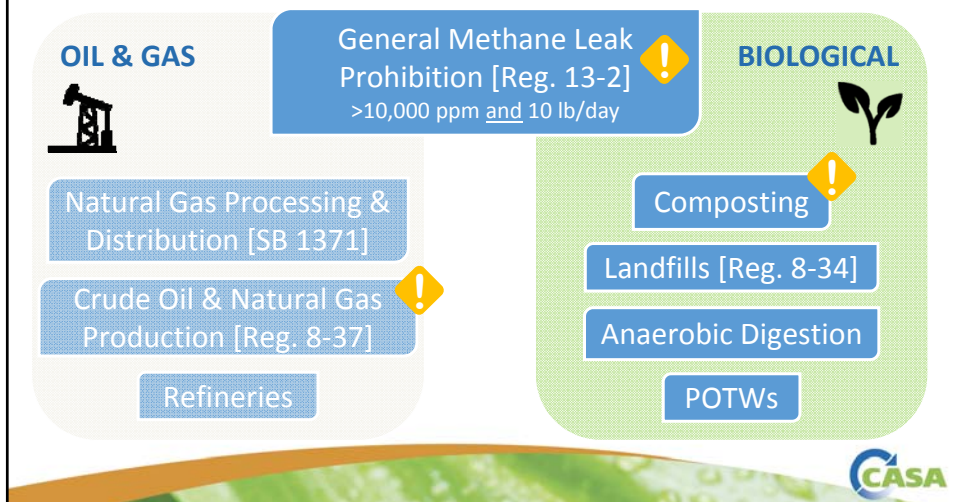
- Composting
- Anaerobic Digestion
- Refineries

### Further Research

- Aircraft Surveys with visible/infrared imaging spectrometer - JPL/CEC/ARB work
  - Additional funds from NASA for enhanced data analysis (2018)
  - Additional ground surveys by CARB
- Aircraft-based flux estimates with in situ measurements
- On-site leak detection (mobile van) and flux evaluation (infrared cameras)

## BAAQMD Basin-Wide Methane Strategy

### METHANE RULE DEVELOPMENT MAP



## BAAQMD Basin-Wide Methane Strategy

### 2018 Methane Rules

#### REG 13-2 SIGNIFICANT METHANE RELEASES

**PURPOSE** Allow the Air District to compel facilities to fix major leaks; will act as **backstop** while source-specific rules are adopted

**CONCEPT** Prohibits methane releases throughout District

**SCHEDULE**

WORKSHOPS  
APRIL 2018

TO BOARD  
JUNE 2018



#### NEW RULES COMPOSTING & ORGANIC WASTE OPERATIONS

**CONCEPT** Adopt a suite of rules that address emissions from storing, transferring and processing organic waste at composting, anaerobic digestion and other waste-related facilities such as landfills.

**SCHEDULE**  
(first rule)

WORKSHOPS  
JULY 2018

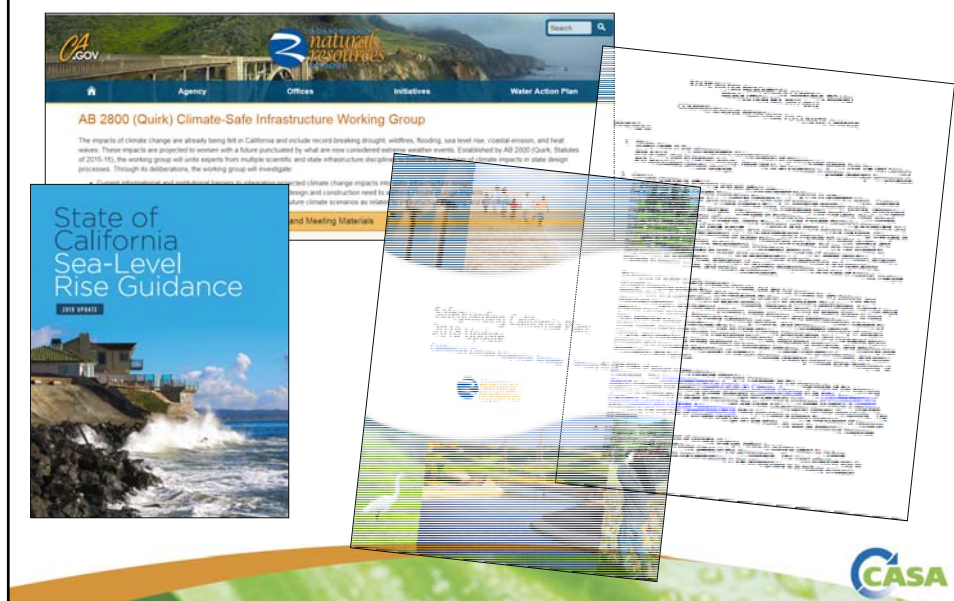
TO BOARD  
NOV 2018



16

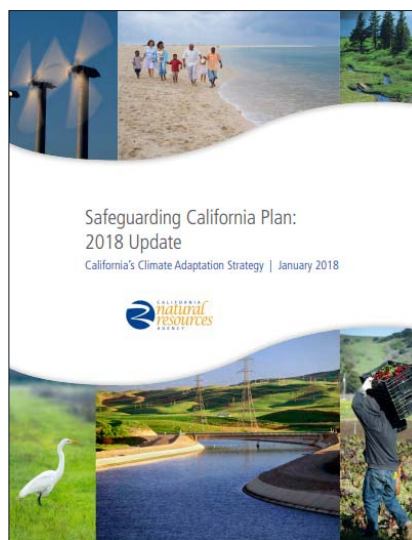


## State/regional initiatives looking at how CA will adapt to impacts of climate change



## CNRA's Safeguarding CA Plan

- Released: January 30<sup>th</sup>
- Lays out roadmap of what state agencies **are** doing and **will** do to protect communities, infrastructure, services, and the natural environment
- 69 recommendations across 11 sectors
- Over 1,000 ongoing actions/ next steps across 38 state agencies
- Invite from SWRCB to discuss how we can work together!



## SWRCB Climate Change Resolution

- Water Boards to “..promote water measures that mitigate GHG emissions and contribute to adaptation to effects of climate change..”
- Resolution contains 30 actions – two of which are:
  - Regional Water Boards to evaluate and **by July 1, 2018** make recommendations to the State Water Board on the need to modify permits and other regulatory requirements to reduce vulnerability of water/wastewater infrastructure to flooding, storm surge, & sea level rise.
  - **By July 1, 2018**, ...begin including climate change vulnerability assessments into community water system sanitary surveys, and shall encourage drinking water systems to use U.S. EPA’s Climate Resilience Evaluation and Awareness Tool (CREAT) or a comparable approach to identify vulnerabilities to climate change impacts.

*Talk to your Regional Board about their efforts*



## AB 2800: Climate-Safe Infrastructure Work Group

- Purpose:  
Examine how to integrate scientific data concerning projected climate change impacts into state infrastructure engineering, including oversight, investment, design, and construction.
- The working group will consider and investigate:
  - Informational and institutional barriers to integrating projected climate change impacts into design.
  - Critical design and construction information engineers need in order to address climate change impacts.
  - How to select an appropriate engineering design for a range of future climate scenarios as related to infrastructure planning and investment.





## AB 2800: Climate-Safe Infrastructure Work Group



- Webinar meeting focused on Water Sector, March 22:
  - John Andrew (DWR)
  - Kate White (U.S. ACE)
  - Amir Aghakouchak (UC-Irvine)



## Thank You!...Questions?

### Next Meeting:

Air Quality, Climate Change, & Energy (ACE)  
Workgroup  
April 26<sup>th</sup>, 1-3 pm (Webinar/Conference Call)

Sarah Deslauriers  
[sdeslauriers@Carollo.com](mailto:sdeslauriers@Carollo.com)  
925-705-6404

