





urban watershed management
SAN FRANCISCO PUBLIC UTILITIES COMMISSION



Reporting Back From Seattle:
Composting Toilets & Green Infrastructure at the Bullitt Center
Rosey Jencks – Wastewater Enterprise
BACWA Board Meeting - June 17, 2016



San Francisco
**Water
Power
Sewer**
Division of the San Francisco Public Utilities Commission



Agenda

- Bullitt Center
 - Living Building Challenge
 - Water & Sewer System Overview
- Green Infrastructure



BULLITT CENTER



LIVING BUILDING CHALLENGE REQUIREMENTS

Site

- Limits to Growth
- Urban Agriculture
- Habitat Exchange
- Human-Powered Living

Water

- **Net Positive Water**

Energy

- Net Positive Energy
- Health
- Civilized environment
- Healthy Interior Environment
- Biophilic Environment

Materials

- Red List
- Embodied Carbon Footprint
- Responsible Industry
- Living Economy Sourcing
- Net Positive Waste

Equity

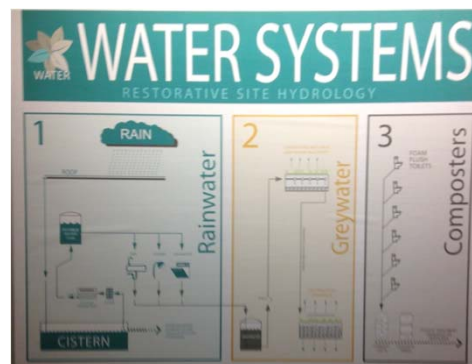
- Human Scale + Humane Places
- Universal Access to Nature + Place
- Equitable Investment
- JUST Organizations

Beauty

- Beauty + Spirit
- Inspiration + Education

WATER SYSTEMS

- *Nearly Waterless & Composting toilets for sewage*
- Stormwater & Rainwater harvesting for potable uses
- Greywater treatment for irrigation







- Composting Bins & Leachate Tank



- Stormwater & Rainwater harvesting for potable uses



San Francisco
**Water
Power
Sewer**

- Constructed rooftop wetland for irrigation



7 GREY WATER
wastewater cleaning

- Water used throughout the building is held in a greywater tank and then pumped to the constructed wetland.
- It is then either sent back to the earth or to the

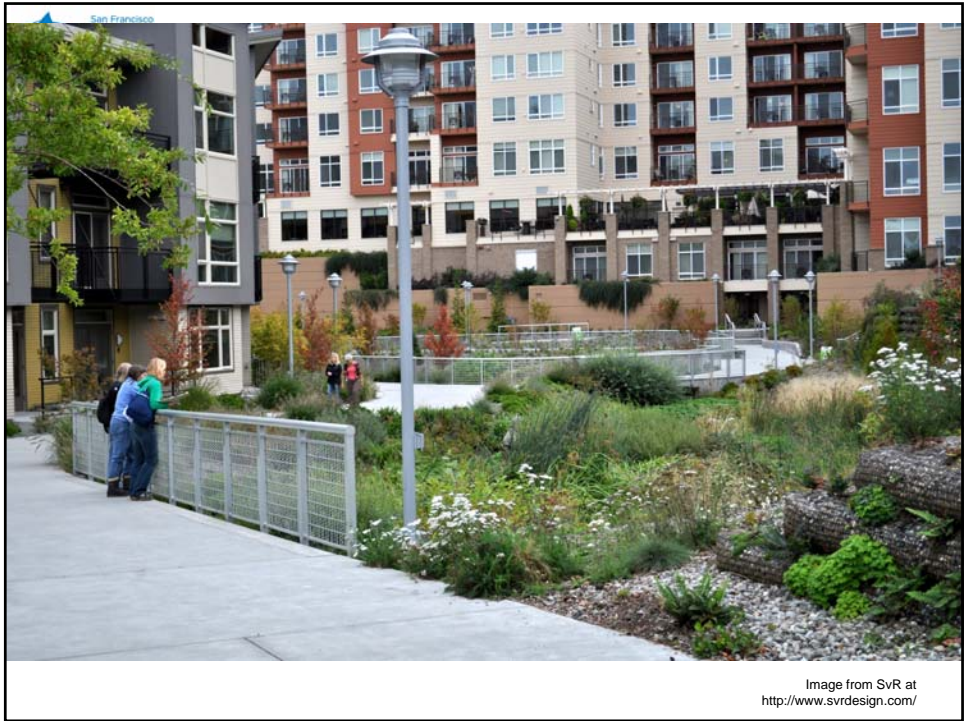
San Francisco
**Water
Power
Sewer**

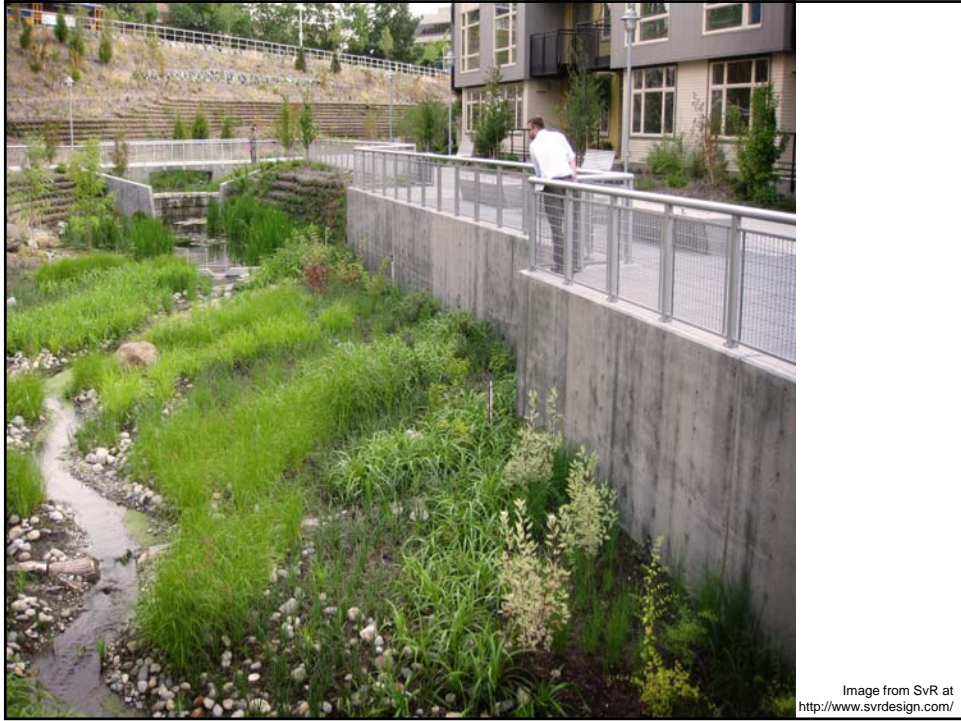
GREEN INFRASTRUCTURE

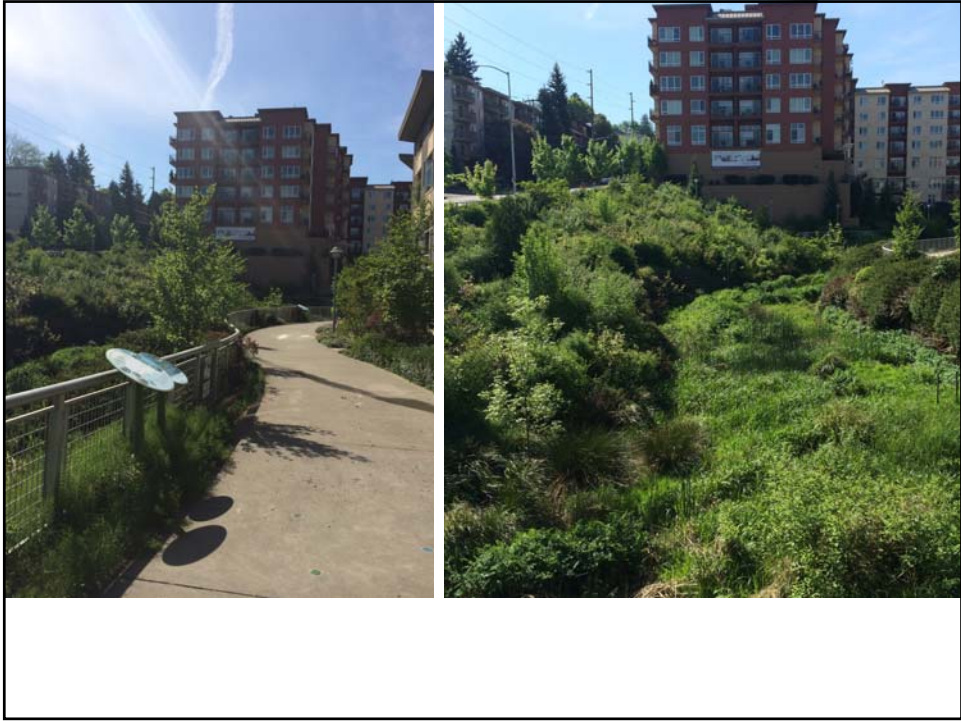


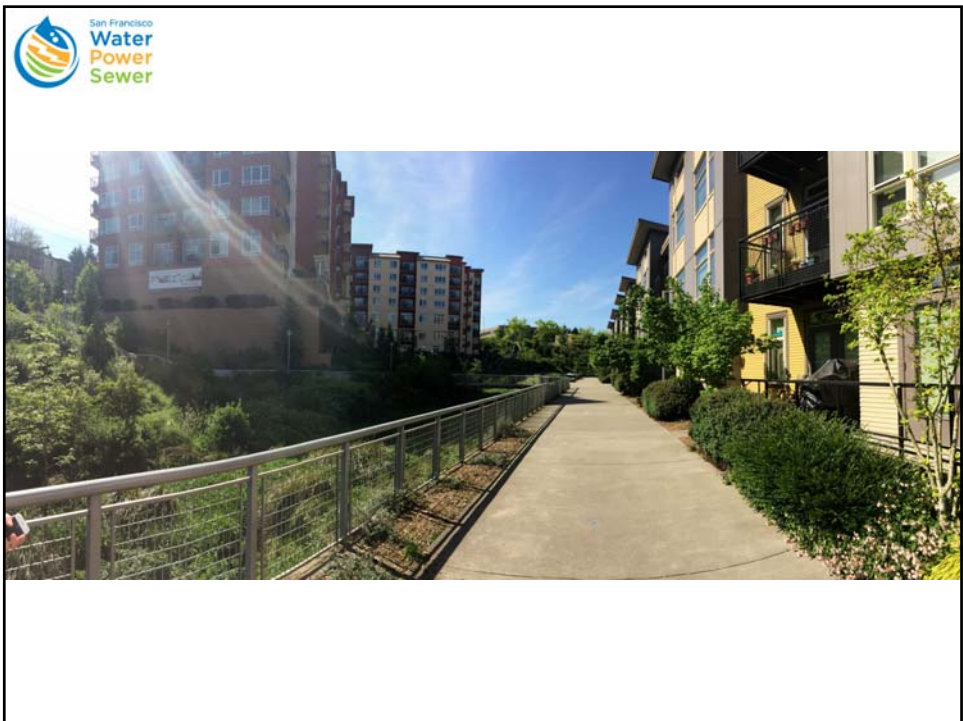
Image from SvR at <http://www.svrdesign.com/>











ANY QUESTIONS?

Rosey Jencks

riencks@swater.org

