

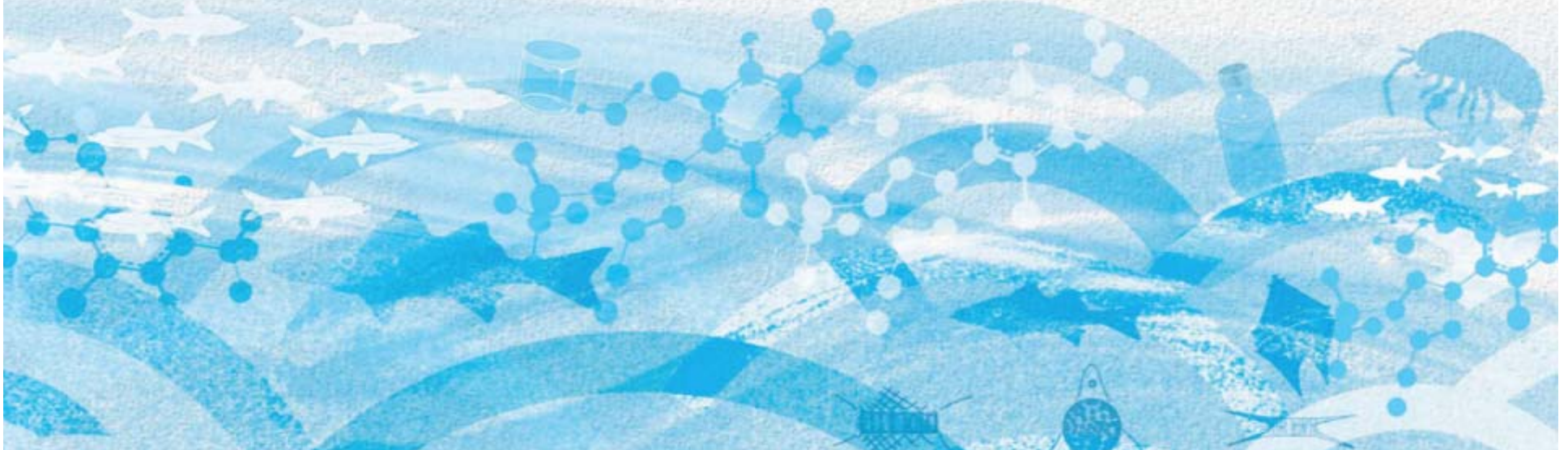
# RMP



[www.sfei.org](http://www.sfei.org)

## **The Regional Monitoring Program for Water Quality in San Francisco Bay**

***What's New  
What's Next  
And What Can We Do for You?***



## Objectives for Today

1. Update on Recent and Upcoming RMP Products
2. Discuss Ideas for Future Studies
3. Discuss Proposal for Shifting CTR Monitoring to the RMP



# Status and Trends Monitoring

Every 2 Years

'15

WATER



Every 3 Years

'16

BIRD EGGS



Every 4 Years

SEDIMENT



Every 5 Years

SPORT FISH

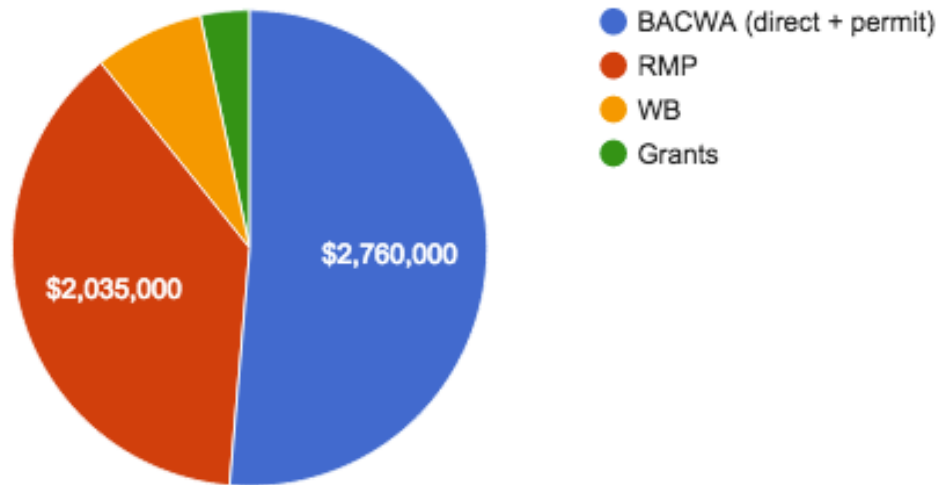
BIVALVES



'14



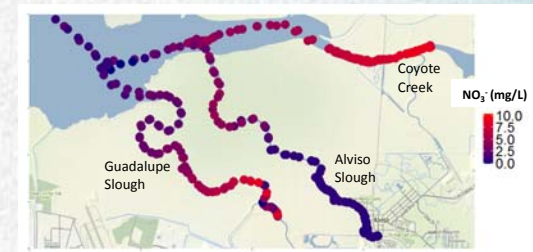
# RMP Nutrient Funding: 2012-2016



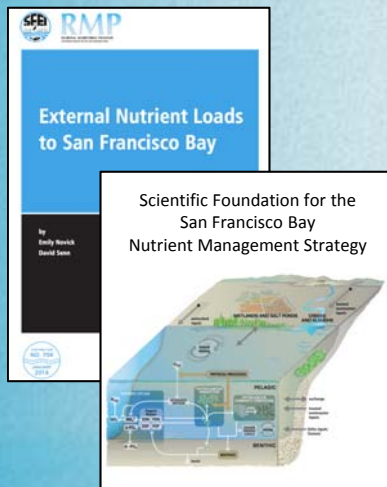
## Moored Sensors and DO in margins



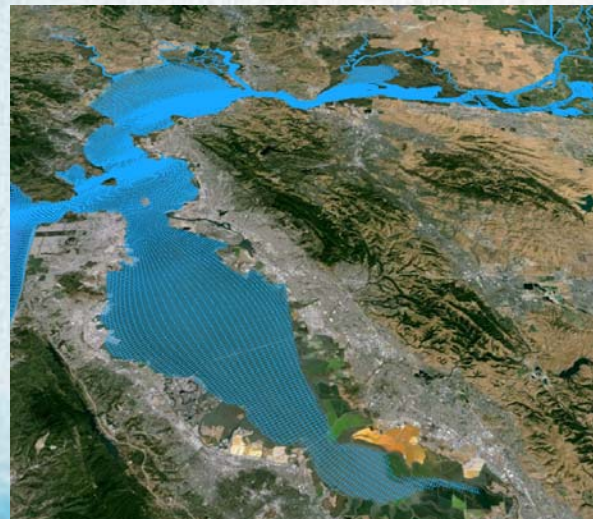
## High-res biogeochemical mapping



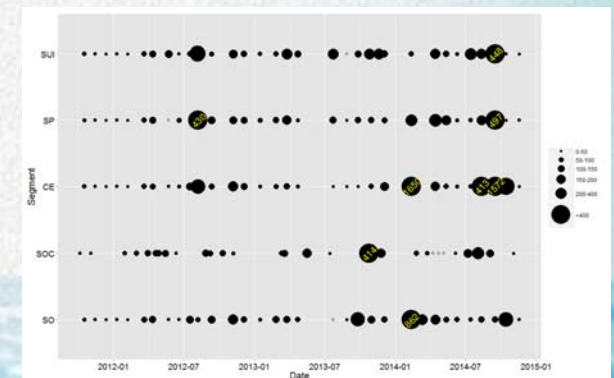
## Key Reports



## Biogeochemical Modeling

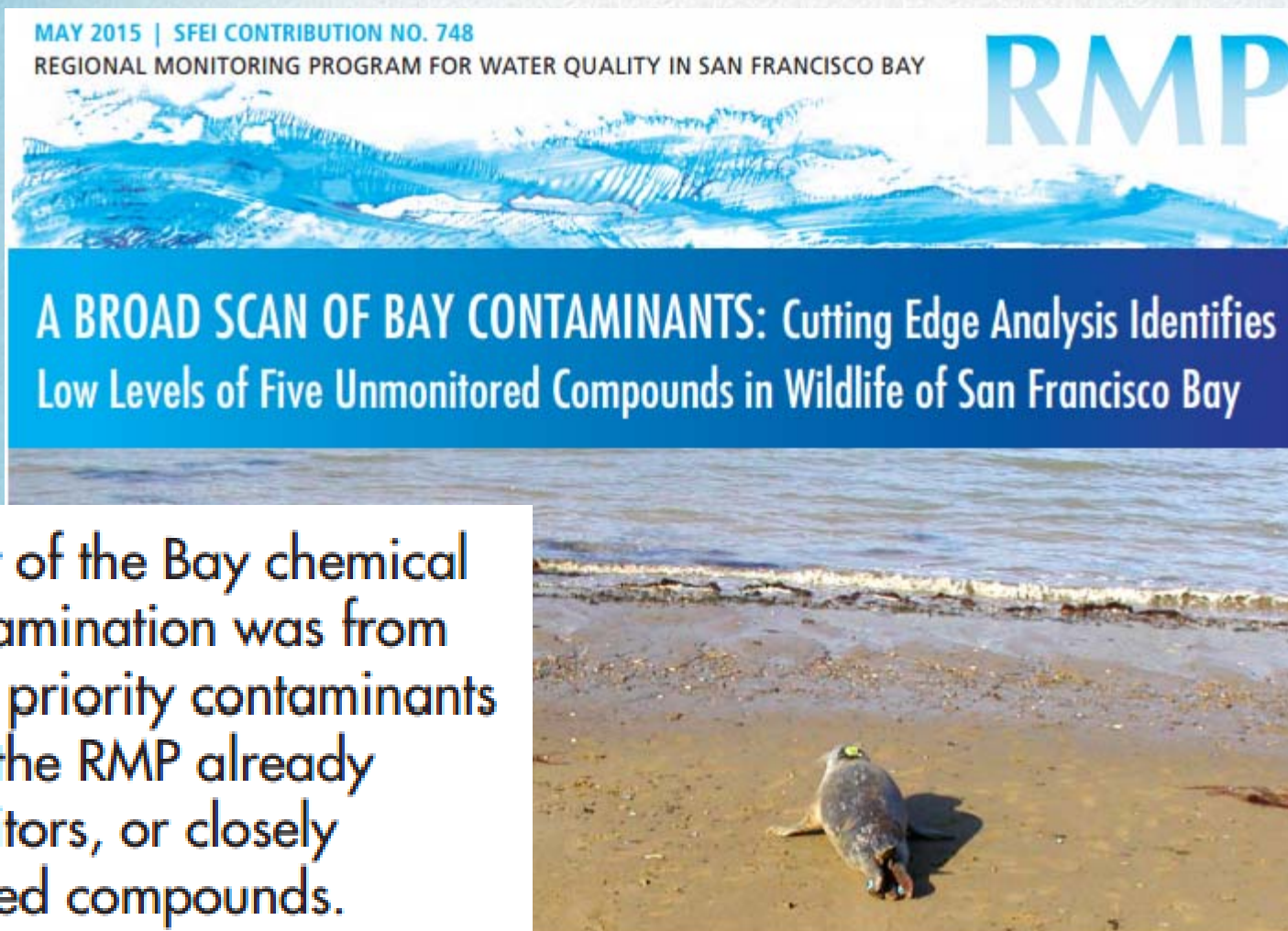


## Algal Toxins





# Non-Targeted Analyses Complement Traditional Monitoring Programs

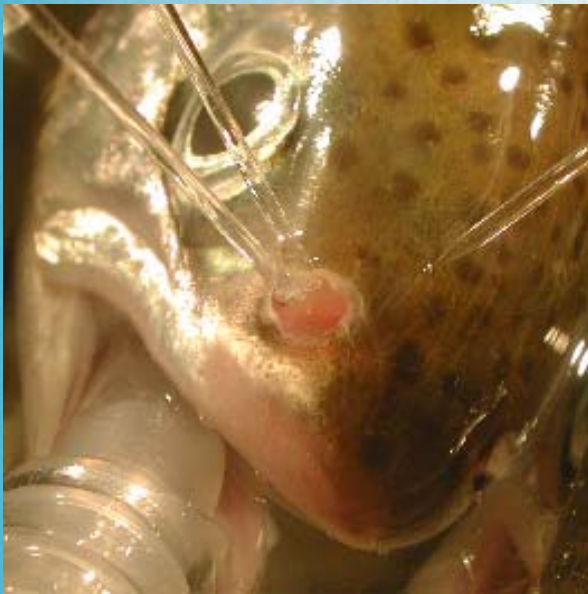


Most of the Bay chemical contamination was from high priority contaminants that the RMP already monitors, or closely related compounds.



# Copper and Selenium Effects on Fish

Copper Effects on  
Olfaction Toxicity



Non-Lethal Sturgeon  
Muscle Plug Monitoring



Sturgeon Derby Monitoring  
For Multiple Tissue Types





# RMP Annual Meeting and Pulse Report - September 2015

## Plenary Speakers

David Sedlak



Andy Lipkis



Meredith Williams



Tom Mumley





## Our Typical Perspective





# Bay RMP and Delta RMP Coordination

## A unique platform for ecosystem-scale monitoring

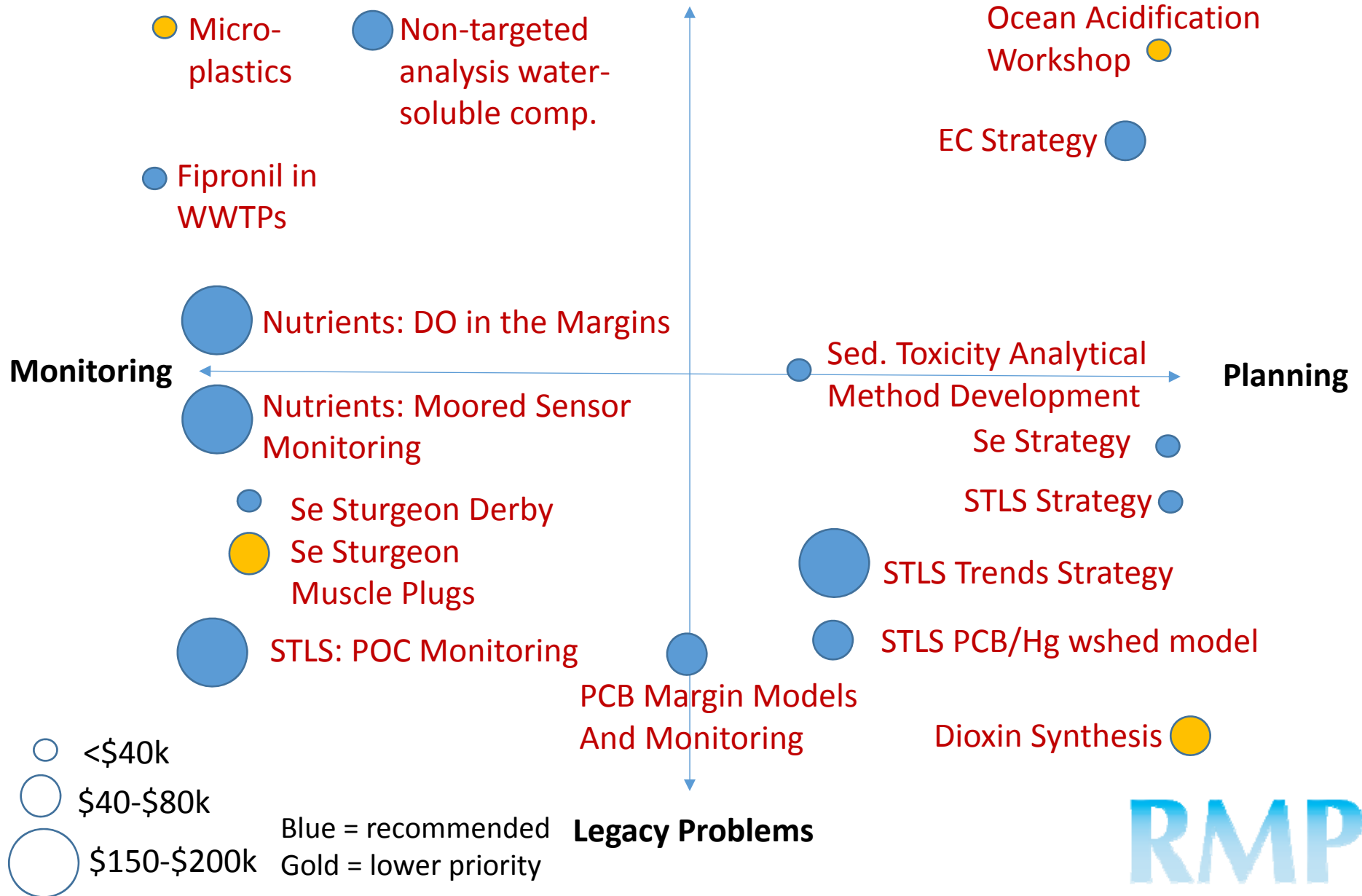




# 2016 RMP Proposals for Special Studies

Pending  
SC Approval!

Problems of the Future



RMP



# Planning for Future RMP Studies

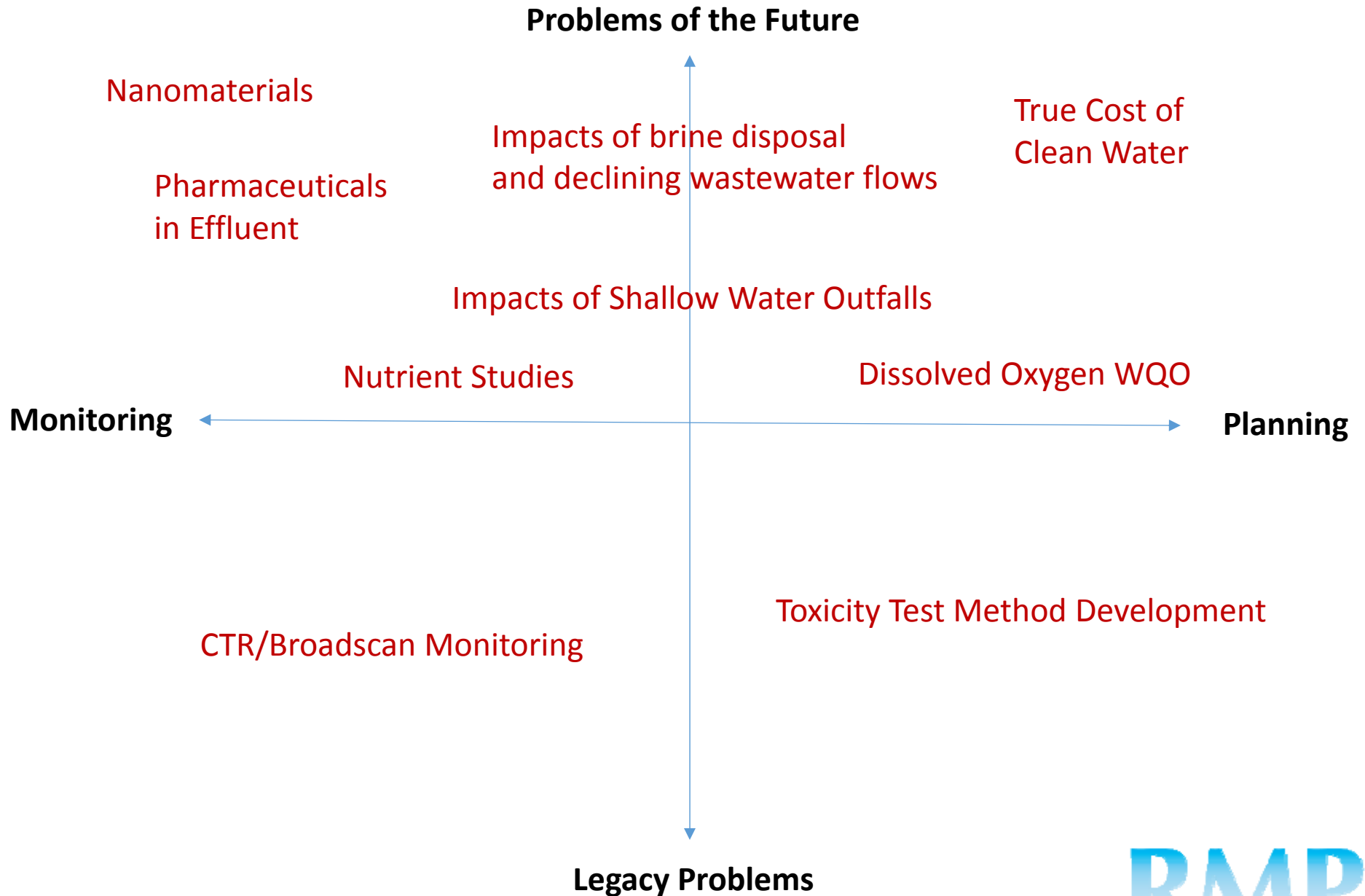
What would you do if you had access to:

- A unique platform for regional studies
- Independent and peer-reviewed science
- Infrastructure and experience to produce high-impact results
- Management decision-makers?

# RMP



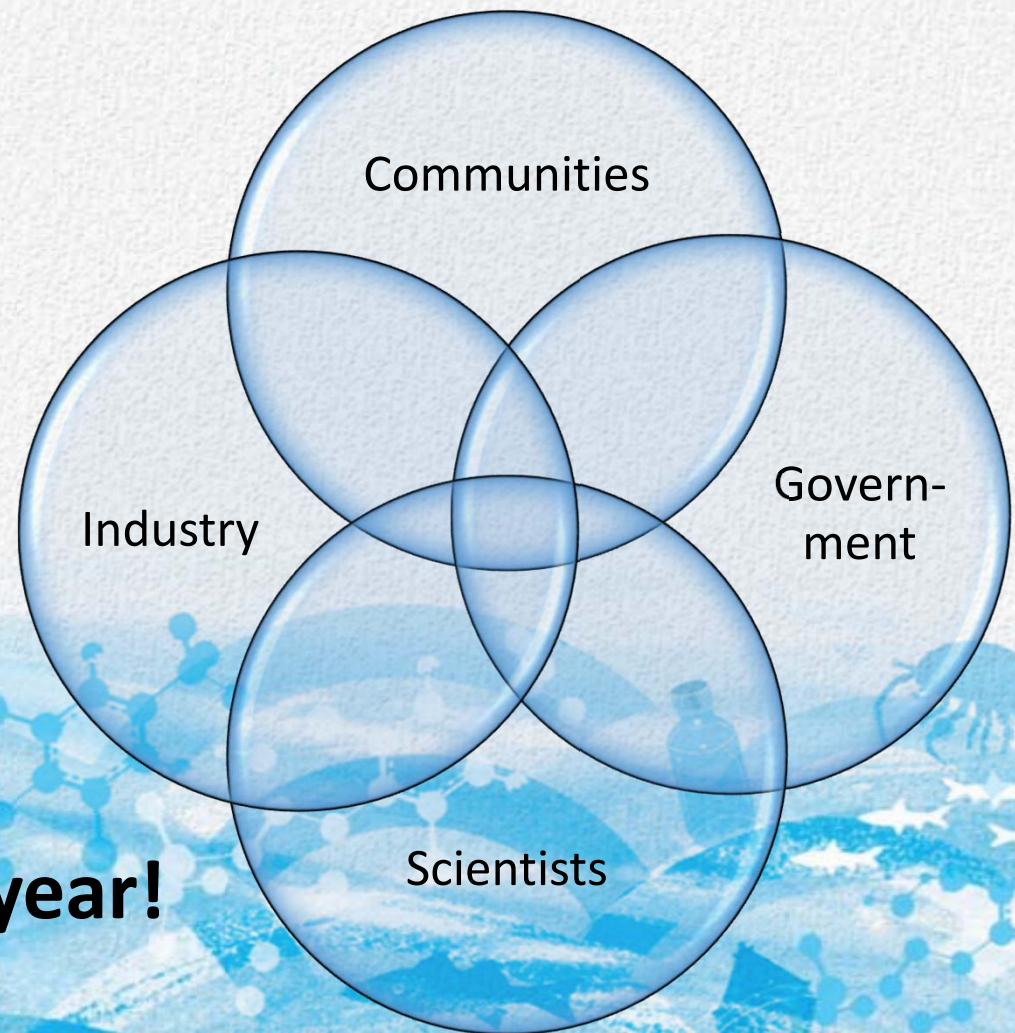
# Ideas for 2017+ RMP Proposals for Special Studies



**RMP**

# What is the Regional Monitoring Program (RMP)?

An innovative partnership to understand the health of San Francisco Bay



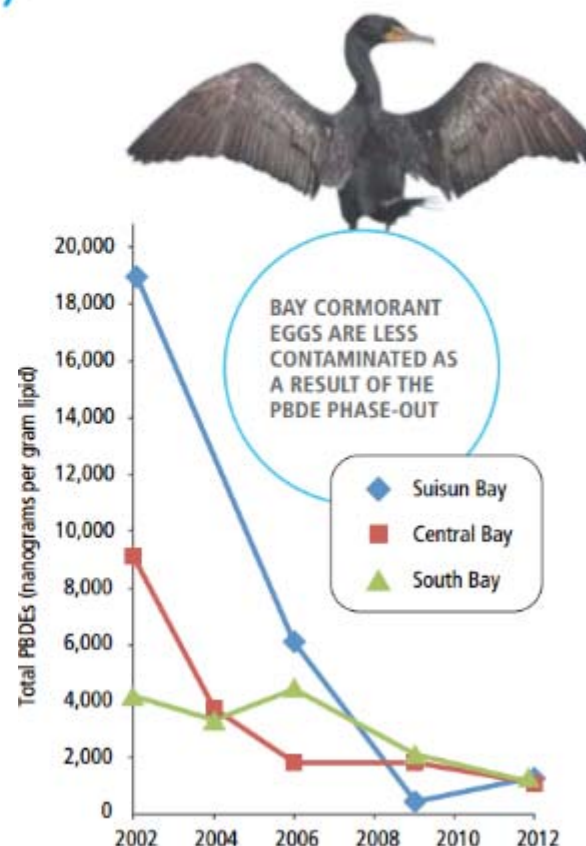
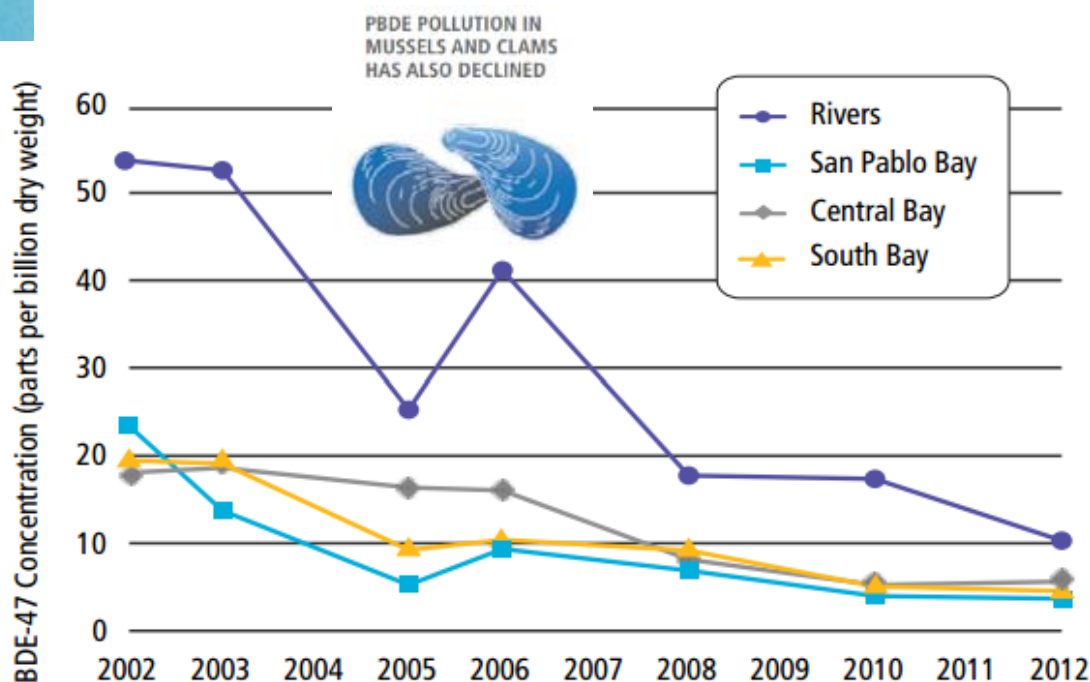
**Celebrating our 23<sup>rd</sup> year!**



# Emerging Contaminants Research Yields High Impact Results

**RMP**  
REGIONAL MONITORING PROGRAM  
FOR WATER QUALITY IN SAN FRANCISCO BAY

Ten Years After Toxic Chemical Phase-Out,  
Strong Signs of Recovery  
for San Francisco Bay



**ENVIRONMENTAL**  
Science & Technology

**San Francisco Chronicle**

SFGATE.COM | Sunday, December 28, 2014 | PRINTED ON RECYCLED PAPER | \$3.00

# Funding Challenges and Opportunities

## Challenges

RMP is facing short-term and long-term revenue shortfall

AWWA Survey: 38% of water agencies are not covering the full cost of services

## Opportunity

Reduced CTR effluent monitoring in exchange for more RMP monitoring and EC research

