

Hillsborough County Public Utilities Department

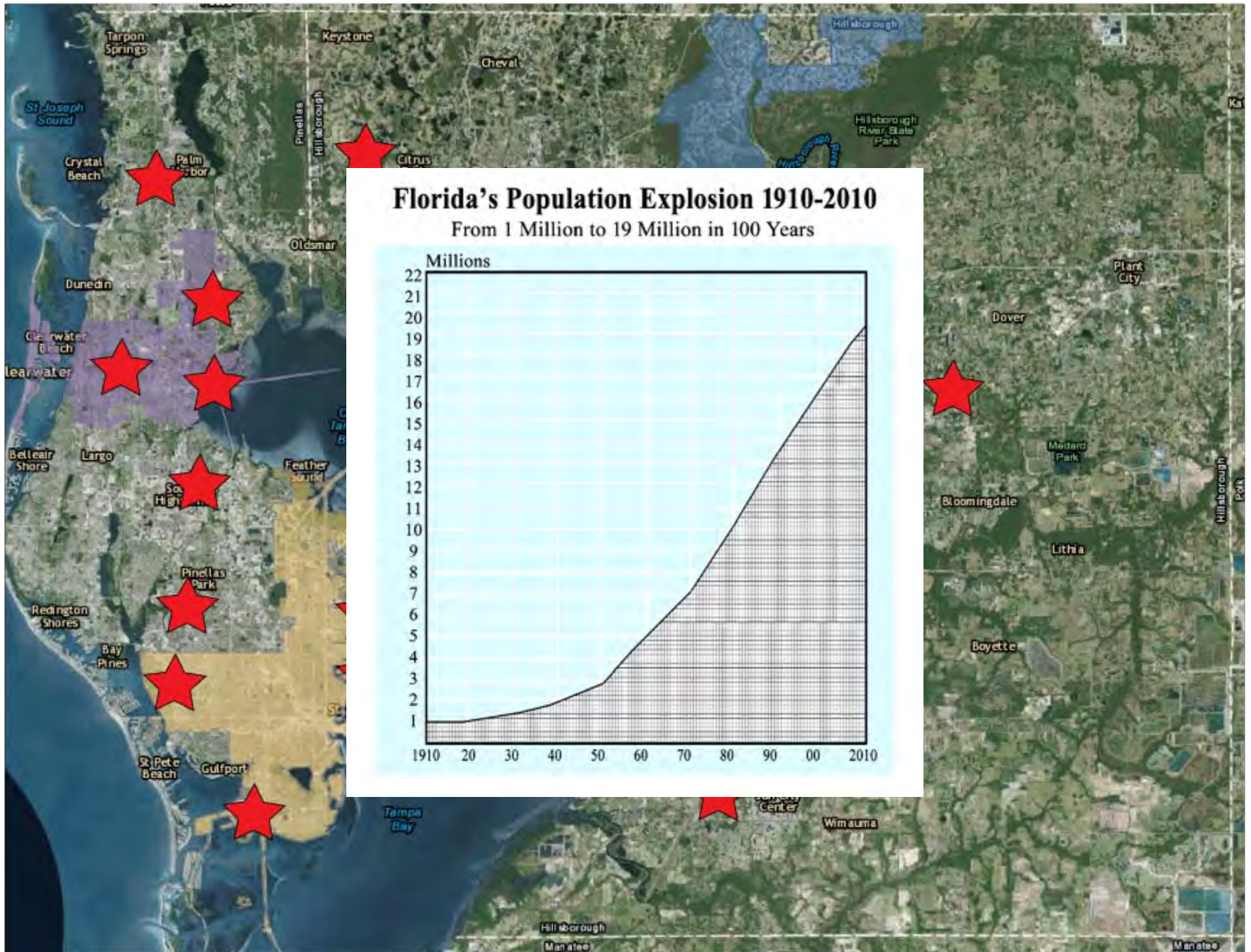
A Utility Perspective on AWTP Operation

Department Overview

- 725 Employees
 - 3 Divisions
 - 4 Business Support Functions
- 175,000 Customer Accounts Serving 600,000
- 6 AWTP facilities
 - Total permitted capacity 60 MGD
 - ADF 40 MGD
- \$200 Million Annual Operating Budget

Regulatory Drivers

- Wilson-Grizzle Act 1972
 - Required Advanced Treatment (Secondary)
- Grizzle-Figg Act 1987
 - Redefined Advanced Treatment to 5-5-3-1
 - Established Compliance Date

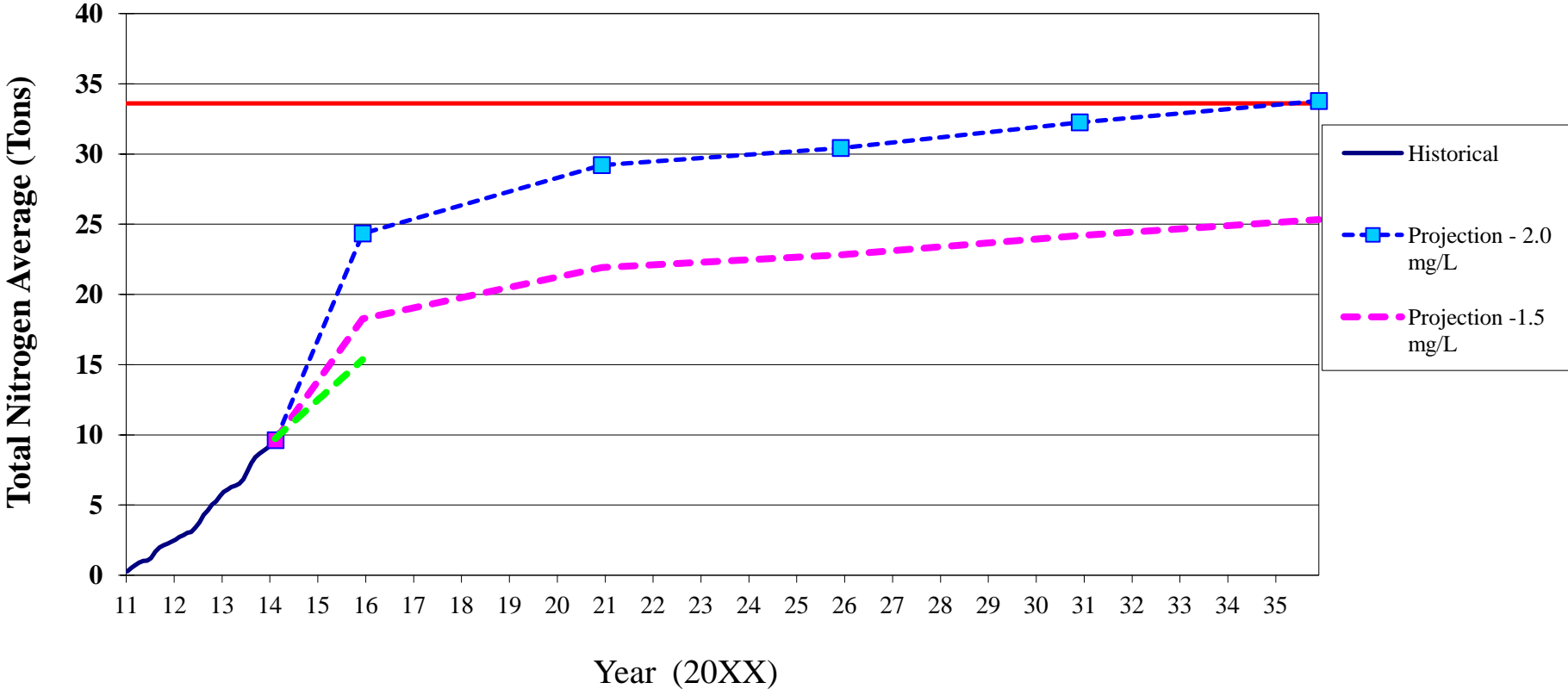


Operating Environment

- Meet Water Quality Requirements
 - Permit 5-5-3-1
 - Plant Performance
 - Effluent Toxicity Testing
 - TMDL

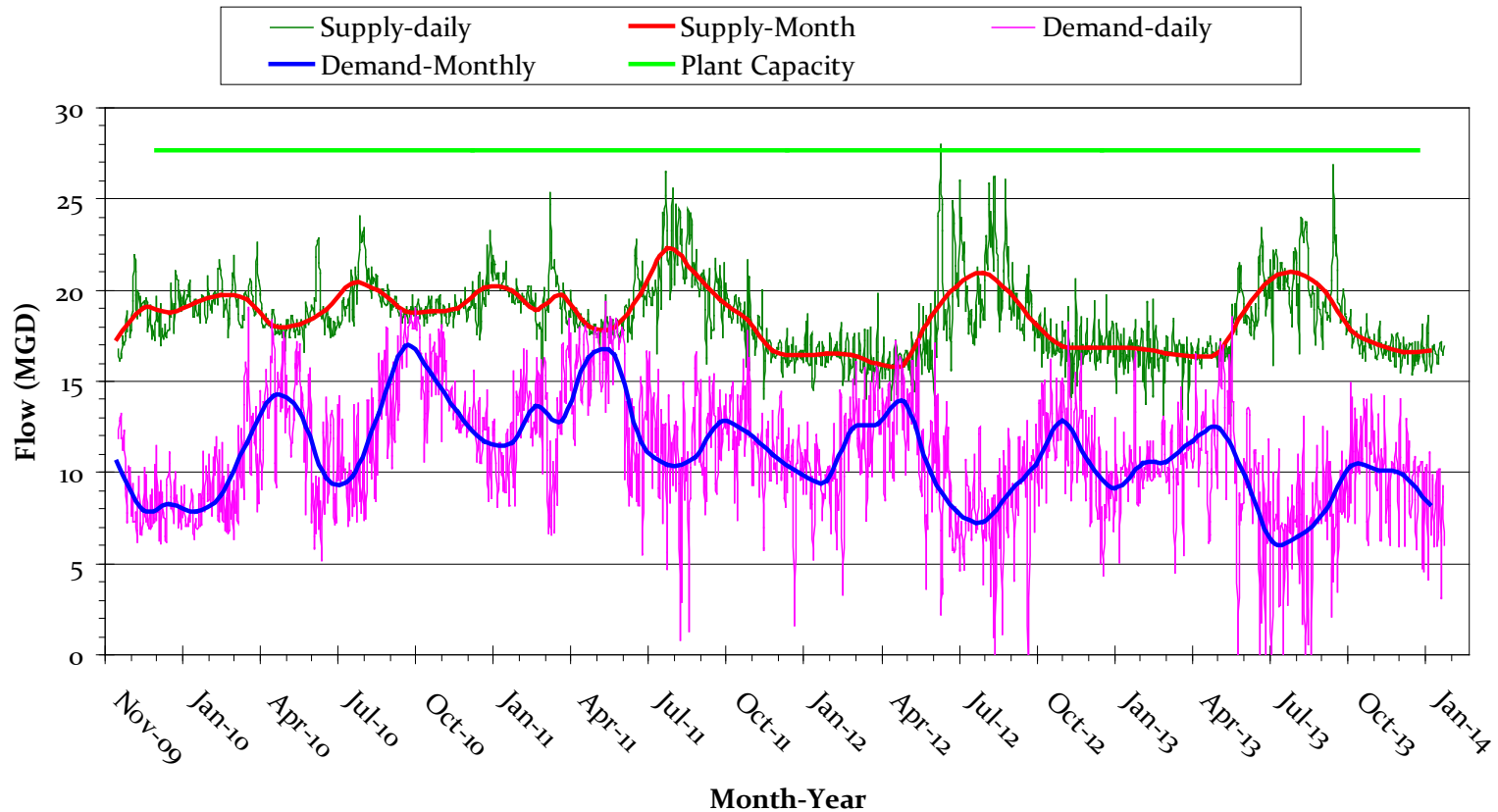
Nutrient Loading Limits

Northwest Service Area TMDL Trend



Reclaimed Water Demand

Northwest Service Area Reclaimed Water Supply and Demand Daily Flows



Cost of Operations

- Varies across each plant
 - Average \$1.57 per 1000 gallons
 - Cost includes labor, electricity, chemicals (excludes maintenance and R&R)
 - Cost for Denitrification \$0.31 per 1000 gallons
 - Cost for Phosphorus \$0.02 per 1000 gallons
 - Toxicity Testing \$1,500 per test

River Oaks AWT – 10MGD









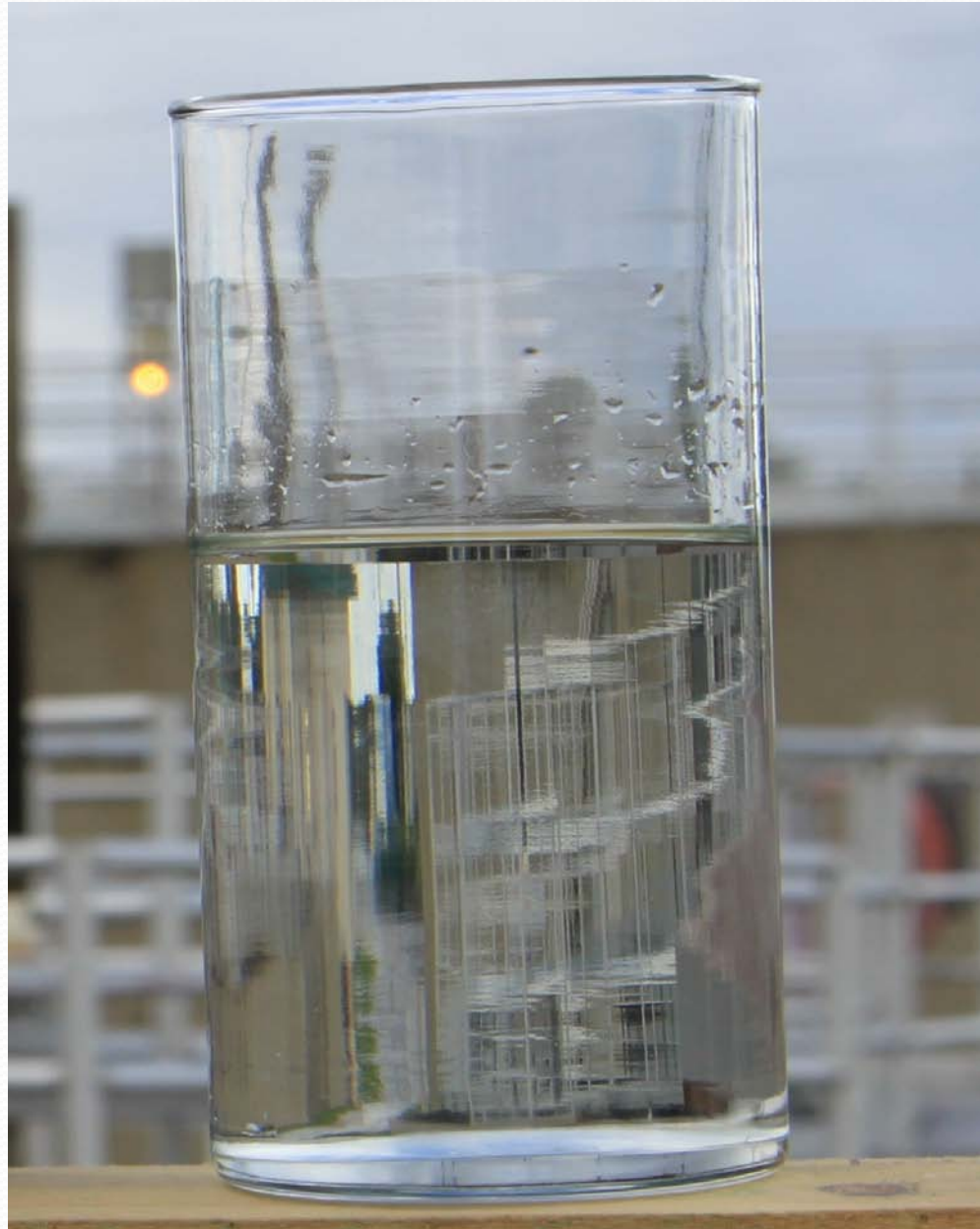














QUESTIONS....

