



# Executive Board Meeting Agenda

Thursday, July 25, 2013, 9:00 a.m. – 12:00 p.m.  
 EBMUD Lab Library, 2020 Wake Ave., Oakland, CA

<u>Agenda Item</u>	<u>Time</u>	<u>Page #</u>
<b>ROLL CALL AND INTRODUCTIONS</b>	9:00 a.m. – 9:05 a.m.	
<b>PUBLIC COMMENT</b>	9:05 a.m. – 9:06 a.m.	
<b>CONSIDERATION TO TAKE AGENDA ITEMS OUT OF ORDER</b>	9:06 a.m. – 9:07 a.m.	
<b>CONSENT CALENDAR</b>	9:07 a.m. – 9:12 a.m.	
1. June 27, 2013 BACWA Executive Board Meeting Minutes		3 – 7
2. May 2013 Treasurer’s Report		8 – 13
3. Reallocation of Remaining SFEI Nutrients 2013 Contract Funds; File 12,680.		14
4. Agreement with Stephanie Hughes for BAPPG Multi-pollutant Outreach not to exceed \$16,000 for FY 2013-14; File 13,065.		15 – 16
<b>REPORTS</b>	9:12 a.m. – 9:50 a.m.	
5. Committee Reports		17 – 21
6. Executive Board Reports		
7. Executive Director Report		22 – 27
8. Regulatory Program Manager Report		28
9. Chair & Executive Director Authorized Actions		29 – 32
a. Executive Director Authorization of Amendment 1 to Zentraal agreement for Prop84 Website to extend termination date to June 30, 2014; File 12,819.		
b. Executive Director Authorization of agreement with JT Litho for BAPPG Outreach, not to exceed \$250 for FY 2012-13; File 13,055.		
c. Executive Director Authorization of agreement with Adammer for BAPPG Baywise Website, not to exceed \$4,999 for FY 2013-14; File 13,061.		
d. Executive Director Authorization of agreement with Adammer for BACWA website, not to exceed \$1,500 for FY 2013-14; File 13,062.		
<b>OTHER BUSINESS</b>	9:50 a.m. – 11:59 a.m.	
10. <u>Discussion</u> : Nutrients		
a. Technical Work		
i. First Year Data Report and Analyses		33
ii. Nutrient Monitoring in Year 2		
iii. Approval of Agreement with SFEI for Nutrients, not to exceed \$330,000 for FY 2013-14; File 13,064.		34 – 53
iv. Technical Symposium on Nutrients		54 – 58
v. EBMUD Grant Proposal		59 – 64

<ul style="list-style-type: none"> <li>b. Governance Structure <ul style="list-style-type: none"> <li>i. Debrief - Task Force Meeting with SF Bay Regional Water Board, June 27, 2013</li> <li>ii. BACWA Proposed Steering Committee</li> </ul> </li> <li>c. Regulatory <ul style="list-style-type: none"> <li>i. Nutrient Watershed Permit Member Survey</li> <li>ii. Formation of BACWA's Watershed Permit Negotiating Team</li> <li>iii. Sacramento Amicus Brief Filing</li> </ul> </li> </ul>		<p>65</p> <p>66</p>
11. <u>Discussion</u> : SFPUC Permit Comment Letter		67 – 69
12. <u>Discussion</u> : Sewer Rate Survey Enhancements		70 – 86
13. <u>Discussion</u> : Potential Pardee Discussion Topics		87
14. <u>Discussion</u> : BACWA Representative from Sac Regional to Joint SFEI/ASC Board		
15. <u>Discussion</u> : Succession Planning		88 – 89
16. <u>Discussion</u> : Board Meeting Calendar 2014		90 – 93
<b>SUGGESTIONS FOR FUTURE AGENDA ITEMS</b>	11:59 a.m. – 12:00 p.m.	
<b>NEXT REGULAR MEETING</b> The next regular meeting of the Board is scheduled for August 29, 2013 at the EBMUD Treatment Plant Lab Library.		
<b>ADJOURNMENT</b>	12:00 p.m.	



## Executive Board Meeting Minutes

Monday, June 27, 2013, 9:00 a.m. – 12:00 p.m.  
EBMUD Lab Library, 2020 Wake Avenue, Oakland, CA

---

### ROLL CALL AND INTRODUCTIONS

Executive Board Representatives: Mike Connor, Chair (East Bay Dischargers Authority); Curt Swanson (Central Contra Costa Sanitary District); Jim Ervin (San Jose); Ben Horenstein (East Bay Municipal Utility District); Laura Pagano (SFPUC)

Other Attendees: Melody LaBella (Central Contra Costa Sanitary District); Randy Schmidt (Central Contra Costa Sanitary District); Amanda Roa (Delta Diablo Sanitation District); Greg Baatrup (Fairfield-Suisun Sewer District); Bhavani Yerrapotu (Sunnyvale); Dan Stevenson (Sunnyvale); E. J. Shalaby (West County Agency); Matt Krupp (Palo Alto); David Senn (SFEI); Monica Oakley (RMC Environmental); Denise Conners (Larry Walker Associates); Jim Kelly (JMK Engineering); Mike Faulk (HDR); Andre Gharagozian (Carollo); Lorien Fono (Patricia McGovern Engineers); Dave Williams (BACWA); Alexandra Gunnell (BACWA).

### PUBLIC COMMENT

There were no public comments.

### CONSIDERATION TO TAKE AGENDA ITEMS OUT OF ORDER

The Board decided to take various items out of order to accommodate Laura Pagano's request to leave the meeting by 11:30.

### CONSENT CALENDAR

Agenda item 5 was pulled from the Consent Calendar for discussion.

*Agenda items 1 – 4 and 6 were approved in a motion made by Laura Pagano and seconded by Ben Horenstein. The motion carried unanimously.*

### CONSENT CALENDAR

1. May 23, 2013 BACWA Executive Board Meeting Minutes
2. April 2013 Treasurer's Report
3. Funding and Collaboration Criteria
4. Fiscal Year 2014 Workplans and Budget
6. Amendments to Fiscal Year 2013 Contracts
  - a. PME for RPM services, extend termination date to 12/31/2013 and increase contract value by \$25,000; File 12,729
  - b. WBA for IRWMP support, extend termination date to 6/30/2014; File 12,786
  - c. SFEI for Nutrients, extend termination date to 12/31/2013; File 12,680
  - d. Avila for Prop 50 Grant Administration, extend termination date to 12/31/2013; File 12,780

For agenda item 5, the Board was reminded of the standard contracting language whereby the

consultant or BACWA can terminate the agreement with a 30-day notice. A discussion of BACWA's contracting policies and procedures, including soliciting technical support proposals from consultants will be added to the Pardee Technical Seminar agenda for discussion. *Laura Pagano made a motion to approve **agenda item 5**. Jim Ervin seconded the motion, and the motion passed unanimously.*

5. Fiscal Year 2014 Contracts

- a. RMC for Collections Systems Committee and As Needed Technical Support, \$45,000; File 12,974
- b. LWA for As Needed Technical Support, \$25,000; File 12,973
- c. EOA for As Needed Technical Support, \$20,000; File 12,972
- d. Kennedy Jenks for Info Share Group Support, \$25,000; File 12,971
- e. J. M. Kelly Engineering for As Needed Technical Support, \$15,000; File 12,975
- f. HDR for As Needed Technical Support, \$30,000; File 12,976
- g. Alexandra Gunnell for AED services, \$75,000; File 12,977
- h. CH2M Hill for AIR Committee Support, \$74,440; File 12,978
- i. SFEI for Nutrients, \$355,000; File 12,980

#### **OTHER BUSINESS**

Under **item 13, IRWMP Funding** was discussed. The proposal recommended by IRWMP Representatives (Brian Campbell and Cheryl Munoz) and the Executive Director (ED) was reviewed, and the Board supported their suggestion to utilize the estimated 2015 unspent funds, \$35,600, to fund a portion of the Kennedy Jenks budget overage.

**Agenda item 14, Bay Planning Coalition's Energy & Water Nexus Summit Sponsorship**, was considered by the Board. Using BACWA's Collaboration and Funding Criteria, the Board reviewed the request and approved a contribution of \$600 in a motion made by Curt Swanson, seconded by Laura Pagano. The motion passed with four yes votes; EBMUD abstained from voting. Laura Pagano noted that including more on resource recovery in the program may be of benefit. The ED will relay the suggestion to John Coleman.

The ED also noted that he has been asked to participate as a panel member for an upcoming Bay Planning Coalition seminar on stormwater, and inquired if any agency staff may be available to take his place. Bhavani Yerrapotu will check with Melody Tovar on her availability, and Melody LaBella suggested checking with Tim Potter. Ben Horenstein and Lorien Fono were also noted as possible candidates.

**For agenda item 15, Proposed Revisions to ASC Bylaws** were included in the handout packet and discussed. The ED noted that legal counsel has reviewed and provided revisions to the San Francisco Estuary Institute (SFEI) bylaws and that they have been approved by the SFEI governing board. This version of the Aquatic Science Center (ASC) bylaws has been subjected to the same legal review and revision process. There is no liability for BACWA, and if concerns arise about the direction of the Joint SFEI/ASC Board, then the ASC could be dissolved, as a vote of dissolution is limited to the ASC signatory members. *In a motion made by Laura Pagano and seconded by Jim Ervin, the Board unanimously approved the new ASC Bylaws.* The ED recommended including a discussion on the July

agenda to review BACWA's process for loaning one of the representative positions to Sacramento Regional, specifically examining the process of determining who serves as the representative.

**For Item 16, Executive Board Chair and Vice Chair Nomination/Election,** *Jim Ervin made a motion to reappoint the existing Chair, Mike Connor, and Vice Chair, Laura Pagano. Mike and Laura accepted their nominations. Curt Swanson seconded and the motion passed unanimously.*

**Under Item 17, Upcoming BACWA Executive Board Meetings were discussed.** The ED informed the Board that Bruce Wolfe may have a scheduling conflict that would prevent him from attending the Pardee Technical seminar on October 25<sup>th</sup>. As requested by the Board, the ED will investigate Bruce's availability for attending on either October 23<sup>rd</sup> or October 24<sup>th</sup>. Ben Horenstein noted that as the agenda is crafted the Board will need to consider who else might be asked to attend. The ED will investigate the possibility of scheduling a separate meeting that could be convened at Orinda, which would include a larger group. Bhavani Yerrapotu expressed interest in participating in an Orinda meeting.

Attendees were notified that the August 22, 2013 BACWA Board meeting has been rescheduled for August 29th.

Based on Board member availability, starting in November 2013, BACWA monthly Board meetings will be scheduled on the third Friday of each month from 9:00 a.m. to 12:00 p.m.

## **REPORTS**

Executive Board representatives provided updates from each of the Principal agencies under **agenda item 7, Executive Board Reports.**

Ben Horenstein reported that EBMUD will be applying for an EPA grant to explore sidestream nutrient removal technology. The deadline to submit proposals is July 8<sup>th</sup> and agencies interested in partnering with EBMUD should contact him. The Board will schedule a special meeting to determine BACWA's level of support and consider reallocating EBMUD's outstanding in-kind 2012/2013 contribution to BACWA to fund this effort.

Laura Pagano provided an update on SFPUC's permit negotiation process. Laura and Monica explained that SFPUC has concerns about proposed permit language that requires the permittee to comply with enforcement provisions contained within their old permit even when new permit is being appealed. The ED will consult with this issue with BACWA legal counsel but may not be able to do so prior to the comment submission deadline of July 1<sup>st</sup>, in which case the ED will report back to the Board about the possibility of commenting on future permits. Laura Pagano also noted that SFPUC is concerned about proposed permit language that states "in the future the Board may reduce the ammonia effluent limit". The Board may consider discussing this with Water Board staff at an upcoming Joint meeting.

Jim Ervin reported that San Jose has been experiencing intermitted toxicity incidents. They held a workshop to kick off TRE efforts. Melody LaBella noted that the pyrethroid report is being drafted and will likely be completed by the end of the summer.

Curt Swanson reported that CCCSD is working with consultants to conduct the nutrient studies required in their permit. CCCSD Board approval of a contract for the new General Manager is expected in July.

Mike Connor of EBDA notified attendees that the Coastal Conservancy is rewriting wetlands goals to be updated for climate change. The draft is being reviewed by the science committee and will likely affect those agencies attempting to conduct projects on the edge of the Bay.

**Committee Reports** were reviewed under **agenda item 7**.

The **BAPPG** report was included in the handout packet and reviewed by committee representative Melody La Bella. As noted in the report, BAPPG will be working with Dylan Garner to consider updating Pollutant Minimization Program requirements to more closely match Pollution Prevention Reporting Guidelines (2005), though Jim Ervin's concern that the guidelines should not be incorporated into permits will be taken into consideration. For fiscal year 2014 Karri Ving of SFPUC will serve as BAPPG Chair and Mike Auer of USD will be the Vice Chair. Information on applying for the annual Dr. Teng-Chung Wu award was also included in the handout packet.

Matt Krupp, Biosolids Committee Chair, reviewed the committee report included in the handout packet and updated the Board on the recent facility tour hosted by City of American Canyon. The committee is continuing to work with CASA on numerous issues including concerns surrounding EPA's consideration to reduce biosolids staff resources and pending state and federal biosolids legislation. He suggested that member agencies work with their legislative representatives on state and federal issues noted in his report.

The Permits Committee report was included in the handout packet and reviewed by Regulatory Program Manager (RPM), Lorien Fono. At the June committee meeting Lila Tang and Bill Johnson noted that in the future SF Bay Regional Water Board staff may be conducting compliance inspections instead of contractors. Proposed toxicity plan requirements developed at the last Task Force meeting were included in the committee report and reviewed by the RPM.

The **Executive Director's May Report** was included in the handout packet for **agenda item 9** and reviewed by Dave Williams.

The **Regulatory Program Manager (RPM) Report** was included in the handout packet and reviewed by Lorien Fono under **agenda item 10**. It was noted that for fiscal year 2014 the RPM will provide support for the Recycled Water and AIR committees. She also reported that she has confirmed ERS query process with SFEI and included the data request form as an attachment to the RPM report in the packet.

The Board returned to the remaining **OTHER BUSINESS agenda item, 12, to discuss Nutrients**.

Under item **12.a.i.**, the Board reviewed **the Consultant Technical Seminar on Nutrients** draft agenda. The ED, RPM, Ben Horenstein, and Bhavani Yerrapotu will work with the consultant to consider removing section one from the agenda to be addressed in a separate national case study

workshop. They will also revise section four to increase San Jose segment to 30 minutes by decreasing EBMUD portion by 15 minutes and will consider adding a discussion of how these items integrate with proposed watershed permit requirements. Speaker availability will be confirmed and then a notification to save the date will be sent to BACWA members.

Under item **12.b.**, the Board discussed **Nutrients Governance Structure** issues, and the ED distributed and reviewed a draft agenda for the June 27<sup>th</sup> Task Force meeting. It was noted that Sacramento Regional has expressed interest in participating on the Steering Committee. The Board suggested investigating development of a secondary group in addition to the core group and determining participation based on financial contribution. There was also a suggestion to include BASMAA instead of the RMP, and possibly including the Bay Planning Coalition as well as smaller dischargers and those representing subembayments.

Under item **12.c.**, **Nutrients Regulatory** issues were discussed. The ED distributed a handout summarizing take-aways from the June 21<sup>st</sup> BACWA Members' Workshop and outlining proposed next steps. In an effort to gain additional feedback from members, the Board suggests reviewing the proposed next steps at the next Permits Committee meeting. The ED will also survey member agency representatives.

The RPM notes that Bob Seyfried is to come to the July 25<sup>th</sup> BACWA Board meeting to present on the Sacramento Regional Permit. Lorian will circulate a copy of the presentation to the Board to determine whether to include it on the agenda.

#### **SUGGESTIONS FOR FUTURE AGENDA ITEMS**

There were no suggestions for future agenda items.

The next monthly BACWA Board meeting is scheduled for, **July 25, 2013** at the EBMUD Treatment Plant Lab Library.

The meeting adjourned at 12:00 p.m.



# Bay Area Clean Water Agencies

A Joint Powers Public Agency

Leading the Way to Protect our Bay

July 15, 2013

MEMO TO: Bay Area Clean Water Agencies Executive Board  
MEMO FROM: D. Scott Klein, Controller, East Bay Municipal Utility District *D. Klein*  
SUBJECT: Eleven Month Treasurer's Report

As required by section eight of the Joint Powers Agreement establishing the Bay Area Clean Water Agencies (BACWA) and California Government Code Sections 6500 et seq., attached is the BACWA Treasurer's Report for the period covering **July 1, 2012 through May 31, 2013** (eleven months of Fiscal Year 2012-2013). This report covers expenditures, cash receipts, and cash transfers for the following BACWA funds:

- Bay Area Clean Water Agencies (BACWA),
- BACWA Training Fund (Trng Fnd),
- Air Issues and Regulation Group (AIR),
- Bay Area Pollution Prevention Group (BAPPG),
- BACWA Legal Reserve Fund (Legal Rsrv),
- Water Quality Attainment Strategy (WQA CBC),
- BACWA Operating Reserve Fund (BACWAOpRes),
- Regional Water Recycling (RWR),
- BACWA Reserve (Reserve),
- Water/Wastewater Operator Training (WOT),
- Prop84 Bay Area Integrated Regional Water Mgmt (PRP84),
- WQA Emergency Reserve Fund (WQA Emerg),
- WQA Tech Action Fund (TechAction),
- CBC Operating Reserve Fund (CBC OpRsrv), and
- Prop50 Bay Area Integrated Regional Water Mgmt (PRP50)



## Fund Balances as of month end 05/31/13

DESCRIPTION	BEGINNING FUND BALANCE 07/1/12	TOTAL RECEIPTS	TOTAL DISBURSEMENTS	ENDING FUND BALANCE 05/31/13	OUTSTANDING ENCUMBRANCES	UNOBLIGATED FUND BALANCE 05/31/13
BACWA	597,182.02	601,755.69	459,779.90	739,157.81	254,211.97	484,945.84
TRNG FND	247,407.05	840.26	-	248,247.31	-	248,247.31
AIR	3,372.18	78,489.01	47,266.93	34,594.26	36,266.07	(1,671.81)
BAPPG	41,498.18	79,656.77	58,602.11	62,552.84	3,087.21	59,465.63
LEGAL RSRV	302,899.56	1,028.73	-	303,928.29	-	303,928.29
WQA CBC	214,405.51	450,269.00	264,389.65	400,284.86	177,973.68	222,311.18
BACWAOPRES	152,407.54	517.61	-	152,925.15	-	152,925.15
RWR	16,676.01	56.64	-	16,732.65	-	16,732.65
RESERVE	120,000.00	-	-	120,000.00	-	120,000.00
WOT	67,661.90	164,899.80	184,500.00	48,061.70	-	48,061.70
PRP84	39,115.70	2,117,786.27	843,268.07	1,313,633.90	37,946.86	1,275,687.04
WQA EMERG	403,866.08	1,371.63	-	405,237.71	-	405,237.71
TECHACTION	252,416.30	857.26	-	253,273.56	-	253,273.56
CBC OPRSRV	163,565.93	555.51	-	164,121.44	-	164,121.44
PRP50	167,637.69	2,674,441.14	2,661,096.13	180,982.70	27,990.55	152,992.15
	<u>2,790,112</u>	<u>6,172,525</u>	<u>4,518,903</u>	<u>4,443,734</u>	<u>537,476</u>	<u>3,906,258</u>

## BACWA Revenue Report for May 2013

DEPARTMENT	REVENUE TYPE	AMENDED BUDGET	CURRENT PERIOD			YEAR TO DATE				UNOBLIGATED
			DIRECT	INVOICED	JVS	DIRECT	INVOICED	JVS	ACTUAL	
Bay Area Clean Water Agencies	Administrative & General	-	-	-	-	7,341	-	-	7,341	(7,341)
Bay Area Clean Water Agencies	BDO Member Contributions	420,000	-	-	-	-	420,000	-	420,000	-
Bay Area Clean Water Agencies	BDO Fund Transfers	10,277	-	-	-	-	-	12,219	12,219	(1,942)
Bay Area Clean Water Agencies	BDO Interest Income	5,000	-	-	-	-	-	3,195	3,195	1,805
Bay Area Clean Water Agencies	BDO Assoc.&Affiliate Contr	159,000	-	-	-	-	159,000	-	159,000	-
<b>BACWA TOTAL</b>		<b>594,277</b>	-	-	-	<b>7,341</b>	<b>579,000</b>	<b>15,415</b>	<b>601,756</b>	<b>(7,479)</b>
BACWA Training Fund	BDO Interest Income	-	-	-	-	-	-	840	840	(840)
<b>TRNG FND TOTAL</b>		-	-	-	-	-	-	<b>840</b>	<b>840</b>	<b>(840)</b>
AIR-Air Issues&Regulation Grp	BDO Member Contributions	78,354	-	-	-	-	78,354	-	78,354	-
AIR-Air Issues&Regulation Grp	BDO Interest Income	-	-	-	-	-	-	135	135	(135)
<b>AIR TOTAL</b>		<b>78,354</b>	-	-	-	-	<b>78,354</b>	<b>135</b>	<b>78,489</b>	<b>(135)</b>
BAPPG-BayAreaPollutnPreventGrp	BDO Member Contributions	79,505	-	-	-	-	29,505	50,000	79,505	-
BAPPG-BayAreaPollutnPreventGrp	BDO Interest Income	3,079	-	-	-	-	-	152	152	2,927
<b>BAPPG TOTAL</b>		<b>82,584</b>	-	-	-	-	<b>29,505</b>	<b>50,152</b>	<b>79,657</b>	<b>2,927</b>
BACWA Legal Reserve Fnd	BDO Interest Income	-	-	-	-	-	-	1,029	1,029	(1,029)
<b>LEGAL RSRV TOTAL</b>		-	-	-	-	-	-	<b>1,029</b>	<b>1,029</b>	<b>(1,029)</b>
WQA-WtrQualityAttainmntStratgy	BDO Member Contributions	450,000	-	-	-	-	449,000	-	449,000	1,000
WQA-WtrQualityAttainmntStratgy	BDO Other Receipts	-	-	-	-	-	-	-	-	-
WQA-WtrQualityAttainmntStratgy	BDO Interest Income	1,600	-	-	-	-	-	1,269	1,269	331
<b>WQA CBC TOTAL</b>		<b>451,600</b>	-	-	-	-	<b>449,000</b>	<b>1,269</b>	<b>450,269</b>	<b>1,331</b>
BACWA OperatingRsrve Fnd	BDO Interest Income	-	-	-	-	-	-	518	518	(518)
<b>BACWAOPRES TOTAL</b>		-	-	-	-	-	-	<b>518</b>	<b>518</b>	<b>(518)</b>

## BACWA Revenue Report for May 2013

DEPARTMENT	REVENUE TYPE	AMENDED BUDGET	CURRENT PERIOD			YEAR TO DATE				UNOBLIGATED
			DIRECT	INVOICED	JVS	DIRECT	INVOICED	JVS	ACTUAL	
Regional Water Recycling	BDO Interest Income	-	-	-	-	-	-	57	57	(57)
<b>RWR TOTAL</b>		-	-	-	-	-	-	<b>57</b>	<b>57</b>	<b>(57)</b>
WOT - Wtr/Wwtr Operat Training	BDO Member Contributions	150,000	-	18,000	-	-	164,500	-	164,500	(14,500)
WOT - Wtr/Wwtr Operat Training	BDO Interest Income	-	-	-	-	-	-	400	400	(400)
<b>WOT TOTAL</b>		<b>150,000</b>	-	<b>18,000</b>	-	-	<b>164,500</b>	<b>400</b>	<b>164,900</b>	<b>(14,900)</b>
Prop84BayAreaIntegRegnlWtrMgmt	BDO Interest Income	-	-	-	-	-	-	255	255	(255)
Prop84BayAreaIntegRegnlWtrMgmt	Administrative Support	-	-	-	-	-	71,569	-	71,569	(71,569)
Prop84BayAreaIntegRegnlWtrMgmt	Novato North Area Proj.	-	-	-	-	-	593,750	-	593,750	(593,750)
Prop84BayAreaIntegRegnlWtrMgmt	Novato So. Area, Hamilton Fiel	-	-	593,750	-	-	593,750	-	593,750	(593,750)
Prop84BayAreaIntegRegnlWtrMgmt	Napa St Hospital Stage 1	-	-	593,750	-	-	593,750	-	593,750	(593,750)
Prop84BayAreaIntegRegnlWtrMgmt	Sears Point W/Ind & Wtrshd Res	-	-	-	-	-	6,667	-	6,667	(6,667)
Prop84BayAreaIntegRegnlWtrMgmt	Bair Island Restoration	-	-	-	-	-	6,667	-	6,667	(6,667)
Prop84BayAreaIntegRegnlWtrMgmt	South Bay Salt Pond Habitat Re	-	-	-	-	-	6,667	-	6,667	(6,667)
Prop84BayAreaIntegRegnlWtrMgmt	Regional Green Infrastructure	-	-	-	-	-	24,041	-	24,041	(24,041)
Prop84BayAreaIntegRegnlWtrMgmt	Weather Based Irrigation Contr	-	-	57,716	-	-	57,716	-	57,716	(57,716)
Prop84BayAreaIntegRegnlWtrMgmt	Watershed Partnership Technica	-	-	-	-	-	11,417	-	11,417	(11,417)
Prop84BayAreaIntegRegnlWtrMgmt	Stream Restoration w/Schools i	-	-	-	-	-	149,491	-	149,491	(149,491)
Prop84BayAreaIntegRegnlWtrMgmt	Flood Infrastructure Mapping	-	-	-	-	-	2,047	-	2,047	(2,047)
<b>PRP84 TOTAL</b>		-	-	<b>1,245,216</b>	-	-	<b>2,117,531</b>	<b>255</b>	<b>2,117,786</b>	<b>(2,117,786)</b>
WQA Emergency Resrve Fnd	BDO Interest Income	-	-	-	-	-	-	1,372	1,372	(1,372)
<b>WQA EMERG TOTAL</b>		-	-	-	-	-	-	<b>1,372</b>	<b>1,372</b>	<b>(1,372)</b>
WQA Tech Action Fund	BDO Interest Income	-	-	-	-	-	-	857	857	(857)
<b>TECHACTION TOTAL</b>		-	-	-	-	-	-	<b>857</b>	<b>857</b>	<b>(857)</b>
CBC Operating Resrve Fnd	BDO Interest Income	-	-	-	-	-	-	556	556	(556)
<b>CBC OPRSRV TOTAL</b>		-	-	-	-	-	-	<b>556</b>	<b>556</b>	<b>(556)</b>
Prop50BayAreaIntegRegnlWtrMgmt	BDO Interest Income	-	-	-	-	-	-	586	586	(586)
Prop50BayAreaIntegRegnlWtrMgmt	South Bay Advanced Regional RW	-	-	-	-	-	2,673,855	-	2,673,855	(2,673,855)
<b>PRP50 TOTAL</b>		-	-	-	-	-	<b>2,673,855</b>	<b>586</b>	<b>2,674,441</b>	<b>(2,674,441)</b>

### BACWA Expense Report for May 2013

DEPARTMENT	EXPENSE TYPE	AMENDED BUDGET	CURRENT PERIOD				YEAR TO DATE				OBLIGATED	UNOBLIGATED
			ENC	PV	DA	JV	ENC	PV	DA	JV		
Bay Area Clean Water Agencies	BC-Collections System	25,000	(1,786)	1,786	-	-	3,236	21,764	-	-	25,000	-
Bay Area Clean Water Agencies	BC-Permit Committee	-	-	-	-	-	-	-	-	-	-	-
Bay Area Clean Water Agencies	BC-Water Recycling Committee	13,359	-	-	-	-	12,903	367	-	-	13,269	90
Bay Area Clean Water Agencies	BC-Biosolids Committee	6,515	-	-	1,817	-	500	1,015	1,817	-	3,332	3,183
Bay Area Clean Water Agencies	BC-InfoShare Groups	25,000	-	-	-	-	21,040	3,960	-	-	25,000	-
Bay Area Clean Water Agencies	BC-Laboratory Committee	7,000	-	-	-	-	-	-	-	-	-	7,000
Bay Area Clean Water Agencies	BC-Miscellaneous Committee Sup	140,000	(545)	545	-	-	79,209	65,442	-	(349)	144,302	(4,302)
Bay Area Clean Water Agencies	LS-Regulatory Support	2,000	-	-	-	-	1,968	5,451	-	-	7,419	(5,419)
Bay Area Clean Water Agencies	LS-Executive Board Support	2,000	-	-	-	-	1,470	530	-	-	2,000	-
Bay Area Clean Water Agencies	CAS-CWAA	1,000	-	-	-	-	-	-	1,000	-	1,000	-
Bay Area Clean Water Agencies	CAS-PSSEP	20,000	-	-	20,000	-	-	-	20,000	-	20,000	-
Bay Area Clean Water Agencies	CAS-CPSC	5,000	-	-	-	-	-	-	5,000	-	5,000	-
Bay Area Clean Water Agencies	CAS-PSI	500	-	-	-	-	-	-	500	-	500	-
Bay Area Clean Water Agencies	CAR-BACWA Annual Report	15,000	-	-	-	-	15,433	-	-	-	15,433	(433)
Bay Area Clean Water Agencies	CAR-BACWA Website Development/	10,720	(1,350)	1,350	-	-	6,260	6,249	1,514	(2,285)	11,738	(1,018)
Bay Area Clean Water Agencies	AS-BACWA Admin Expense	3,000	-	-	2,904	-	-	-	4,962	-	4,962	(1,962)
Bay Area Clean Water Agencies	CAR-Other Communications	5,000	(168)	168	-	-	1,343	657	-	-	2,000	3,000
Bay Area Clean Water Agencies	SP-BAPPG Contribution	50,000	-	-	-	-	-	-	-	50,000	50,000	-
Bay Area Clean Water Agencies	GBS-Contingency	30,000	-	-	-	-	946	24,054	16,510	(4,478)	37,032	(7,032)
Bay Area Clean Water Agencies	GBS- Meeting Support	13,000	(67)	67	-	-	421	579	8,704	-	9,704	3,296
Bay Area Clean Water Agencies	AS-Executive Director	160,000	(43,750)	43,750	-	-	79,221	143,448	-	-	222,669	(62,669)
Bay Area Clean Water Agencies	AS-Assistant Executive Directo	70,000	(5,940)	5,940	-	-	6,485	61,715	-	-	68,200	1,800
Bay Area Clean Water Agencies	AS-EBMUD Administrative Servic	40,000	-	-	-	-	23,778	16,222	-	(8,427)	31,573	8,427
Bay Area Clean Water Agencies	AS-Insurance	4,000	-	-	-	-	-	-	3,860	-	3,860	140
Bay Area Clean Water Agencies	BDO-CAS-Stanford ERC	10,000	-	-	-	-	-	-	10,000	-	10,000	-
<b>BACWA TOTAL</b>		<b>658,094</b>	<b>(53,606)</b>	<b>53,606</b>	<b>24,720</b>	<b>-</b>	<b>254,212</b>	<b>351,453</b>	<b>73,866</b>	<b>34,461</b>	<b>713,992</b>	<b>(31,177)</b>
AIR-Air Issues&Regulation Grp	Administrative Support	3,977	-	-	-	-	-	-	-	3,977	3,977	-
AIR-Air Issues&Regulation Grp	BDO Contract Expenses	79,556	-	-	-	-	36,266	43,290	-	-	79,556	-
<b>AIR TOTAL</b>		<b>83,533</b>	<b>-</b>	<b>-</b>	<b>-</b>	<b>-</b>	<b>36,266</b>	<b>43,290</b>	<b>-</b>	<b>3,977</b>	<b>83,533</b>	<b>-</b>
BAPPG-BayAreaPollutnPreventGrp	BAPPG-CE-Fog	14,000	-	-	-	-	-	-	8,000	-	8,000	6,000
BAPPG-BayAreaPollutnPreventGrp	BAPPG-CE-Mercury	-	-	-	-	-	-	-	-	-	-	-
BAPPG-BayAreaPollutnPreventGrp	BAPPG-CE-Pesticides	10,000	-	-	-	-	-	-	10,000	-	10,000	-
BAPPG-BayAreaPollutnPreventGrp	BAPPG-CE-Copper	5,000	-	-	-	-	-	-	4,833	-	4,833	167
BAPPG-BayAreaPollutnPreventGrp	BAPPG-CE-Pharmaceutical	7,499	-	-	-	-	-	6,499	2,346	-	8,845	(1,346)
BAPPG-BayAreaPollutnPreventGrp	BAPPG-CE-General P2	-	-	-	-	-	-	-	-	-	-	-
BAPPG-BayAreaPollutnPreventGrp	BAPPG-CE-Emerging Issues	8,000	-	-	-	-	-	-	313	-	313	7,687
BAPPG-BayAreaPollutnPreventGrp	BAPPG-CE-Other	16,539	-	-	860	-	1,859	7,179	860	-	9,898	7,501
BAPPG-BayAreaPollutnPreventGrp	Administrative Support	3,800	-	-	-	-	-	-	-	3,800	3,800	-
BAPPG-BayAreaPollutnPreventGrp	BAPPG-CE-Multi-Pollutant	19,000	-	-	-	-	1,228	14,772	-	-	16,000	3,000
<b>BAPPG TOTAL</b>		<b>83,838</b>	<b>-</b>	<b>-</b>	<b>860</b>	<b>-</b>	<b>3,087</b>	<b>28,450</b>	<b>26,352</b>	<b>3,800</b>	<b>61,689</b>	<b>23,009</b>
WQA-WtrQualityAttainmntStratgy	WQA-CE-Technical Support	525,838	(3,428)	3,428	-	-	153,836	214,635	11,919	(4,644)	375,746	150,092
WQA-WtrQualityAttainmntStratgy	WQA-CE-Collaborations & Sponso	65,000	-	-	-	-	-	-	15,000	-	15,000	50,000
WQA-WtrQualityAttainmntStratgy	WQA-CE-Commun. & Reporting	26,000	-	-	-	-	6,000	-	-	-	6,000	20,000
WQA-WtrQualityAttainmntStratgy	WQA-CE-Other	45,000	(300)	300	-	-	18,138	12,483	14,996	-	45,617	(617)
<b>WQA CBC TOTAL</b>		<b>661,838</b>	<b>(3,728)</b>	<b>3,728</b>	<b>-</b>	<b>-</b>	<b>177,974</b>	<b>227,118</b>	<b>41,915</b>	<b>(4,644)</b>	<b>442,363</b>	<b>219,475</b>

### BACWA Expense Report for May 2013

DEPARTMENT	EXPENSE TYPE	AMENDED BUDGET	CURRENT PERIOD				YEAR TO DATE				OBLIGATED	UNOBLIGATED
			ENC	PV	DA	JV	ENC	PV	DA	JV		
WOT - Wtr/Wwtr Operat Training	Administrative Support	2,500	-	-	-	-	-	-	-	2,500	2,500	-
WOT - Wtr/Wwtr Operat Training	BDO Contract Expenses	158,000	-	-	-	-	-	-	182,000	-	182,000	(24,000)
<b>WOT TOTAL</b>		<b>160,500</b>	-	-	-	-	-	-	<b>182,000</b>	<b>2,500</b>	<b>184,500</b>	<b>(24,000)</b>
Prop84BayArealIntegRegnlWtrMgmt	Administrative Support	-	(30)	30	-	-	7,278	1,446	36,204	1,942	46,869	(46,869)
Prop84BayArealIntegRegnlWtrMgmt	BDO Contract Expenses	-	(8,816)	8,816	-	-	30,669	22,931	-	-	53,600	(53,600)
Prop84BayArealIntegRegnlWtrMgmt	Novato North Area Proj.	-	-	-	-	-	-	-	593,750	-	593,750	(593,750)
Prop84BayArealIntegRegnlWtrMgmt	Regional Green Infrastructure	-	-	-	-	-	-	-	24,041	-	24,041	(24,041)
Prop84BayArealIntegRegnlWtrMgmt	Weather Based Irrigation Contr	-	-	-	-	-	-	-	162,955	-	162,955	(162,955)
<b>PRP84 TOTAL</b>		-	<b>(8,846)</b>	<b>8,846</b>	-	-	<b>37,947</b>	<b>24,377</b>	<b>816,949</b>	<b>1,942</b>	<b>881,215</b>	<b>(881,215)</b>
Prop50BayArealIntegRegnlWtrMgmt	Administrative Support	-	-	-	-	-	774	226	167	(337)	830	(830)
Prop50BayArealIntegRegnlWtrMgmt	BDO Contract Expenses	-	(1,650)	1,650	-	-	27,217	11,688	-	(1,608)	37,297	(37,297)
Prop50BayArealIntegRegnlWtrMgmt	South Bay Advanced Regional RW	-	-	-	-	-	-	-	2,650,961	-	2,650,961	(2,650,961)
<b>PRP50 TOTAL</b>		-	<b>(1,650)</b>	<b>1,650</b>	-	-	<b>27,991</b>	<b>11,914</b>	<b>2,651,127</b>	<b>(1,945)</b>	<b>2,689,087</b>	<b>(2,689,087)</b>



# BACWA EXECUTIVE BOARD ACTION REQUEST

AGENDA NO.: 3

FILE NO.: 12,680

MEETING DATE: July 25, 2013

**TITLE: Approve reallocation of funds remaining for SFEI Nutrients FY2013 agreement.**

MOTION

RESOLUTION

DISCUSSION

## ACTION UNDER CONSIDERATION

Approve reallocation of remaining funds for the fiscal year 2013 agreement with the San Francisco Estuary Institute (SFEI) to provide Nutrient Strategy Development assistance.

## SUMMARY

As of end of June, SFEI has approximately \$100,000 remaining on its FY2013 contract. This funding was originally allocated for model development and application. In December 2012 the BACWA board agreed that this funding should be reallocated to other projects that would commence in CY2013. Some of the reallocation has already been authorized, and portions of it spent (e.g., decision tree, scope development).

At its June meeting, the BACWA Board authorized extension of the FY2013 contract with SFEI. At the July 2013 meeting, we ask that the Board authorize the reallocation of those funds as described in the table below. The proposed distribution of funds was determined alongside the FY2014 proposal and scope, and the combined funds will support the FY2014 efforts.

	Amount	Notes
Developing a conceptual model for nutrient exchange through the Golden Gate	\$25,000	BACWA authorized this project (collaboration with M Stacey and J Largier). A draft report is expected in early July.
Lower South Bay Synthesis	\$40,000	The proposed 2014 scope of work for the Lower South Bay synthesis was developed assuming this funding from FY2013 would also be used
Finalizing the Suisun Synthesis #1	\$10,000	This report was completed in draft form in Nov 2012, and circulated for comment in Feb 2013. This funding will support response to comments and editing.
On-going nutrient science coordination and program management in 2014	\$25,000	

## FISCAL IMPACT

This action has no direct fiscal impact since funds have already been obligated in the original agreement and carried forward from fiscal year 2013 into fiscal year 2014. This is only a request to reallocate those funds.

## ALTERNATIVES

This action does not require a consideration of alternatives.

*Attachments:* None



## BACWA EXECUTIVE BOARD ACTION REQUEST

AGENDA NO.: 4

FILE NO.: 13,065

MEETING DATE: July 25, 2013

### **TITLE: BACWA Executive Board Approval to Execute Agreement with Stephanie Hughes for BAPPG Copper, Mercury and Pharmaceuticals Outreach Support**

MOTION \_\_\_\_\_  RESOLUTION \_\_\_\_\_

#### **RECOMMENDED ACTION**

Authorize the execution of a contract with Stephanie Hughes for BAPPG Copper and Mercury Outreach support in an amount not to exceed \$16,000 for fiscal year 2013-14.

#### **SUMMARY**

This contract will provide support for the Bay Area Pollution Prevention Group to continue training and outreach efforts to reduce dental mercury and copper plumbing discharges to Bay Area POTWs. Last year, Stephanie Hughes provided similar support to BAPPG. New for this year's scope is:

- 1) Outreach to Building Inspectors and Contractors regarding identification and management of hazardous materials during building demolition.
- 2) A proposed literature review to evaluate the public health, environmental and life-cycle impacts of copper pipe installed with petroleum-based flux (with or without lead solder) versus PEX pipe installed via standard procedure.
- 3) Outreach to plumbing supply stores to determine how commonly lead-based solder is used in today's installations of copper piping.

The focus of this year's mercury efforts will be to continue providing presentations to Bay Area community college dental assistant/hygienist schools during the 2013/14 school year on mercury pollution prevention at dental facilities. Copper outreach work will include coordination of presentations to plumbing students at Laney College. The pharmaceutical outreach work will focus on the public health and environmental reasons for proper pharmaceutical disposal, now that Ms. Hughes has secured one hour of continuing education credit, by the State RN Board, for all nurses attending her presentation.

Dental mercury outreach efforts will be carried out under the supervision of Melody LaBella of CCCSD. Copper plumbing outreach will be under the supervision of Meg Gale of SFPUC and nursing outreach will be under the supervision of Karin North of the City of Palo Alto.

#### **FISCAL IMPACT**

Funds are available for this agreement and have been allocated for this project in the approved BAPPG FY 2013-14 budget.

#### **ALTERNATIVES**

No other alternatives were considered as the terms of this contract is consistent with BACWA contracting policies.

*Attachments:* Exhibit A: Scope of Work & Cost Estimate for 2013-14 Agreement with Stephanie Hughes, File No. 13,065





**STEPHANIE HUGHES, ChE P.E.**  
 Consulting Engineer / University Lecturer  
 1445 Emory Street, San Jose, California 95126

**SCOPE OF WORK & RATE/REIMBURSABLE EXPENSES - July 2013**

**CLIENT:** BAPPG  
**PROJECT:** Public and Professional Outreach  
**DATE:** 10-Jun-2013  
**PROJECT #** BACWA-10  
**FOR:** FY13/14 Outreach

SCOPE OF WORK DESCRIPTION	BUDGET		TOTAL
General Scope: conduct public outreach to professionals - focus on dental mercury, pharmaceutical disposal, demolition, and copper plumbing.	<b>Rate:</b>	\$165.00	
	<b>ODC</b>	<b>Hour Est</b>	
<b>TASK 1. Administration/Project Management</b> Update contact database. Reach out to contacts to schedule speaking engagement. Update all presentations. Prepare Annual Report in January 2014 for agency P2 reports.		16	\$2,640.00
<b>TASK 2. Speaking Engagements Throughout the Bay Area</b> <b>Task 2.1. Outreach to Dental Professionals (Year 5).</b> Conduct presentations to community colleges and other training programs for dental assistants and dental hygienists. Program topics will include the following waste management topics: mercury / amalgam, silizer fixer, anti-bacterial soaps, and pharmaceuticals. <u>Assume</u> 11 presentations for FY13-14. <b>Task 2.2. Outreach to Hospice Programs (Year 2).</b> This presentation has been accepted by the State RN Board for 1.0 hour of continuing education for nurses and hospice staff. The presentation describes the public health and environmental reasons for proper pharmaceutical disposal. <u>Assume</u> 3 presentations for FY 13-14. <b>Task 2.3. Outreach to Bay Area Plumber Training Programs (Year 5).</b> <u>Assumption:</u> 2 presentations at Laney College in FY 13-14. <b>Task 2.4. Outreach to Building Inspectors and Contractors regarding Demolition (Year 1).</b> Provide insights regarding identification and management of hazardous materials during building demolition. Present the BAPPG brochure and web site. <u>Assumption:</u> 3 presentations for FY 13-14.	\$ 406.00	27.5	\$4,944.00
	\$ 55.00	7.5	\$1,293.00
	\$ 55.00	5.0	\$880.00
	\$ 55.00	7.5	\$1,293.00
<b>TASK 3. Copper versus PEX Plumbing Research</b> Based on a pilot study conducted for SFPUC in FY 12-13, water flushable fluxes are NOT being used to install copper pipe, in spite of state and national standards. In addition, lead-based solder may also still be in widespread use. Therefore, I am recommending a literature review and additional outreach to plumbing supply stores. The goal of the literature review is to evaluate the public health, environmental, and life-cycle impacts of (1) copper pipe installed with petroleum-based flux (with or without lead solder) versus (2) PEX pipe installed via standard procedure. The goal of the outreach to plumbing supply stores is to further investigate the continued use of lead-based solder. <b>Deliverables:</b> Technical memorandum and presentation to BAPPG.	\$ -	30.0	\$4,950.00
<b>Totals</b>	<b>\$ 571.00</b>	<b>93.5</b>	<b>\$16,000.00</b>

**NOTES:**

This scope assumes that all handouts will be printed by a BAPPG member. ODC for parking, bridge tolls and estimated mileage at \$0.555/mile. This work is expected to begin in July 2013 and completed by June 30, 2014.





**Committee Request for Board Action: None**

**9 BACWA member agencies represented**

**Presentation Slides by CH2MHill can be made available to Executive Board upon request**

**Local Regulatory News**

- BAAQMD Regulation 2 Amendments - Will allow issuance of Prevention of Significant Deterioration (PSD) and New Source Review (NSR) permits. Will probably not be adopted until 2014.
- Inspectors have recently been looking at facilities' stationary emergency engines (at EBMUD and Union Sanitary) to gather data which may be used for future regulation.

**State Regulatory News**

*Greenhouse Gas Mandatory Reporting*

- Greenhouse Gas (GHG) Mandatory Reporting Deadlines – Verification statements due for all reports on Sept. 3 (except for facilities with abbreviated reporting, or facilities with a categorical operation that emit <25,00 MT/yr CO2 equivalents)
- CARB will update AB 32 Scoping Plan and GHG Reporting and Cap-and-Trade regulations. There has been discussion about looking at process emissions in industry, which would impact our agencies due to the high climate change impact of nitrous oxide emissions resulting from nutrient removal. Melody Tovar/Sunnyvale requested that BACWA's nutrient symposium include some acknowledgement of the climate change issues tied up with the different nutrient removal technologies. Workshop on Scoping Plan regulations will be July 30 in the Bay Area.
- Meter Accuracy and Calibrations requirements – CARB Cap-and-Trade regulation has requirements for meter accuracy and calibration for entities emitting >25,000 MT/yr anthropogenic CO2 equivalents. Central San was requested by the verifier to submit calibration verification although they were below this threshold.
- Proposed Revisions to CARB Mandatory Reporting of GHG Regulation – Changes some of the reporting details and will be considered for adoption Oct. 24. The CWCCG is reviewing the reg in detail for any impacts to POTWs
- Proposed Amendments to Cap-and-Trade Regulation –Amendments to be released for public comment in September, and considered for adoption in October.

*Proposed Alternative Diesel Fuel Regulation*

- The rule as written would affect cities/districts wanting to fuel fleets with biodiesel blends, and impact how the fuel is registered, formulated, and reported.
- Draft staff report will be released Aug. 1 and followed by a public workshop; it will be considered for adoption Sept. 26.

*Vapor Recovery Systems Amendments*

- Regulations will now apply to above-ground gasoline storage tanks and will accommodate modern sampling techniques.
- Public hearing to be held on July 25.

*Low Carbon Fuel Standards Development*

- CARB planning to finalize protocols by 2014.
- Also developing protocols for wastewater digester gas.

**National Regulatory News**

- GHG Mandatory Reporting – EPA changing the global warming potential (GWP) factors for methane and nitrous oxide, and the new factors will apply retroactively.
- President Obama's Climate Action Plan may provide financial incentives for biofuels, and provide agency grants for climate change adaptation.
- Stationary Reciprocating Internal Combustion Engines, National Emission Standards for Hazardous Air Pollutants (RICE NESHAP) - Amended April 1 and effective Oct. 13; introduces new testing and certification requirements.

**Announcements and Resources**

- CARB Diesel Training Courses scheduled in July and August.
- California Energy Commission Workshops (Challenges to Procuring Biomethane in California and Status of Bioenergy Development in California) – Workshops were held in the spring, but WebEx recordings are now available.
- EPA Guide: Energy Efficiency in Water and Wastewater Facilities: A Guide to Developing and Implementing GHG Reduction Programs now available.
- EPA Guide: Adaptation Strategies Guide for Water Utilities now available.
- Silicon Valley 2.0 Project – Santa Clara County strategy on climate change adaptation and impacts
- Biogenics Emission Coalition Update – Coalition trying to remove POTWs from being subject to Clean Air Act and Title V permitting requirements for biogenic emissions (POTWs would be subject starting in July 2014 under current regulations).
- California Bioresources Alliance 8<sup>th</sup> Annual Symposium will be held Sept. 18 and 19.
- 2013 Climate Leadership Award application process currently in progress.
- CalRecycle/CARB holding workshop on Waste Management Sector July 29.

**Grant Opportunities**

- California Financing Coordinating Committee Funding Fairs – to be held through October throughout the State.
- Clean Water State Revolving Fund Program – application process ongoing.
- California Energy Commission’s Energy Partnership Program - provides free energy audits.
- CARB’s Clean Vehicle Rebate Project – funded through FY 2013/2014.

**Member Agency Concerns**

- Numerous member POTWs indicated that the BAAQMD’s emissions data for their facilities is inaccurate and that getting access to the calculations and emissions factors from BAAQMD has been impossible. BAAQMD reports that they are having ongoing problems with a computer upgrade. Melody Tovar/Sunnyvale suggested that we add this topic to our next annual BACWA AIR/BAAQMD meeting. We will ask BAAQMD to present how they calculate permittee’s emissions and how the calculations and factors can be obtained.
- Talking points were previously provided to BACWA TED and ED to approach BAAQMD staff about improving accountability and turnaround times.
- Tim Grillo from Union San expressed how difficult it is to stay abreast of constantly changing regulations and how the committee is valuable to help know what they are and which ones apply to his agency. Also, it’s difficult to keep track of the actions of different groups such as CASA and CWCCG, which all used to be handled under the same umbrella.
- Members found the last BACWA AIR/BAAQMD meeting to be extremely productive.

**Proposals for meetings in coming year**

- In FY 2013/2014, BACWA AIR will have six bimonthly meetings instead of the traditional quarterly meetings. Two of the meetings will occur at a member facility and include a tour of plant specific innovations related to the AIR Committee’s purpose. Two of the meetings will focus on specific technical topics that can be discussed with a subject-matter expert in a round-table forum. One of the roundtables will include the annual meeting with BAAQMD. CH2M HILL will distribute a survey to committee members to get feedback on a topic of interest for the other technical round-table meeting.

**Next BACWA AIR Committee Meeting:** Wednesday, September 18, 2013, at City of Santa Rosa Utilities Facility. AIR members will have an opportunity to see Santa Rosa’s new engines and biosolids composting facility.

Committee Request for Board Action: None

### Highlights of New Items Discussed and Action Items

#### **Update - Changes to SSS WDR Monitoring and Reporting Program**

As of July 11, 2013, the State Water Board executive director had not yet signed the updated Monitoring and Reporting Program (MRP) for the Sanitary Sewer System (SSS) Waste Discharge Requirements (WDR). However, State Water Board staff still anticipates that the effective date of the updated MRP will be September 9, 2013. We also recently learned that a new feature of the updated MRP will be that “No-Spill” reports will be submitted once per quarter instead of once per month. This new feature was pursued by agencies under the State Water Board’s Resource Alignment initiative, and the California Association of Sanitation Agencies (CASA) has been very active in that initiative.

#### **Sewer System Management Plan (SSMP) Updates**

Most Bay Area collection system agencies completed the original version of their SSMP in August 2008 under the Regional SSO program. Since then, the State Water Board’s SSO program (superceding the regional program) requires that SSMPs be updated at least once every five years. Committee members present at the July 11 committee meeting were reminded that if their SSMP was completed in August 2008 and has not been updated within the last five years, the deadline to do so is August 2013. For significant updates, re-certification by the governing board of the agency is required.

#### **New Mobile App for SSOs**

At the July 11 BACWA Collection Systems Committee meeting, Andy Morrison of the Union Sanitary District gave an update on the development of a mobile application (app) for documenting an SSO response. The organizing committee is still looking for funders, and the scope of the mobile app may be adjusted based on commitments received. It is expected that the mobile app will be completed by early 2014. Other parties that have expressed interest in the mobile app, are the State Water Board staff, CWEA, and CSRMA.

#### **“Smart Covers” in Collection Systems**

Also at the July 11 6 BACWA Collection Systems Committee meeting, we had a panel discussion with committee members discussing their experiences utilizing “Smart Covers” and other similar devices that can measure flow, depth, or when a specific flow elevation is reached, within a manhole. The devices can be mounted in the manhole cover, or on the manhole wall. These devices are being used for various applications, including early warning signals for locations with a history of SSOs or surcharged conditions generally.

#### **Name Change for Cal EMA**

Effective July 1, 2013, the California Emergency Management Agency (Cal EMA) has changed its name to the California Office of Emergency Services (Cal OES).

#### **Next Collection System Committee Meeting**

Our next meeting will be held on Thursday, September 12, 2013 from 1:30 – 3:00 PM, at the Boy Scouts facility in San Leandro.

Recycled Water Committee –  
Report to BACWA Board

Recycled Water Committee Meeting on: 7/10/13  
Executive Board Meeting Date:  
Committee Chair: Cheryl Muñoz

**Committee Request for Board Action: None.**

**12 attendees representing 8 BACWA member agencies**

<p><b>Prop 84 Updates</b></p> <ul style="list-style-type: none"><li>• Preliminary Round 2 results are anticipated to be announced in August, with final awards anticipated to be announced in October. A Bay Area grant application package was submitted by ABAG/SFEP in March.</li><li>• DWR has pushed back the Round 3 process to 2014.</li></ul>
<p><b>BAIRWMP Updates</b></p> <ul style="list-style-type: none"><li>• All of the 2013 BAIRWMP chapters have all been sent to the Recycled Water Committee membership for review. The Executive Summary will be available for review in the next few weeks.</li><li>• The complete 2013 BAIRWMP will be available for public review in August. That is the time to submit any additional comments you may have.</li><li>• The Coordinating Committee will review the full Plan at its 9/23/13 meeting.</li><li>• Each agency must adopt the updated 2013 BAIRWMP to be eligible to apply for Round 3 grant funds.</li></ul>
<p><b>Legislation and Regulatory Updates</b></p> <ul style="list-style-type: none"><li>• The WaterReuse Association CA Section's Legislative/Regulatory Committee's communication on legislative and regulatory items/issues should be improved to ensure input and feedback from the membership. The Recycled Water Committee will discuss communication process improvements at the next meeting and submit bulleted recommendations to Martha Davis, the Leg/Reg Committee Chair.</li><li>• AB 803 - Water Recycling Act of 2013. A significant point in bill involves approval of use of hose bibs to water cemeteries supplied with recycled water and the requirement of signage to label that water is nonpotable. The bill will go back to the Senate floor, then the Assembly for concurrence in August.</li><li>• SB 322 - Water Recycling (direct potable reuse), would establish an expert panel to increase public transparency for the development of direct potable reuse regulations. This bill was re-referred to the Assembly's Water, Parks &amp; Wildlife Committee on 7/3/13.</li><li>• AB 145 - Drinking Water (SWRCB). This Bill would take drinking water program authority from CDPH and give it to State Board. This might have undesired consequences for some agencies. A number of agencies would like the Authority given to Cal EPA instead of the SWRCB. The bill passed out of the Senate Health Committee last week. It now goes to the Senate Appropriations Committee.</li><li>• AB 1200 - Recycled Water. Establishes a water recycling pilot project in Sonoma County for the storage of recycled water in agricultural ponds. Four pilot impoundments would be authorized to use recycled water for irrigation to demonstrate that if the impoundments overflow due to rainfall, the downstream water quality is not impaired. Sonoma County Water Agency sponsored the bill. The bill was amended on 7/2/13, and was referred to the Appropriations Committee.</li><li>• AB 119 - Water Treatment Devices. Bill requires point of use water treatment devices to get third parties to validate their health claims. There is a concern that questionable health claims from water softener companies validated by third parties of dubious scientific merit would encourage the implementation of residential self-regenerating water softeners with a deleterious effect on the water reuse industry. This bill was referred to the Appropriations Committee on 7/2/13.</li><li>• SBX7-2 - Water Bond Principles. The bond is not polling well, so administration is pulling back. The bond will be closely tied to the Bay Delta Conservation Plan which will be in draft form in late winter – early spring 2014. The bond issue is expected to be presented to voters in November 2014.</li><li>• AB 1331 – Water Resources. This is a bond measure that would provide \$11.4 billion to fund water supply reliability, water quality, Sacramento-San Joaquin Delta sustainability, watershed conservation and protection, and water recycling projects. It is currently set for the November 4, 2014, statewide general election. This bill is in the Committee of Water, Parks, and Wildlife with no hearing date set.</li><li>• AB 764 - Biocremation Bill. This Bill would issue permits to five biohydrolysis companies for pilot studies. Concerns arise over the possible discharge of this biowaste into the wastewater system and the subsequent use of the wastewater to produce recycled water. Recycled water might be negatively impacted by mental hurdle of consequences of biocremation.</li></ul>
<p><b>Update on BACWA RW Budget</b></p> <ul style="list-style-type: none"><li>• Budget for 2013-14 approved by BACWA Board without formal comment.</li><li>• Budget includes \$10,000 for Salt Nutrient Management Plan template.</li><li>• The contract with Whitley-Burchett &amp; Associates was extended for an additional year to provide assistance with Prop 84/BAIRWMP activities.</li><li>• Administrative assistance for the Committee will be provided by Lorien Fono or Kimberlee West through Patricia McGovern Engineers.</li></ul>

**Announcements/Agency Updates**

- The Recycled Water Landscape Guide will be distributed for review in the next few weeks.
- No status update on On-line Supervisor Training.
- BACWA monthly newsletter will publish RW articles. Any noteworthy items should be sent to Cheryl.

**Next BACWA Recycled Water Committee Meeting:** August 7th, 2013, from 10:00 am to 12:00 pm, 2nd Floor Small Training Room at EBMUD Headquarters.

**NUTRIENTS:** Completed a variety of tasks and activities associated with BACWA's interests on nutrients and collaborating with the Water Board including:

- participated in an interview with the governance structure facilitator to present BACWA's view on nutrient governance;
- worked with BACWA members and consultants on organizing a Nutrient Technical Symposium for the BACWA membership;
- organized a special board meeting to discuss the benefits of BACWA participation in a grant proposal from EBMUD on approaches to reducing nitrogen at wastewater treatment plants;
- collaborating with the Water Board on outreach to the Delta Stewardship Science Council on the governance structure;
- planned and conducted a Governance Task Force meeting with the Water Board to further progress on finalizing and implementing the governance structure;
- developed and administered a survey of the BACWA membership to ascertain concerns and preferences on nutrient watershed permit;
- worked with SFEI scientists in development of scopes of work for the second major contract for FY 14 studies.

**BACWA BOARD MEETING:**

- Worked with the AED in preparing for the July monthly BACWA Board including reviewing the agenda with the chair.
- Attended the June monthly meeting, made presentation on key activities and noted action items requiring follow-up.
- Continuing to track all action items to completion.

**ASC/SFEI:** Participated in conference calls regarding the ASC/SFEI Executive Committee and Governance Committee activities.

**PERMITS COMMITTEE:**

- Worked with the RPM to develop a report to the Water Board on value of historical acute toxicity testing.
- Worked with RPM on the review of Tentative Orders and drafted a comment letter on the SFPUC TO.
- Discussed the SFPUC Tentative Order with the BACWA attorney specific to key issues that may be precedent setting on future permits.

**AIR COMMITTEE:** Coordinated with the California Wastewater Climate Change Group (CWCCG) program manager to arrange a high level overview of air regulations that may impact the BACWA membership. This is scheduled for the August BACWA Board meeting.

**BAPPG:** Approved various funding requests in accordance with the BAPPG annual Workplan.

**FINANCE:** Presented options for funding additional activities associated with the BACWA Rate Survey.

**ORGANIZATIONAL EFFORTS:**

- Coordinated with outside consultant under contract to upgrade the BACWA email and calendar functions.
- Began preliminary preparation for the annual BACWA retreat by developing a list of issues to be prioritized for the retreat.
- Coordinated with Water Board staff on their attendance at the BACWA Pardee retreat.

**ADMISTRATION:**

- Signed off on invoices, reviewed correspondence, prepared for upcoming Board meeting, responded to inquiries on BACWA efforts, oversaw updating of web page and provided general direction to BACWA staff.
- Discussed benefits of BACWA membership with Cambria Community Services District who had inquired about BACWA membership following a recommendation from the SWRCB.
- Provided written report of avoidance of conflicts of interest associated with previous employment and current elected position.
- developed a rating form and listing of key accomplishments for use by the Board in the annual conduct of the Executive Director's performance.

**BAY PLANNING COLATION:** Coordinated with the ED of the BPC on planned upcoming seminars and briefings including potential speakers.

**MISCELLANEOUS MEETINGS/CALLS:**

- Coordinated with CASA on issues of mutual interest.
- David Senn on several nutrient issues.
- Brian Campbell on Prop 50 and Prop 84.
- BACWA chair on several items that arose during the month.
- Water Board staff on coordinating the nutrient activities.
- Other misc calls and inquiries regarding BACWA activities.

Attachments:

- 1) Status on Action Items from June 27, 2013 BACWA Executive Board Meeting
- 2) BACWA Board Calendar (outline of upcoming meeting agenda items) - BODCAL

**June 27, 2013 BACWA Board Meeting  
Action Items**

<b>Number</b>	<b>Subject (Lead)</b>	<b>Task</b>	<b>Deadline</b>	<b>Status</b>
2013.06-60	Pardee Technical Seminar (ED/AED)	Add discussion of Technical Consultant Solicitation Process to the agenda.  Investigate Bruce's availability on 10/23 or 10/24.	7/25/2013	Completed (Added to Bodcal)  Pending
2013.06-61	BPC's Workshops (ED)  (ED/B. Yerrapotu)	Contact John Coleman to suggest inclusion of resource recovery on Energy & Water Nexus summit agenda.  Investigate availability of Melody Tovar, Tim Potter, Ben Horenstein, or Lorien Fono to serve as panel member for upcoming stormwater seminar.	7/25/2013	Completed  Pending
2013.06-62	ASC/SFEI Board Representation (ED/AED)	Include discussion of Sacramento Regional representative on July 25, 2013 BACWA meeting agenda.	7/25/2013	Completed
2013.06-63	EBMUD EPA Sidestream Treatment Grant (ED/AED/Board)	Schedule special meeting to consider BACWA and individual agency support.	6/29/2013	Completed
2013.06-64	SFPUC Permit (ED)	Review with BACWA legal counsel	7/25/2013	Completed
2013.06-65	Consultant Technical Symposium on Nutrients (ED)	Work RPM, B. Horenstein, B. Yerrapotu and consultant to revise agenda, confirm speakers, and notify members.	9/4/2013	Ongoing
2013.06-66	Nutrient Watershed Permit (ED)  (Permits CMTE Chair)	Survey BACWA members.  Compile and analyze survey results.  Discuss next steps at Permits Committee meeting and provide feedback to ED.	7/25/2013  8/29/2013  8/29/2013	Completed  Pending  Pending
2013.06-67	Nutrients – Sac Regional (RPM)	Circulate Bob Seyfried presentation to Board and consider including on July Board meeting agenda.	7/25/2013	Completed



## Action Items Remaining from Previous BACWA Executive Board Meetings

<b>Number</b>	<b>Subject (Lead)</b>	<b>Task</b>	<b>Deadline</b>	<b>Status</b>
2013.05 -59	Board Meeting Schedule (AED)	Work with SFPUC and EBMUD to schedule 2014 meeting dates, alternating locations.	7/25/2013	Pending
2013.05 -58	Orinda Water Board/BACWA Mid- Year Meeting (ED)	Schedule mid-year meeting to take place at Orinda for the San Francisco Regional Water Board staff and BACWA Board.	3/1/2014	Completed (Added to Bodcal)
2013.05 -56	SSO Enforcement Options (ED) (Monica Oakley)	Draft scope of work for ED review.	7/25/2013	Pending
2013.05 -46	Weights and Measures FOG Manifest Regulations (Permits CMTE Chair)	Provide update to BACWA members via the e-newsletter.	7/25/2013	Completed

*February 2013 – Present: 62 of 67 Action Items completed.*

## Board Calendar thru Dec 2013

*As of Monday, July 22, 2013 at 1:08 PM*

DATE	ASSIGNMENT	STATUS NOTES
8/29/2013 Monthly Board Mtg <b>Items due: 8/15</b>  Connor; Pagano; Horenstein; Ervin; Swanson  Williams; Fono; Gunnell	<b><u>Consent</u></b> Previous Board Meeting Minutes (AED) Monthly Treasurer's Report (EBMUD Accounting) <b><u>Reports</u></b> Committee Reports (Committee Chairs) Board Reports (Executive Board) ED Report (ED) RPM Report (RPM) Chair/ED Authorizations (AED)	
	<b><u>Other Business: Authorizations</u></b>	
	<b><u>Other Business: Discussions</u></b> Pardee Technical Seminar Planning (ED) Arleen Navarret Award - Solicitation (AED) BAPPG Annual Prioritization/Planning (A. Roa) ReNUWIt Update (B. Horenstein/ M. Connor)	
9/26/2013 Monthly Board Mtg <b>Items due: 9/19</b>  Connor; Pagano; Horenstein; Ervin; Swanson  Williams; Fono; Gunnell	<b><u>Consent</u></b> Previous Board Meeting Minutes (AED) Monthly Treasurer's Report (EBMUD Accounting) <b><u>Reports</u></b> Committee Reports (Committee Chairs) Board Reports (Executive Board) ED Report (ED) RPM Report (RPM) Chair/ED Authorizations (AED)	5m  40m
	<b><u>Other Business: Authorizations</u></b>	
	<b><u>Other Business: Discussions</u></b> Pardee Technical Seminar Planning (ED) Arleen Navarret Award - Selection Process (AED) Annual Member Meeting January 2014 (ED) Regulatory Issue Matrix Update Frequency (RPM/ED) FOG White Paper (Yerrapotu/Horenstein) BAPPG Pollutant Prioritization (Karri Ving)	
10/23 – 10/25 Pardee Technical Seminar <b>Items due: 10/16</b>  Connor; Pagano; Horenstein; Ervin; Swanson  Williams	<b><u>Consent</u></b> NONE <b><u>Reports</u></b> Board Reports (Executive Board) ED Report (ED) RPM Report (RPM)	<i>No Board Actions Permitted</i>
	<b><u>Other Business: Authorizations</u></b> NONE	<i>No Board Actions Permitted</i>
	<b><u>Other Business: Discussions</u></b> Finance - Consideration of restructuring BACWA Special Programs Finance – Reserve Funds Finance – Member Dues Structure Committee Structure and Funding BACWA Policies and Procedures Update	

DATE	ASSIGNMENT	STATUS NOTES
	<ul style="list-style-type: none"> <li>Contracting Policy</li> <li>Consultant Solicitation Process</li> </ul>	
11/22/2013 Monthly Board Mtg <b>Items due: 11/15</b>  Connor; Pagano; Horenstein; Ervin; Swanson  Williams; Fono; Gunnell	<p><b><u>Consent</u></b>            Previous Board Meeting Minutes (AED)            Monthly Treasurer's Report (EBMUD Accounting)            Annual Audit Report (EBMUD Accounting)</p> <p><b><u>Reports</u></b>            Committee Reports (Committee Chairs)            Board Reports (Executive Board)            ED Report (ED)            RPM Report (RPM)            Chair/ED Authorizations (AED)</p> <p><b><u>Other Business: Authorizations</u></b></p> <p><b><u>Other Business: Discussions</u></b>            Arleen Navarret Award - Recipient (AED)            Annual Member Meeting January 2014 (ED)</p>	10 m <i>plus previous month (Sept2013)</i> <i>plus previous month (Aug2013)</i>  40m
12/20/2013 Monthly Board Mtg <b>Items due: 12/13</b>  Connor; Pagano; Horenstein; Ervin; Swanson  Williams; Fono; Gunnell	<p><b><u>Consent</u></b>            Previous Board Meeting Minutes (AED)            Monthly Treasurer's Report (EBMUD Accounting)</p> <p><b><u>Reports</u></b>            Committee Reports (Committee Chairs)            Board Reports (Executive Board)            ED Report (ED)            RPM Report (RPM)            Chair/ED Authorizations (AED)</p> <p><b><u>Other Business: Authorizations</u></b></p> <p><b><u>Other Business: Discussions</u></b>            Annual Member Meeting January 2014 (ED)            Budget Planning for 2014-15</p>	5m  40m

**CURRENTLY UNSCHEDULED AND SIGNIFICANT**

- Approval of Annual Report FY12 & FY13
- Defining BACWA Priorities/Revisit Strategic Plan
- BACWA Membership Engagement Opportunities
- Tech Seminar/Workshop: CCCSD Cogen explosion, SFPUC force main leak and repair, and BACWA member pilot plants.
- Volumetric Pricing
- Chlorine Residual Analyzer Investigation
- Suggestions for Guest Speakers

**UPCOMING UNSCHEDULED FOR 2014**

- Finance Committee (Mike Connor / Laura Pagano): BACWA/CBC Budget & Workplan FY 2014-15
- Strategy Development for Triennial Review (Permits Committee/Board)
- Orinda mid-year Joint Meeting (March 2014)

**BOARD COMMITTEES WITH NO MEETINGS CURRENTLY SCHEDULED**

- Ad Hoc Conflict of Interest Committee (Mike Connor / Laura Pagano)



**June 22 - July 19**

Prepared for the July 25, 2013 Executive Board Meeting

---

**DRAFT PLAN FOR TOXICITY ASSESSMENT AND CONTROL:** Lila Tang requested a report summarizing history of acute toxicity in Region 2 to provide support for dropping acute toxicity testing when the plan is adopted. Submitted first draft *Review of Acute Toxicity Testing by San Francisco Bay Municipal Dischargers* to toxicity workgroup for review on June 27. Updating memo based on Dave Williams' comments to incorporate EBMUD's experience with carbon dioxide interference, and will send out memo for second round of review before the end of July.

**STATE BOARD REALIGNMENT:** Both the proposed Permit Fee Increases and the next steps on the Resource Alignment Initiative will be scheduled for consideration at the September 24th SWRCB meeting

**BACWA BULLETIN:** Drafted June BACWA Bulletin.

**NUTRIENT STUDIES AND GOVERNANCE:** Reviewed BACWA contract with SFEI for FY14. Will work with ED and SFEI to track progress of deliverables. Attended 6/27 meeting with facilitator to set up Governance structure.

**COMMITTEE SUPPORT –** Drafted agenda for Permits committee meeting, which was cancelled. Attended AIR committee meeting and drafted Board Report for committee chair review. Another PME engineer attended Recycled Water Committee meeting and provided draft Board Report for committee chair review.

**MEETINGS ATTENDED:** Governance meeting (7/27), AIR Committee (7/17).



## CHAIR / EXECUTIVE DIRECTOR AUTHORIZATION REQUEST

FILE NO.: 12,819

DATE: July 17, 2013

**TITLE: Zentraal Amendment 1 for Prop 84 Project Tracking/Reporting Software Development and Support**

### RECOMMENDED ACTION

BACWA Executive Director authorization to amend agreement with Zentraal to extend the termination date to June 30, 2014 to continue Prop 84 project tracking/reporting software development and support.

### SUMMARY

Under this contract Zentraal will continue work to develop web-based tracking and reporting templates for Prop 84 projects to help BACWA comply with the State's grant conditions and record retention requirements. This work is carried out under the supervision of Brian Campbell and Paul Gilbert-Snyder of EBMUD.

This amendment will extend the contract termination date to June 30, 2014 to allow for the original scope of work to be completed.

### FISCAL IMPACT

Funds have already been allocated to this agreement from fiscal year 2012-13, and no new funds are being requested. This work is funded by and is included in the Prop 84 budget.

### ALTERNATIVES

N/A

#### *Attachments:*

1. 12,819 Zentraal Amendment 1



## BACWA CHAIR / EXECUTIVE DIRECTOR AUTHORIZATION REQUEST

FILE NO.: 13,055

DATE: July 2, 2013

**TITLE: JT Litho to Support BAPPG's Got Ants Campaign**

### RECOMMENDED ACTION

Executive Director authorization of payment for services from JT Litho in an amount not to exceed \$250.00 for BAPPG Got Ants Campaign funded by BAPPG FY 2012-13 budget.

### SUMMARY

This work provides support for the Bay Area Pollution Prevention Group's 'Got Ants' outreach campaign, specifically providing funds for the Print Materials 5x7 cards production portion of the Scope of Work.

### FISCAL IMPACT

This item will be funded by the BAPPG 2013 Emerging Issues budget line item. Sufficient funds are available for this work.

### ALTERNATIVES

No other alternatives were considered as the BACWA contracting policies authorize a sole source selection process for contracts under \$50,000.

#### *Attachments:*

1. Invoice
2. Scope of Work



## BACWA CHAIR / EXECUTIVE DIRECTOR AUTHORIZATION REQUEST

FILE NO.: 13,061

DATE: July 5, 2013

**TITLE: Adammer, LLC Contract for BAPPG Maintenance of Baywise.org Website**

### RECOMMENDED ACTION

Executive Director authorization for an agreement with Adammer LLC in an amount not to exceed \$4,999 for maintenance and support of the Baywise.org website funded by BAPPG FY 2013-14 budget to be completed by June 30, 2014.

### SUMMARY

Baywise.org is a website that has been jointly-funded for many years by BACWA and BASMAA. The BAPPG uses this website to support regional outreach projects and campaigns. This contract will allow Adammer to add, modify and/or delete existing Baywise.org content, as instructed by BAPPG's Project Managers, to support BAPPG campaigns. As well, Adammer will be asked to hold a training class for interested BAPPG members to learn how to post new content to Baywise.org to allow BAPPG to add basic content without the need for external consultant support.

This work will be carried out under the supervision of Melody LaBella, CCCSD and Karin North, City of Palo Alto.

### FISCAL IMPACT

This item is included in the Fiscal Year 2013-2014 BAPPG budget and workplan, line items BAPPG Maintenance of BAPPG Website, which has been approved by the BACWA Executive Board. There are sufficient funds in the BAPPG account to pay for this project.

### ALTERNATIVES

No other alternatives were considered as the BACWA contracting policies authorize a sole source selection process for contracts under \$50,000. As well, since this firm designed the Baywise.org website and is very familiar with its structure, there is great efficiency in continuing to use them for this work.

#### *Attachments:*

1. Scope of Work

### **Adammer Scope of Work**

Work under this contract will include maintenance and development of new content for the [www.Baywise.org](http://www.Baywise.org) website to support BAPPG regional campaigns throughout the 2013/2014 fiscal year, on an as-needed basis. In addition, it is anticipated that Adammer will conduct a training class (either in-person or remotely) for interested BAPPG members on how to post basic content to the [www.Baywise.org](http://www.Baywise.org) website.

All work conducted under this contract will be performed on a time and materials basis, in accordance with the attached fee schedule.



**From:** David Senn [<mailto:davids@sfei.org>]  
**Sent:** Thursday, July 11, 2013 5:13 PM  
**To:** David R. Williams; Mike Connor  
**Cc:** Emily Novick  
**Subject:** Re: BACWA Permits Committee - Nutrient 13267 update

Hi Dave and Mike

I do think it's valuable for this data to be dug into. My only hesitations about SFEI doing it in the near term are related to...

\* time required to compile all the files into a single database, and for data QA/QC (40 different plants reporting, human error transferring data from lab output to template...). Maybe someone else has already done the compilation, and the QA/QC?

\* creating the expectation that we will fully incorporate this new data into the RMP loading study, since that would require redoing a large number of figures, tables, etc. and discussing any differences that are apparent after the second 6 months of data became available. Our plan has always been to stop with the first two quarters of data, and we don't have the budget in that project. Beyond that, I doubt interpretations will change much, and that the effort would be difficult to justify at this point.

With it still being mostly just Emily and me for at least the next few months, we have pretty full plates.

But I have a suggested approach...

1. We finalize the current draft loading study without that data.
2. We do a loading study supplement/update. This could look at one or two things...
  - 2.a. In the next 1-2 months, SFEI analyzes/summarizes the data from a subset of the POTWs, focusing on differences/similarities between N and P species and particulate/dissolved. We then look at the suite of parameters included in models (e.g., Delft), and the Bay POTW effluent N and P species and particulate vs. dissolved. I'd recommend that we subcontract with HDR for some of Jim Fitzpatrick's time, in an advisory way, e.g. as we delve into the discussion of trade-offs of cutting/keeping some parameters from a modeling perspective.
  - 2.b. (In terms of efficiency, I'd suggest we delay this until e.g. Jun2014 when Year 2 data is available, and when we will have some hydrol model output and Delta loads model estimates from the IEP project). As a second priority, we update any relevant figures/tables from the loading study. We then write a short section describing any differences in observations/interpretations between the 6 month and 12 month datasets. This would be the first of what would likely be multiple updates over the coming years as additional data becomes available.
3. Funding it...We could ask RMP to support 2a with some discretionary additional funds (small, 10-15k).

Something else to consider...

It also seems like a pretty valuable dataset from the standpoint of "plant operation" across a wide array of treatment technologies. Do you think BACWA has an interest in funding the HDR wastewater group to do a quick year-end summary from this perspective?. If so, we could gain some efficiencies...whichever group takes the first crack at organizing/summarizing/plotting the data could pass on the database and plots/table to the second group.

Regards,  
Dave



## BACWA EXECUTIVE BOARD ACTION REQUEST

AGENDA NO.: 10.a.iii.

FILE NO.: 13,064

MEETING DATE: July 25, 2013

### TITLE: Authorize Agreement with SFEI for Nutrients Strategy Support

MOTION

RESOLUTION

DISCUSSION

### ACTION UNDER CONSIDERATION

Authorize execution of an agreement with the San Francisco Estuary Institute (SFEI) for San Francisco Bay Nutrient Strategy Support, in an amount not to exceed \$330,000 to fund Tasks 1.1 – 1.3 and Task 7 in the Proposed Scope of Work for Fiscal Year 2014.

### SUMMARY

At the June 25, 2013 BACWA meeting the Executive Board approved an agreement with SFEI in the amount of \$355,000 to fund items outlined under Task 2.2 – 2.4 in the attached scope of work, though it was later determined that only \$345,000 was needed and therefore an agreement for a not to exceed amount of \$345,000 was executed. This contract will commit the remaining funds allocated for this program in the fiscal year 2013-14 CBC budget and workplan, in the amount of \$330,000, to support SFEI's work on Tasks 1.1 – 1.3 and Task 7 in the attached scope.

### FISCAL IMPACT

This project is included in the CBC budget and workplans for fiscal year 2014, and funds are available in the CBC account.

### ALTERNATIVES

Though the BACWA Contracting Policy stipulates a request for proposal process for contracts with a total value greater than \$100,000, it is recommended that the Board authorize this agreement as an exception to the policy. A sole source selection process for this agreement ensures continuity of expert support for ongoing San Francisco Bay Nutrient Strategy development efforts that were initiated by the San Francisco Estuary Institute (SFEI) in February 2012. Additionally, SFEI is the only independent scientific body that is currently capable of conducting this work.

### Attachments:

1. SFEI SF Bay Nutrient Strategy Support Proposed Scope of Work FY 2014

---

## Proposed Scope of Work – FY2014

### I. Introduction

San Francisco Bay has long been recognized as a nutrient-enriched estuary, but one that has exhibited resistance to some of the classic symptoms of nutrient overenrichment, such as high phytoplankton biomass and low dissolved oxygen. However, recent observations suggest that the Bay's resistance to high nutrient loads is weakening. The combination of high nutrient concentrations and changes in environmental factors that regulate the Bay's response to nutrients has generated concern about whether the Bay is trending toward, or may already be experiencing, nutrient-related impairment.

To address growing concerns about SFB's changing response to nutrient loads, the San Francisco Bay Regional Water Quality Control Board worked collaboratively with BACWA and other stakeholders to develop the San Francisco Bay Nutrient Management Strategy, which calls for a range of activities to develop the scientific foundation that will allow for well-informed management decisions. An initial activity within the Nutrient Strategy was to develop a conceptual model for nutrient load-response in the Bay, and identify critical data and conceptual gaps. That draft report, developed with input from a group of regional scientists and funded by the RMP, was recently completed (Senn et al., 2013) and it identified high-priority science questions, most of which fall under one or more of the following broader questions:

1. Do current trends of increasing biomass (in particular in Lower South Bay and South Bay) indicate that conditions are moving along a trajectory toward nutrient-related impairment?
2. Are nutrients causing or contributing to impairment due to changes in phytoplankton community composition?
  - 2.1. Harmful algal blooms?
  - 2.2. Shifts in assemblage toward a food resource that poorly supports the food web?
3. Is the low dissolved O<sub>2</sub> that is commonly observed in Bay shallow margin habitats (sloughs, wetlands) causing impairment, and is the severity or duration of low DO due in part to elevated nutrients?
4. Under current nutrient loads, could impairment readily develop under plausible future scenarios?
5. How do nutrient loads from different sources contribute to ambient concentrations in different locations in the Bay?
6. If impairment is occurring, or is likely to occur in the future, what load reductions will be effective at mitigating or preventing impairment?

The conceptual model report made two broad recommendations

1. Develop a science plan(s) for SFB's subembayments that targets the highest priority management and science questions
2. Develop and implement an integrated program that combines observation/assessment, prediction of ecosystem response, and process-level studies that combined inform impairment assessment and decisions about how to best manage nutrients
  - 2.1. Develop a regionally-administered and sustainably-funded nutrient monitoring program
  - 2.2. Develop hydrodynamic, nutrient cycling, and ecosystem response models
  - 2.3. Carry out special studies to address key knowledge gaps about mechanisms that regulate ecosystem response, and inform whether or not impairment is occurring

In developing proposals to BACWA and the RMP for funding during FY2014 and CY2014, respectively, we targeted high-priority science questions and recommendations identified in the conceptual model report, which are also happen well-aligned with the goals and approach laid out in the Nutrient Strategy. Furthermore, a large number of science and monitoring activities are on-going in San Francisco Bay, funded by various entities (Figure 1), and the proposed set of projects to BACWA and the RMP target current and important gaps in scientific studies and nutrient program development. Nearly half (\$320,000) of the RMP proposed budget is being requested for hydrodynamic and water quality model development. For that reason, no BACWA funds are being requested for modeling in FY2014. Instead, the majority of funding being requested from BACWA is related to monitoring program development (including special studies and data analysis) and synthesis of existing information/data analysis to inform science plan development.

Within the framework of the San Francisco Regional Water Quality Control Board and the Bay Area Clean Water Agencies (BACWA) cooperative effort on nutrients in San Francisco Bay, this proposed scope of work will support implementation of the nutrient strategy. The scope of work consists of 3 main tasks (with task numbers based on the overall numbering scheme Figure 1):

Task 1: Science prioritization and special studies

Task 2: Monitoring Program Development

Task 7: Program Coordination and Management

This work will be carried out by the San Francisco Estuary Institute (SFEI), working with regional collaborators and technical advisors.

FY/CY 2014  
Amounts in \$1000s

		BACWA	RMP	IEP	USGS	SFWCA	SWRCB	TOTAL
<b>Task 1</b> Science prioritization and special studies	Task 1.1 Lower South Bay Synthesis	115						115
	Task 1.2 Suisun Synthesis II	85						85
	Task 1.3 Science Plan	30						30
	Task 1.4 Mechanistic special studies			330*		500*		830
<b>Task 2</b> Monitoring program development	Task 2.1 Ongoing Bay-wide monitoring		170	500*	700*			1370
	Task 2.2 Moored sensor pilot studies	150	215					365
	Task 2.3 Comm. comp. pilot study	120						120
	Task 2.4 Program Development	75	50				25	150
	Task 2.5 Stormwater monitoring		35					
<b>Task 3</b> Assessment framework development	Task 3.1 Assessment framework development						200	200
<b>Task 4</b> Model development and modeling	Task 4.1 Complete tactical plan		45					45
	Task 4.2 Refine hydrodynamic model		100					100
	Task 4.3 Develop phyto/nutrient model		80					80
	Task 4.4 Refine and apply phyto/nutrient model		100					100
	Task 4.5 Refining stormwater estimates		50					50
	Task 4.6 Nutrient Modeling in the Delta			180				180
<b>Task 5</b> Load estimation	No proposed work in FY2014							
<b>Task 6</b> Control strategy identification and testing	No proposed work in FY2014							
<b>Task 7</b> Program coordination and management	Task 7.1 Science oversight and coordination	75	20					95
	Task 7.2 Technical review	25						25
<b>TOTAL</b>		675	865 <sup>1</sup>	1010	700	500	225	~3900

<sup>1</sup> Includes \$175k in 2012/2013 funds applied to RMP modeling tasks

**Figure 1** Estimated nutrient expenditures (1000s \$) in CY/FY 2014 in San Francisco Bay across a range of stakeholders and agencies (BACWA fiscal year starts in July, RMP follows the calendar year). Estimates for BACWA and RMP are proposed projects, pending approval. The majority of work being carried out under the columns for BACWA, RMP, and SWRCB are closely aligned with the Nutrient Strategy, as are “Nutrient Modeling in the Delta”, and ~200k in the row “Mechanistic special studies”. The “\*” estimates for USGS, IEP, and SFCWA are highly uncertain.

**Table 1** Overall Proposed Budget (1000s \$)

<b>Task</b>	<b>BACWA FY 2014</b>
<i>Task 1.1 Lower South Bay Synthesis</i>	115
<i>Task 1.2 Suisun Bay Synthesis II</i>	85
<i>Task 1.3 Science Plan Development</i>	30
<i>Task 2.2 Moored sensor program development</i>	150
<i>Task 2.3 Improved method for phytoplankton community composition</i>	120
<i>Task 2.4 Nutrient Monitoring Program Development</i>	75
<i>Task 7.1 Science oversight and coordination, and project management</i>	75
<i>Task 7.2 Coordinate technical review</i>	25
<b>TOTAL</b>	675



---

## II. Tasks and Deliverables

Note task numbers follow those laid out in Figure 1. Some tasks may not

### Task 1. Science Prioritization and Special Studies

#### *Task 1.1 Lower South Bay Synthesis*

**Budget:** \$115,000

The Lower South Bay (LSB) subembayment (south of the Dumbarton Bridge) receives among the highest area-normalized nutrient loads in San Francisco Bay. Due to its shallow environment (i.e., smaller volume) and relatively weak exchange with the larger Bay, LSB also has the highest inorganic nitrogen and phosphorous concentrations of all of the Bay's subembayments. Baseline phytoplankton biomass concentrations have increased in LSB over the past 15 years, and fall blooms – which had been rare – now occur regularly (Senn et al. 2013). In the recent conceptual model report, LSB was identified as one of the Bay's subembayments most likely to exhibit impairment first, if impairment were to occur, because of its high nutrient loads and recent evidence of changing ecosystem response.

The goal of Task 1.2 is to synthesize the state of knowledge about current conditions in LSB and relevant stations north of the Dumbarton Bridge, and identify priority science questions and data gaps. The report will address the following main issues:

- 1) Evaluation of the mechanisms through which nutrients affect phytoplankton community composition and selection of harmful algal species in estuarine ecosystems: Literature review and application and assessment of potential roles in SFB.
- 2) Long-term trends in nutrient loads and concentrations in Lower South Bay
- 3) Synthesis/analysis of long-term data on factors that influence ecosystem response in LSB: Suspended sediment, clam abundance, stratification/salinity
- 4) Analysis of data on major ecosystem responses in LSB
  - a) Dissolved oxygen: spatial/temporal variability, site-specific considerations, focus on both shallow habitats and deep channel. Mechanistic/quantitative interpretation, to the degree possible with existing data.
  - b) Phytoplankton biomass and community composition, and occurrence of potentially harmful species
  - c) Habitat and fisheries assessment
- 5) Data gaps and key science questions

Schedule & Deliverables for Task 1.1

The table below includes joint BACWA and RMP deliverables.

1.1.a Draft Lower South Bay Synthesis	Dec 2013
1.1.b Final Lower South Bay Synthesis	Mar 2014

Budget for Task 1.1

Data gathering, data analysis, report preparation	\$115,000
<b>TOTAL</b>	<b>\$115,000</b>

An additional \$40,000 of FY2013 funds will also be applied to the Lower South Bay Synthesis.

**Task 1.2 Suisun Synthesis II**

**Budget:** \$85,000

Similar to LSB, Suisun Bay was identified in the conceptual model report as one of the Bay's subembayments most likely to exhibit impairment first, if impairment were to occur. Both the Delta and Suisun Bay have been identified as a multi-impacted system (landuse changes, heavily managed flow, contaminant loads) in which ecosystem condition has been highly degraded. Nutrient loads to Suisun Bay have been proposed as one factor contributing to impairment; in particular some studies have argued that elevated concentrations of nutrients and anthropogenically altered relative abundances of nutrient forms are adversely affecting Suisun Bay and Delta food webs by, among other things, altering phytoplankton community composition. In a first synthesis for Suisun Bay, we primarily focused on trends in ammonium concentrations and loads in Suisun Bay, and the hypothesized links between elevated ammonium and ecological impairment in Suisun Bay (i.e., inhibited primary production, toxicity to copepods). In Task 1.2, we will focus on other nutrient forms, factors that regulate response, and other potential impairment pathways (e.g., changes in phytoplankton composition). The report will address the following main issues:

- 1) Analysis of long-term trends (1975-present) in ambient forms of nutrients within Suisun Bay (nitrate, dissolved inorganic nitrogen, total nitrogen, phosphate, total phosphorous, N:P, NH<sub>4</sub>:NO<sub>3</sub>); nutrient loads from the Delta and local POTWs; and, if data permits, mass balance to evaluate fate/losses of totalN, totalP, etc.



- 2) Synthesis/analysis of long-term data on factors that influence ecosystem response in Suisun Bay: suspended sediment, clam abundance, flow, stratification
- 3) Time series and spatial analysis of phytoplankton community composition in Suisun Bay and the Delta to explore what factors most strongly explain changes in composition (DWR/IEP data, 1975-present, 3 stations in Suisun, 1 San Pablo, >5 in the Delta, potentially augmented by other data from USGS). Changes in composition will be statistically evaluated relative to changes in factors that regulate system response (e.g., clams, nutrients, flows, T) to explore potential associations.
- 4) Data gaps and key science questions

Schedule & Deliverables for Task 1.2

The table below includes joint BACWA and RMP deliverables.

1.2.a Draft Suisun Synthesis II	Apr 2014
1.2.b Final Suisun Synthesis II	Jun 2014

Budget for Task 1.2

Data gathering, data analysis, report preparation	\$85,000
<b>TOTAL</b>	<b>\$85,000</b>

**Task 1.3 Developing a San Francisco Bay Nutrient Science Plan**

In FY2013, SFEI worked with BACWA to develop a series of draft decision trees that lay out an approach for implementing the Nutrient Strategy, including work flow and interactions among major work elements, and identify critical decision junctures. The decision trees are provide a framework/skeleton for implementing a science plan. A detailed Nutrient Science Plan still need to be developed that identifies and prioritizes among major science questions that will most effectively and efficiently inform nutrient management decisions. Developing and vetting a Nutrient Science Plan requires input from the scientific community, regulators, and stakeholders. The conceptual model report presents an initial set of priority science questions and data gaps that could inform Science Plans, both Bay-wide and for individual subembayments. In some ways the synthesis reports (LSB, Suisun I and II) and the data gaps they identify will point to additional subembayment-specific questions or gaps. In this sense, the conceptual model report and the syntheses will serve as the foundational material upon which a science plan would be based. However, further prioritization is needed.

The approach for the Nutrient Science Plan development will involve assembling a science plan working group that consists of regulators, stakeholders, and technical advisors. The science plan development will involve a combination of ‘science decisions’ and ‘policy decisions’, and would be an iterative approach to

- Prioritize among management questions and associated science questions
- Lay out a logical sequence of studies that address priority questions, and related milestones, timelines, and estimated costs

Schedule & Deliverables for Task 1.3

The table below includes joint BACWA and RMP deliverables.

1.3.a Draft Nutrient Science Plan	Feb 2014
-----------------------------------	----------

Budget for Task 1.3

Developing a San Francisco Bay Nutrient Science Plan	\$30,000
<b>TOTAL</b>	<b>\$30,000</b>

**Task 2: Nutrient Monitoring Program Development**

[Note Task 2.1 (Figure 1) is On-going Monitoring, and funding for this task is not being requested from BACWA in 2014 ]

**Task 2.2 Moored sensor program development**

**Budget:** \$150,000

**Collaborators:** Jim Cloern (USGS), Raphael Kudela (UCSC), Tara Schraga (USGS)

The conceptual model report recommended developing a moored sensor sub-program that complements the ship-based monitoring program by providing high temporal resolution data for a range of parameters (chl-a, DO, nutrients, turbidity) to, for example, i) identify the onset of events (e.g., large blooms); ii) improve understanding about the processes that influence phytoplankton blooms in order to predict future responses; iii) assess oxygen budgets; and iii) quantify nutrient fate. High temporal resolution data will also be essential for accurately calibrating water quality models. Continuous monitoring with moored sensor systems is feasible for a wide range of water quality parameters. Techniques for some parameters are becoming increasingly well-established and reliable (e.g., salinity, T, turbidity, chl-a, DO, and more recently nitrate), while others are advancing (e.g., phosphate,

ammonium, phytoplankton composition using *in situ* flow cytometry and digital imaging). Moored sensor systems can telemeter data, allowing for near real-time assessment of conditions, which can be used to trigger field sampling or to identify sensor failure or drift.

Compared to Suisun Bay and the Delta, where there are an abundance of moored sensor stations maintained by DWR/IEP, the moored sensor infrastructure is quite limited in San Pablo Bay, Central Bay, and especially Lower South Bay and South Bay. This is particularly true for parameters like chl-a, nutrients, and DO.

The RMP funded a pilot project in 2013 to deploy moored sensors at Dumbarton Bridge. Work is proceeding well on that project and the planned deployment date is July 3.

Task 2.2 proposes to fund the expansion of the moored sensor network in Lower South Bay and South Bay, first by rigorously exploring the best site options for program expansion followed by installation, and would be jointly funded by BACWA and the RMP. The project will develop the moored sensor program fundamentals, through intensive planning and testing at Dumbarton Bridge, including field experiments/calibrations to inform what sensors are actually measuring (e.g., correcting for interferences), best depths at which to place sensors (surface, bottom, both, and for which sensors). It will also develop approaches for data telemetry/visualization/screening, data assimilation/interpretation, and report planning.

Proposed BACWA funding (\$150k) would be directed toward funding moored sensor program development, which will include:

- analysis of existing monitoring data to help optimize placement of moored sensors;
- design and implementation of field experiments for intensive *in situ* calibration and testing of sensor accuracy and precision (e.g., identifying and developing approaches for correcting for interferences), and pilot field deployments to inform final site selection
- analysis and interpretation of data from field experiments
- based on the above work, recommendation of specific program expansion sites in Lower South Bay and South Bay;
- development of beta software for automated data assimilation, initial QA/QC, graphics/visualization, and upload to website for near real-time data viewing on a web-based platform.
- To the extent possible, data from moored sensors in Suisun Bay and the Delta, maintained by DWR/IEP, will also be retrieved in near real-time and uploaded to the beta web platform.

Although the Suisun and Delta sites use similar sensors as those we will use in Lower South Bay and South Bay, there will be differences in the maintenance, calibration, and QA/QC between programs. This is may be a non-trivial caveat, and in the long run would need to be addressed by developing common maintenance, calibration, and QA/QC procedures. The

near-term goal of merging the DWR/IEP data from Suisun Bay and the Delta with South Bay and Lower South Bay sensors is more as a powerful proof-of-concept, aimed at highlighting the feasibility and advantages of coordination, to develop momentum along the path of establishing institutional agreements with IEP/DWR on monitoring. IEP/DWR spend ~\$1.5 mill/yr maintaining the Suisun and Delta sensor network. Implementing a Bay-wide maintenance, calibration, and QA/QC program would cost far less. The IEP Lead Scientist has expressed enthusiasm for the plan, and has agreed to seek broader IEP support and approval.

BACWA funding on this task would be augmented by RMP funding (\$215k) which will be directed toward:

- purchasing equipment for two additional stations for measuring chl-a, pH, DO, turbidity, fluorescent dissolved organic matter, depth, and nitrate (these stations would be in addition to the current Dumbarton Bridge station)
- field logistics (e.g., ship time) for sensor deployment and maintenance, intensive *in situ* calibration studies, and pilot field deployments to inform final site selection; and
- data management.

Schedule & Deliverables for Task 2.2

The table below includes joint BACWA and RMP deliverables.

2.2.a Summary of data analysis and field experiment results, and recommended locations for new sites in South Bay and Lower South Bay (Note: dates may shift depending on BACWA project start)	Draft Apr 2014 Final Jun 2014
2.2.b Beta website presenting near real-time data for up to three RMP-funded sites in LSB and South Bay, and, if possible, DWR/IEP sites in Suisun Bay and the Delta	Jun 2014

Budget for Task 2.2

Personnel support: historic data analysis; field experiment design, implementation, and data interpretation; developing recommendations for new field sites; beta web platform development	\$150,000
<b>TOTAL</b>	\$150,000

***Task 2.3 Improved methods for characterizing phytoplankton community composition and in situ photosynthetic “health” of phytoplankton community***

**Collaborators:** Raphael Kudela (UCSC), Jim Cloern (USGS), Tara Schraga (USGS)

**Budget:** \$120,000

*Task 2.3.1 Pilot Study of methods for phytoplankton community composition*

Determining whether high nutrient levels are contributing to adverse changes in phytoplankton community composition are occurring in SFB – including shifts toward harmful species – as a result of high nutrient levels was identified as a high priority science issue in the conceptual model report. Monitoring phytoplankton community composition is labor intensive and expensive (\$280 per sample), because classic methods employ microscopy for taxonomy and biomass quantification. Phytoplankton composition data in some areas of SFB is therefore severely limited, especially in terms of spatially and temporally intensive information that would allow inferences to be made about the importance of major drivers of composition, including nutrients.

This proposed project will test and calibrate an approach in SFB that allows phytoplankton community composition to be determined more easily and inexpensively by measuring algal pigment abundance. The approach exploits the fact that classes of phytoplankton have distinct pigment profiles; the biomass of each phytoplankton class present in a given sample can be back-calculated from the bulk mixture of pigments through sophisticated data analysis routines (Chemtax). The approach has been applied successfully in other freshwater, marine, estuarine ecosystems, including the Neuse River estuary. Once the method is up and running, pigment analysis costs are ~5 times cheaper than microscopy costs, making it feasible to more systematically explore the factors regulating phytoplankton composition, both through expanded routine monitoring and targeted field investigations.

The project will leverage effort and funding from the USGS, who have been collecting paired microscopy and pigment samples since November 2011. Microscopy work has already been completed on 40 samples. It is expected that microscopy on a total of 65 samples will be completed for cruises through December 2013, and up to a total of 80 samples if work continues through the 2014 spring bloom (total cost to USGS ~\$20,000). However, the pigment analysis has not yet begun, although Kudela’s group at UCSC already has funding to cover the analytical costs.

The proposed funding for this project would support personnel time to complete the pigment measurements, analyze data and calibrate the method, interpret the results, and prepare reports both on the methodology and interpretations of the data. Approximately 80% of the personnel support of Task 2.3 will be directed toward this subtask. Some funding to support additional microscopy work is also being proposed (for analyses beyond the USGS’s standard locations) to obtain information over a wider range of conditions.

*Task 2.3.2 Measuring and interpreting in situ photosynthesis dynamics*

USGS has also been collecting photosynthetic efficiency data along its monthly transects since May 2012. The USGS ship, *R/V Polaris*, has a flow-through water system that pumps water from 1 m below the surface continuously during the cruises, and this water passes through a variety of instruments in the laboratory that continuously record data. One of those instruments, trade name ‘Phytoflash’, measures the phytoplankton community photosynthetic efficiency (in addition to other parameters), which can be considered a measure of their stress level, and how that varies spatially as a function of changing conditions (including changing composition). A write-up of this work, including a discussion of the measurement’s potential relevance for future monitoring, will be included as a section in the technical report. Approximately 20% of the Task 2.3 personnel support will be directed toward this task.

*Schedule & Deliverables for Task 2.3*

The table below includes joint BACWA and RMP deliverables.

2.3.a Protocol for calibrating/validating a pigment-based assessment approach	Dec 2013
2.3.b Draft report on feasibility of pigment-based approach in SF Bay, data interpretations of pigment approach, data interpretations of fluorescence efficiency, and recommendations for SFB monitoring program methods	Apr 2014
2.3.c Final report on interpretations and feasibility and application of pigment-based approach in SF Bay, interpretations and application of fluorescence efficiency approach	Jun 2014

*Budget for Task 2.3*

Personnel support for method development, data analysis, calibration; data interpretation and recommendations	\$115,000
Additional microscopy work for taxonomy (18 samples at \$280/sample)	\$5000
<b>TOTAL</b>	<b>\$120,000</b>

### ***Task 2.4 Nutrient Monitoring Program Development***

**Collaborators:** Jim Cloern (USGS), Martha Sutula (SCCWRP)

**Budget:** \$75,000

Task 2.4 is proposed to be a jointly funded project between BACWA (\$75,000) and RMP (\$50,000), with shared goals, activities, and deliverables.

The conceptual model report pointed to the need to develop the scientific framework for a monitoring program, along with the institutional agreements and funding plan to support the transition of monitoring away from primarily a federally funded program (in anticipation of budget cuts to the USGS) toward a regionally-administered and sustainably funded program. Task 2.4.1-2.4.3 will focus primarily on the science program development, but also allow SFEI staff to play a coordinating role to bring key partners to the table and assist in the institutional and funding planning.

#### *Task 2.4.1 Convene monitoring program working group and advisory team*

A monitoring program working group will be established to guide development of the monitoring program. This group will consist of regulators, stakeholders, and technical experts. Regulator and stakeholder input will play an essential role in monitoring program development, in particular for identifying monitoring program goals, prioritizing program components to meet those goals, and establishing institutional and funding agreements. A monitoring program technical advisory team will also be established to provide guidance to SFEI staff, technical collaborators, and stakeholders on program development. The technical advisory team will consist of regional and national experts that have experience establishing and maintaining monitoring programs. The technical advisory team will meet 2 times in 2014, with electronic exchanges between meetings. The monitoring program working group may meet more frequently (up to quarterly), as needed.

#### *Task 2.4.2 Draft and implement a program development plan*

A major outcome of the meetings with the monitoring program working group and technical advisory team will be a draft monitoring program development plan. This plan will:

- Clearly articulate monitoring program goals
- Lay out an approach for identifying and evaluating different program structures (e.g., specific parameters, spatial and temporal frequency of data collection; balance between ship-based and moored-sensor approaches)
- Identify specific data analysis activities that will be carried out in Task 1.3
- Identify other monitoring programs whose development approach and lessons-learned should be studied
- Recommend pilot studies to test monitoring approaches
- Present goals and an approach for pursuing institutional agreements, exploring funding options, and identifying budgetary constraints.



A draft of this report will be developed at the end Q1 2014, following the first team meeting in 2014. This report will be updated periodically over the course of the year. The report will prioritize work elements for year 1 and beyond. Status updates on work elements will be presented to the working group at meetings, and a year-end progress report will be prepared.

*Task 2.4.3 Data analysis to inform future monitoring program structure*

The long-term science and monitoring efforts in the Bay/Delta provide a nearly 40-year record of water quality and ecological indicators. This data set provides a tremendous historical record that can be quantitatively probed to inform monitoring program design, and help identify which parameters to measure; the spatial and temporal density of sampling required; and the balance between ship-based and moored sensor applications. Analysis and synthesis of existing data was also recommended in the conceptual model report.

With guidance from the technical advisory team and the monitoring program working group team, the program development plan will identify and prioritize data analysis and numerical simulation tasks. Results of these tasks will be reported back to the technical advisory team and monitoring program working group in the form of periodic update presentations and sections to be included in the end of year progress report.

Schedule & Deliverables

2.4.a Minutes and presentations from 2 or more monitoring program working group and advisory team meetings	Jan – Dec 2014
2.4.b Draft program development plan	Mar 2014
2.4.c Annual progress report	Dec 2014

Budget for Task 2.4

Personnel: Coordinating advisory team, data analysis, status updates, and annual progress report	\$75,000
<b>TOTAL</b>	\$75,000 <sup>1</sup>

<sup>1</sup>Additional \$50,000 in support from RMP being proposed for this task.



## Task 7: Nutrient Program Coordination and Management

### Task 7.1 Science oversight and coordination

**Budget:** \$60,000

Proposed funding in this task will be used to support SFEI staff's activities in the area of overall science coordination and program management. As noted in Figure 1, there are a large number of stakeholders and programs involved in nutrient-related work in San Francisco Bay. BACWA-funded nutrient-related activities need to be coordinated with these other efforts to achieve maximum benefit, and to help implement and maintain the "big tent" concept. Task 7.1 also supports costs associated with basic project management, including monthly progress reports and invoices, and contract management.

#### Schedule & Deliverables Task 3.1

7.1.a Presentations and progress up-dates to Nutrient Program steering committee on a to-be-determined basis	Jul 2013 – Jun 2014
7.1.b Monthly progress reports and invoices	Jul 2013 – Jun 2014

#### Budget for Task 7.1

Science oversight and coordination	\$60,000
Project management, invoicing, contracts	\$15,000
<b>TOTAL</b>	<b>\$75,000</b>

### Task 7.2 Coordinate technical review

**Budget:** \$25,000

BACWA and the Water Board have indicated that there needs to be technical review of planning documents and major work products by an external science oversight group. Technical review of other reports may also be needed on an on-going basis. A nutrient program governance structure is currently being developed, and it is expected that the approach to external review will be outlined there. This proposed task and its budget are placeholders in anticipation that some form of external review will begin in FY 2014, with details on actual approach still to come.

#### Schedule & Deliverables Task 7.2

7.2.a To be determined	TBD
------------------------	-----

#### Budget for Task 3.2

Coordinate technical review	\$25,000
<b>TOTAL</b>	<b>\$25,000</b>

### III. Schedule of Deliverables and Budget

#### III.A Deliverables

All dates assume an effective start date of July 1 2013, and will be adjusted depending on actual project start date.

**Table 2** Project Deliverables

Deliverable		Date
<i>Task 1.1 Lower South Bay Synthesis</i>		
1.1.a	Lower South Bay Synthesis - Draft	Dec 2013
1.1.b	Lower South Bay Synthesis - Final	Mar 2014
<i>Task 1.2 Suisun Synthesis II</i>		
1.2.a	Suisun Bay Synthesis II - Draft	Apr 2014
1.2.b	Suisun Bay Synthesis II - Final	Jun 2014
<i>Task 1.3 Science plan development</i>		
1.3.a	Science Plan - Draft	Feb 2014
<i>Task 2.2 Moored sensor program development</i>		
2.2.a	Progress Report: Summary of results from calibration and site-testing experiments, methods recommendations, and recommendations for moored sensor expansion in Lower South Bay/South Bay	Apr 2014
2.2.b	Beta platform for real-time data analysis/visualization	Jun 2014
<i>Task 2.3 Pilot study of phytoplankton community composition methods</i>		
2.3.a	Protocol for calibrating/validating a pigment-based assessment approach	Dec 2013
2.3.b	Draft report on feasibility of pigment-based approach in SF Bay, including recommendations for SFB monitoring program methods	Apr 2014
2.3.c	Final report on feasibility and application of pigment-based approach in SF Bay	Jun 2014
<i>Task 2.4 Nutrient Monitoring and Assessment Program Development</i>		
2.4.a	Assemble monitoring program advisory team and minutes/presentations from at least 2 meetings	Oct 2013- Dec 2014

2.4.b	Draft program development plan	Mar 2014
2.4.c	Progress Report #1: Analysis of long-term monitoring data, and initial recommendations	Jun 2014
2.4.d	Progress Report #2: Update on monitoring program development	Dec 2014
<i>Task 7.1 Science oversight and coordination</i>		
7.1.a	Presentations and progress updates to Nutrient Program steering committee on a to-be-determined basis	Jul 2013 – Jun 2014
7.1.b	Monthly progress reports and invoices	Jul 2013 – Jun 2014
<i>Task 7.2 Coordinate technical and peer review</i>		
7.2.a	To be determined	TBD

**III.B Budget**

**Table 3** Overall Proposed Budget (1000s \$)

<b>Task</b>	<b>BACWA FY 2014</b>
<i>Task 1.1 Lower South Bay Synthesis</i>	115
<i>Task 1.2 Suisun Bay Synthesis II</i>	85
<i>Task 1.3 Science Plan Development</i>	30
<i>Task 2.2 Moored sensor program development</i>	150
<i>Task 2.3 Pilot study of phytoplankton community composition methods</i>	120
<i>Task 2.4 Nutrient Monitoring Program Development</i>	75
<i>Task 7.1 Science oversight and coordination, and project management</i>	75
<i>Task 7.2 Coordinate technical review</i>	25
<b>TOTAL</b>	675

**Table 4** Approximate break-down between internal and external allocations

SFEI Personnel	Billing rate <sup>1</sup>	Hours	
Senior Scientist II	197	894	176240
Environmental Scientist II	129	120	15480
Environmental Scientist I	98	900	88200
Associate Environmental Scientist	93	120	11160
Web designer	123	100	12300
Contracts manager	99	140	14120
<i>Total Personnel</i>		<i>2300</i>	<i>322500</i>
Travel			5000
<b>Contractual</b>			
External research associates			250000
Consultants, technical advisors, co-authors			97500
Sample analysis			5000
<i>Total Contractual</i>			<i>352500</i>

**TOTAL 675000**

<sup>1</sup>Note: Billing rates represent the maximum in each salary class to allow involvement of other staff as needed. For example, \$162/hour is the current rate for D Senn, who will be the primary person billing in the Senior Scientist II category.

# FINAL DRAFT

## BACWA National and San Francisco Bay-Delta

### Nutrient Treatment Technologies

#### Symposium

September 4, 2013

8:30 am to 4 pm

#### Symposium Synopsis:

- **Segment 1: Conventional Treatment Technologies**: how they can be adapted for nutrient reduction.
- **Segment 2: Optimization of Existing Facilities**: how to get the most out of your existing treatment processes to meet nutrient requirements.
- **Segment 3: New Approaches, Technologies**: and Research: overview of new developments, Bay-Area ReNUWIt research, and nutrient mining.
- **Segment 4: Bay-Delta Regional studies/activities updates**: updates from local member agencies.

**Continental Breakfast** (30 min – 8 am to 8:30 am)

**Welcome and Symposium Overview** (10 min – Dave Williams, BACWA).

**Segment 1 – Conventional Treatment Technologies and How they Adapt to Nutrient Reduction** (8:40 am to 10:20 am)

1. Overview of Conventional Treatment Technologies (25 min – JB Neethling, HDR).
2. Suspended Growth Technologies and Nutrient Reduction (25 min. – James Barnard, B&V).

3. Fixed Film Processes (e.g. MBBR, TF/AS, IFAS) (25 min – Denny Parker, Brown and Caldwell; or Glenn Daigger, CH2M-Hill).
4. Wetlands, Natural Systems, and “Green Technologies” Alternatives (25 min – Bry’ Sarte, Sherwood Engineers; or Alex Horne, UC Berkeley).

**<Morning Break -20 min (10:20 am to 10:40 am)>**

**Segment 2 – Optimization of Existing Facilities (10:40 am to 12:00 pm)**

5. Process and Control Modifications and Case Studies (e.g. Zone Control/SRT increase, Flow Control, Aeration Control, and CEPT) (30 min. – Alex Ekster, Ekster and Associates).
6. Side-Stream Treatment Technologies and Experience (25 min – John Fraser, Carollo Engineers).
7. Split Treatment Strategies (25 min. – Beverly Stinson, AECOM).

**<LUNCH – 30 min (12:00 pm to 12:30 pm)>**

**Segment 3 – New Approaches, Technologies and Research (12:30 to 1:30 pm)**

8. Overview of New and Emerging Technologies (e.g. Engineered Wetlands, Nitrification, CANDO, ANAMMOX, BIOMAG, Granular Sludge, etc.) (20 min. – Andre Gharagozian, Carollo Engineers).
9. ReNUWIt Research Highlights (20 min - David Sedlak, UCB).
10. Nutrient Capture and Recovery (20 min – Steve Wirtel, Ostara).

**<Afternoon Break -20 min (1:30 pm to 1:50 pm)>**

**Segment 4 – Bay-Delta Regional Case Studies/Activities (1:50 to 3:50 pm)**

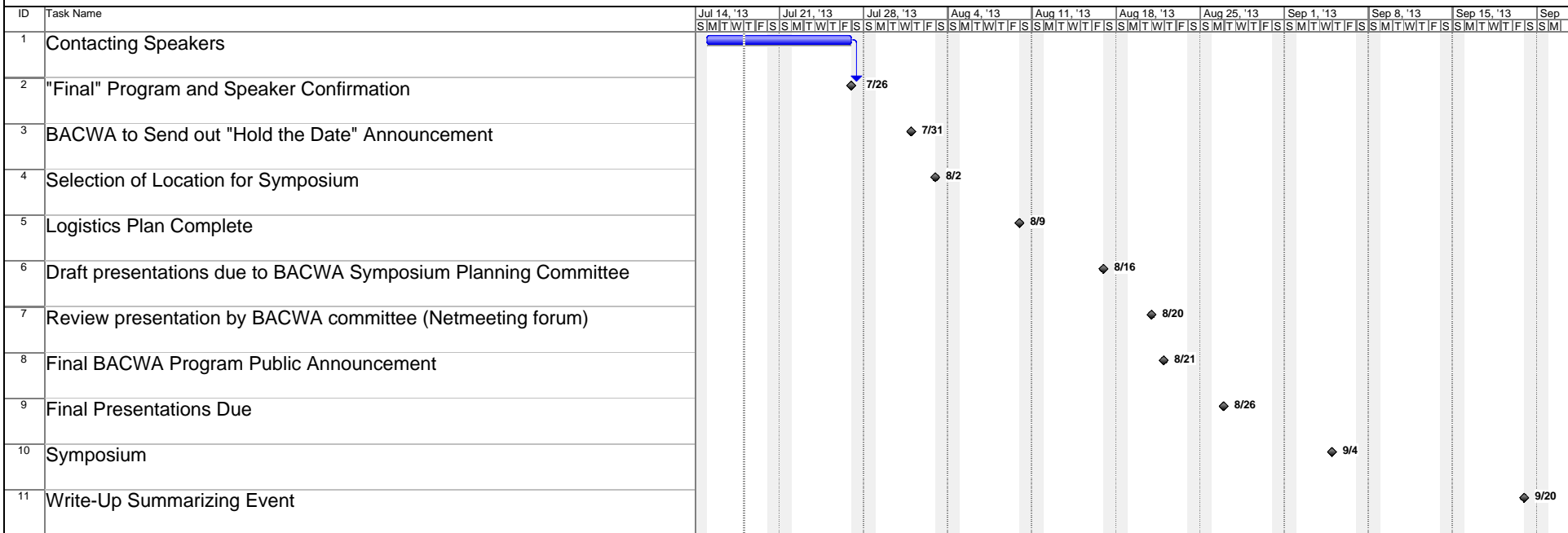
11. San Jose/Santa Clara Update (20 min - TBD).
12. Sacramento Regional Update (20 min – TBD).
13. CCCSD (20 min – TBD).
14. Panel Discussion: “Challenges with Nutrient Treatment Designs/Implementation – What went wrong before the success” (SJ/SC, SRCSD, CCCSD, others; 60 min).

**Summary and Closing Comments (10 min – Dave Williams)**

**Adjourn 4 pm**



## BACWA Nutrient Treatment Technologies Symposium Preparation Schedule



Project: BACWA Nutrient Symposium  
Date: Thu 7/18/13

Task		Progress		Summary		External Tasks		Deadline	
Split		Milestone		Project Summary		External Milestone			

**BACWA National and San Francisco Bay-Delta  
Nutrient Treatment Technologies  
Symposium  
Implementation Schedule Milestones  
July 17, 2013**

**Major milestones:**

- Selection of location for symposium. – Fri 8/2
- Logistic plan complete (location, AV support, staffing functions, set-up, take-down). – Fri 8/9
- Begin contacting speakers – Mon 7/15
- "Final" program and confirmation of speakers. – 7/26
- BACWA to send out "hold the date" public notice announcement for Sept 4. – Wed 7/31
- Draft presentations due to BACWA symposium planning committee. – Fri 8/16
- Review of presentation by BACWA committee (Netmeeting forum). – Tue 8/20
- Final BACWA program public notice announcement sent.- Wed 8/21
- Final presentations due. – Mon 8/26
- Day of symposium. – Wed 9/4
- Write-up summarizing event. – Due Fri 9/20



## REDUCING NUTRIENT INPUTS TO SAN FRANCISCO BAY THROUGH SIDESTREAM TREATMENT BY POTW<sub>s</sub>

### 1. SUMMARY

A growing body of evidence suggests that the historic resilience of San Francisco Bay (SFB) to nutrient enrichment is weakening, and thus generates increased concerns for regulators and stakeholders. As publicly-owned wastewater treatment works (POTWs) account for a significant portion of the nutrient load on SFB, nutrient removal will be the biggest challenge Bay Area POTWs will face due to the substantial capital improvements required, approximated at a cost of \$2-10 billion.

Being a major discharger in the area, EBMUD is moving to evaluate treatment technologies for nitrogen-rich sidestreams in municipal wastewater treatment plants (WWTPs) as an initial step towards nitrogen load reduction. Preliminary estimates indicated a 16-32% nitrogen load reduction (~7,500-15,000 kg-N/day) is possible if sidestream treatment was implemented. EBMUD has initiated the formation of a nutrient task force with BACWA, SFEI, consultant (HDR), and universities (ReNUWIt), to complete the work within a two year schedule, with an ongoing project progress review and comment from the San Francisco Regional Water Quality Control Board. The proposed project approach, work element, output and schedule are presented in **Figure 2** and **Table 1** on the following pages. An EPA grant of \$850,000 (46 %) is requested to partially cover the estimated total project cost of \$1,850,000; along with 54% to be contributed by EBMUD and its collaborators through in-kind services (**Figure 3**). Results of this project are shown in **Figure 4**. The proposed project will not only benefit individual POTW's, but will expedite progress of nutrient management for the entire SFB region.

### 2. PROJECT SCOPE & APPROACH

#### 2.1. Watershed and Water Quality Problems

SFB has long been recognized as a nutrient-enriched estuary. Nutrient loads to subembayments of the SFB are comparable to or greater than those in other estuaries that experience beneficial use impairment due to nutrient over enrichment as illustrated in **Figure 1** comparing chlorophyll a with nutrient load for various water bodies.

SFB has historically been resistant to many of the adverse effects of nutrient over enrichment because of strong tidal mixing, light limitation due to high turbidity, and benthic grazing that help maintain low phytoplankton biomass. However, there is a growing body of evidence that suggests this historic resilience of nutrient enrichment is weakening. Bay monitoring indicates a significant increase in phytoplankton biomass, modest decline in dissolved oxygen concentrations, unprecedented red tide blooms and increased

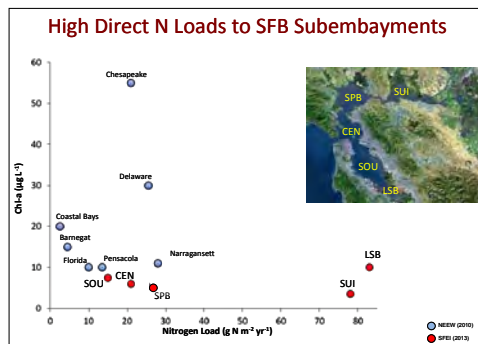


Figure 1. Nitrogen Loads to SFB and Other Water Bodies (SFEI)

frequency of cyanobacteria blooms<sup>1</sup>. These trends in the SFB have generated a growing concern about nutrient-related impairment in the SFB.

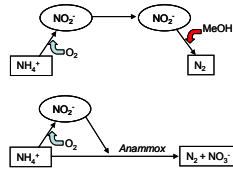
### 2.2. Nutrient Load Contribution from POTWs

Municipal WWTPs account for over 50% of nutrient loadings to the SFB in winter, and about 80% in summer<sup>2</sup>. Most WWTPs are not designed to remove nitrogen (see **Map** at the end). Within WWTPs, a solids dewatering liquid sidestream contributes ~20-40% of nitrogen discharged by WWTP's, but constitutes less than 1% of the WWTP flow. Therefore, separately treating this nitrogen-rich sidestream would be a logical and cost-effective first step towards nitrogen reduction.

There is a wide range of innovative, cost effective and environmentally-friendly shortcut processes (such as those using anammox bacteria) designed for nitrogen-rich sidestream treatment. Most of these processes have been operating at full-scale in Europe and Asia, and are now just starting to be installed in North American WWTP's. Given the unique chemical characteristics of solids dewatering sidestreams for each WWTP, it is necessary to conduct bench- and pilot-scale studies to determine the most effective process in each case. In addition, trucked wastes to WWTPs in this area may have also created unique solids dewatering sidestreams.

Benefits of anammox-type processes over conventional ammonia removal:

- Compact process
- Almost 60% oxygen savings
- 75-85% total nitrogen removal without having to add any external carbon



### 2.3. Project Approach and Goal

The proposed project will:

- Evaluate solids dewatering liquid sidestream nitrogen removal technologies by conducting a comprehensive literature review and pilot testing of selected viable technologies
- Assess feasibility of retrofitting existing facilities for sidestream treatment, conduct necessary bench and/or pilot testing to fill implementation gaps
- Quantify nitrogen load reduction to San Francisco Bay and assess water quality improvement; assuming POTWs performed sidestream treatment
- Develop an integrated management approach for identifying cost-effective solutions within POTWs through treatment upgrades, to achieve various nutrient loading reduction goals driven by both near- and long-term needs for SFB, using sophisticated computer modeling techniques, resulting in a comparative tool for assessing and determining the best regional treatment approach.

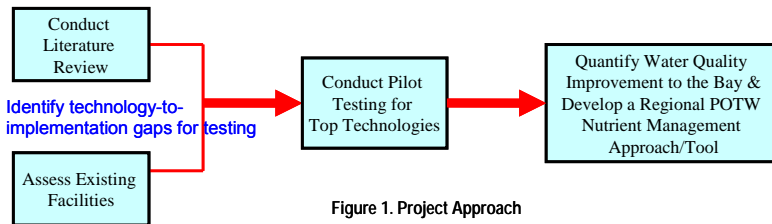


Figure 1. Project Approach

Comment [DMG1]: Figure should be labeled "Figure 3"



### 2.4. Project Task, Output, Schedule, and Collaboration

Project implementation details are summarized in **Table 1**. EBMUD’s proposed nutrient task force (**Figure 2**) will work interactively to complete the project on time and budget, while maintaining quality standards per the QAPP.

### 2.5. Project Budget

The match presented here represents a conservative estimate. A refined budget will be provided with full proposal if pre-proposal is successful.

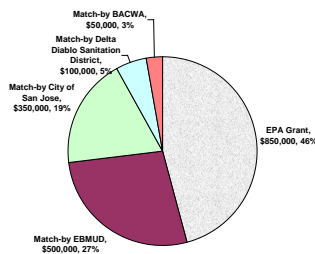


Figure 3. Project Cost and Match

Figure 2. Nutrient Task Force



Comment [DMG2]: This is correct?

### 2.6. Team Qualification and Past Experience with EPA

EBMUD staff has consistently demonstrated the ability to mobilize and direct resources to meet project schedules and reporting requirements to grantor agencies, including USEPA, Water Environment Research Foundation (WERF), and the California Energy Commission (CEC) (EBMUD has successfully competed for well over \$3 million in grants for scientific research projects). EBMUD staff are experienced in preparing QAPP’s (completed 4) required by USEPA, conducting bench- and full-scale evaluations, EBMUD’s scientific efforts have resulted in patents, numerous awards for technical excellence, and numerous papers presented by EBMUD staff and published both locally, nationally, and internationally. Dr. JB Neethling from HDR is a well-known expert in wastewater process design and optimization with emphasis on nutrient removal and advanced treatment processes. Dr. David Senn/SFEI is a lead scientist developing nutrient management strategy and many other studies specifically for SFB. ReNUWIt will provide technical expertise as well as grad-student assistance.

## 3. ENVIRONMENTAL RESULTS

### 3.1. Outputs

Expected outputs from each project task are presented in **Table 1**.

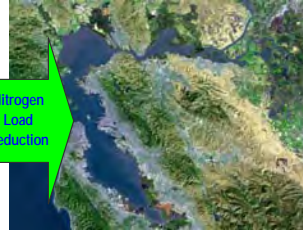
### 3.2. Outcomes

Outcomes from this proposed project is presented in **Figure 4** below.

### San Francisco Bay Area POTWs

### San Francisco Bay

Existing POTW nitrogen loads	Outcomes <b>within</b> funding period (2 years, Jan 2014-Dec 2015)	Outcomes <b>beyond</b> funding period
Bay-wide, POTWs discharged (annual average) 34400 kg/d NH <sub>4</sub> and 11800 kg/d NO <sub>3</sub> (Novick and Senn, 2013)	<ul style="list-style-type: none"> <li>✓ Identified technically-sound, cost-effective sidestream nitrogen removal technologies for POTWs in SFB area, based on pilot testing</li> <li>✓ Understood anticipated nitrogen load reduction and water quality improvement from sidestream treatment and associated implementation needs &amp; costs</li> <li>✓ Developed an integrated management approach to find best solutions for POTWs to achieve various load reduction goals with sidestream treatment alone and combination with mainstream treatment</li> </ul>	Reduced nitrogen load to the SFB by <ul style="list-style-type: none"> <li>-16%-32% reduction</li> <li>- 7,500 -15,000 kg-N/day<sup>1</sup> if ALL POTWs implemented sidestream treatment</li> </ul>



1. Assuming sidestream accounts for 20-40% of nitrogen discharges and sidestream treatment removes 80% nitrogen.

Figure 4. Project Outcome and Timeframe



Table 1. Project Task, Milestone, Output, and Schedule

<i>Work Element</i>	<i>Output<sup>1</sup></i>	<i>Schedule<sup>2</sup></i>
<b>Task 1. Project Administration</b>		
<ul style="list-style-type: none"> <li>• <i>Manage project, coordinate effort, track progress, cost and budget</i></li> <li>• <i>Host meetings with collaborators</i></li> <li>• <i>Host meeting with EPA staff</i></li> <li>• <i>Prepare task and final project reports</i></li> </ul>	<ul style="list-style-type: none"> <li>• Bimonthly progress report to EPA</li> <li>• 5 project review meetings with EPA staff</li> <li>• QAPP and Tasks 2&amp;3 reports to EPA</li> <li>• Draft and Final project report to EPA</li> <li>• Progress review meetings with collaborators</li> </ul>	By Dec 2015
<b>Task 2. Select Sidestream Nitrogen Removal Technologies for Testing</b>		
<ul style="list-style-type: none"> <li>• <i>Literature review</i></li> <li>• <i>Assess feasibility of retrofitting existing facilities for sidestream treatment</i></li> <li>• <i>Identify knowledge and implementation gaps for testing</i></li> <li>• <i>Select at least 3 viable technologies for bench and pilot testing [milestone]</i></li> </ul>	<ul style="list-style-type: none"> <li>• A literature review and technology selection report, customized to the specific needs of POTWs in the SFB area</li> </ul>	By Jun 2014
<b>Task 3. Conduct Bench and Pilot Testing</b>		
<ul style="list-style-type: none"> <li>• <i>Develop a QAPP prior to testing</i></li> <li>• <i>Conduct nitrogen removal technologies pilot tests</i></li> <li>• <i>Evaluate results [milestone]</i></li> </ul>	<ul style="list-style-type: none"> <li>• A QAPP report</li> <li>• A report presenting pilot test results</li> </ul>	By Sept 2015
<b>Task 4. Quantify Water Quality Improvements to SFB</b>		
<ul style="list-style-type: none"> <li>• <i>Estimate nitrogen load reductions to the SFB, assuming sidestream treatment</i></li> <li>• <i>Refine load reductions based on pilot testing results [milestone]</i></li> <li>• <i>Quantify water quality improvements to the Bay via conducting hydrodynamic and water quality modeling—using SFEI’s nutrient SFB model—to be developed</i></li> </ul>	<ul style="list-style-type: none"> <li>• Estimated nitrogen load reductions and water quality improvements to the SFB, to be included in the final project report</li> </ul>	By Sept 2015
<b>Task 5. Develop POTW Management Tool to Achieve Various Nutrient Load Reduction Goals for SFB</b>		
<ul style="list-style-type: none"> <li>• <i>Develop an interactive management approach/tool to identify cost-effective, technically-sound, and integrated multi-agency (BACWA members) solutions to attain various load reduction goals to be developed for SFB [milestone]</i></li> </ul>	<ul style="list-style-type: none"> <li>• A regional POTW nutrient management tool identifying a solution matrix corresponding to various nitrogen load reduction goals</li> </ul>	By Sept 2015

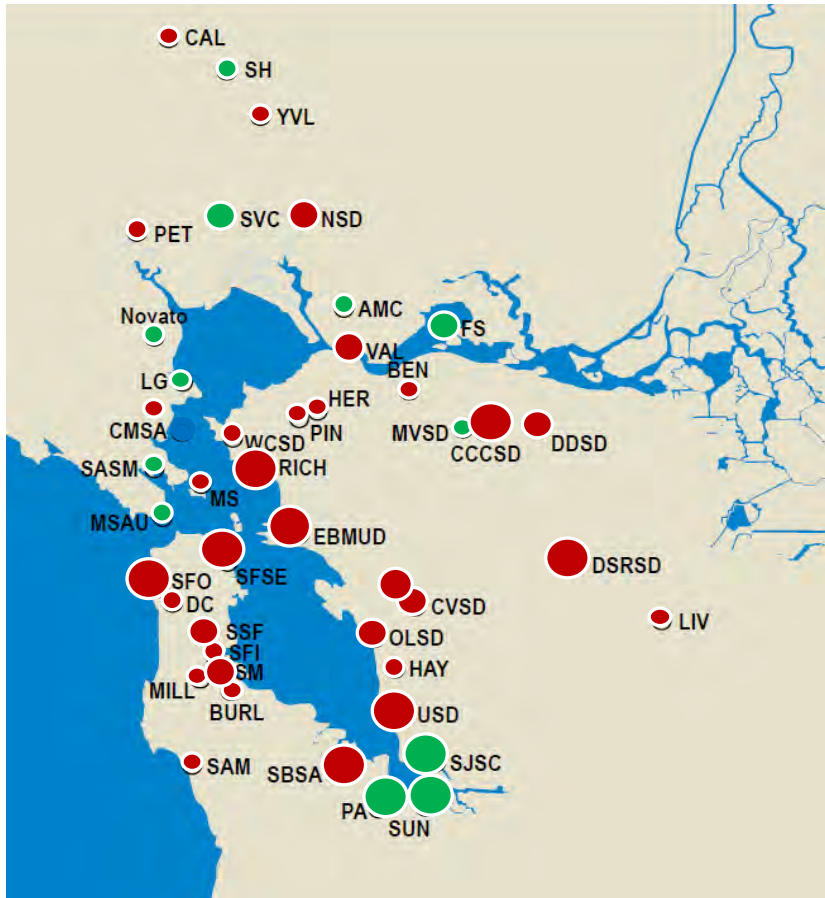
1. Milestones will be discussed with EBMUD collaborators and input will be incorporated. All reports will be shared with EBMUD collaborators. 2. Assuming a project start date of January 3, 2014. QAPP: Quality Assurance Project Plan; SFB: San Francisco Bay; BACWA: Bay Area Clean Water Agencies



### MAP

Watershed: **San Francisco Bay**

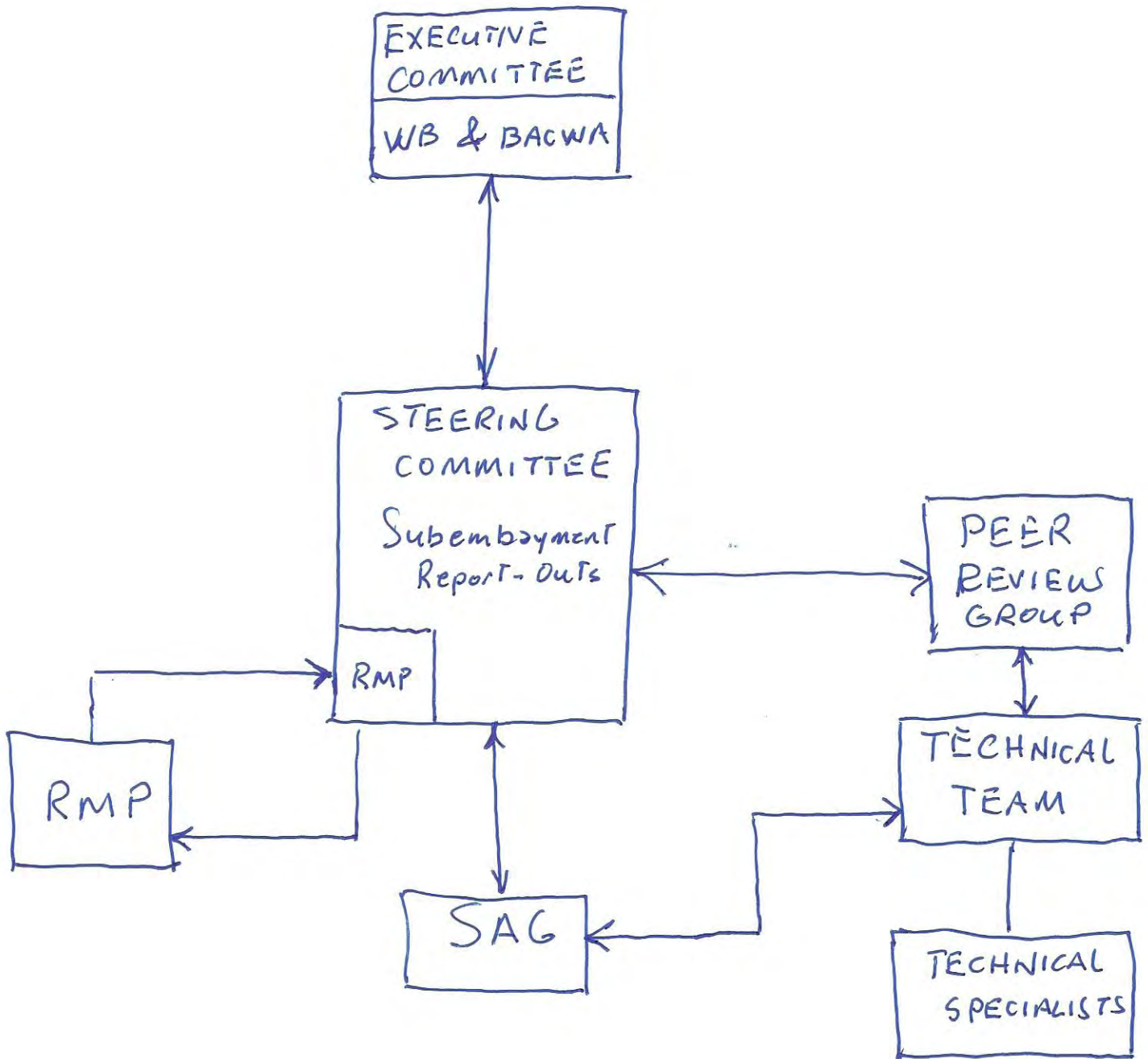
Proposed work areas: **Oakland, CA (EBMUD) and BACWA Member Agencies**



Flow (mgd)	Ammonia Removal	Secondary Treatment
>20	●	●
10-20	●	●
<10	●	●

Map Source: HDR





NEW CONCEPTUAL GOVERNANCE ORGANIZATION

### Nutrients Governance Structure – Proposed Steering Committee

As part of on-going discussions with the SF Bay Regional Water Board staff (WB), a facilitator has been retained by the WB to assist in development of the structure. One of the tasks of the facilitator is to interview stakeholders to get their feelings about development of a more formal governance structure including a Steering Committee that will oversee the nutrient investigations. Some of the stakeholders interviewed may ultimately participate on the Steering committee. At the Board meeting we will be discussing who should be on the BACWA list of interviews. Below is a list of interviewees proposed by the WB and BACWA.

WB Proposed Interviewees	BACWA Proposed Interviewees/ Comments on WB Proposal
1. POTWs. Dave, Ben, Mike, Curt Swanson, small representative discharger.	Add: Sunnyvale (Bhavani) and DDS (Gary D.)
2. Water contractors. Francis Brewster and Lynda Smith together. Val Connor separately with Stephanie Fong	ok
3. Refineries - Kevin Buchan (low priority )	ok
4. Stomwater - Adam Oliveri and Matt Fabrey.	ok
5. Environmental group. Baykeeper, Deb Smith, Ian Wren.	Add: Save the Bay (David Lewis or Njambi Good)
6. USGS - Jim Cloern	ok
7. IEP - Anke/Rainer	Clarification: (Rainer is the Deputy Executive Officer of the Delta Stewardship Council)
8. Sac Regional - need to id appropriate folks	Add: (Prabhakar Somavarapu or Terri Mitchell)
9. RMP - Jay Davis/Meg Sedlak/Meredith Williams in addition to Dave Senn	ok
10. Region 5 - Chris Foe/ Ken Landau	ok
11. Region 2 - Naomi and Tom	ok
12. Ag rep - maybe Farm Bureau or other entity – tbd - we are looking into this	ok
	13. Add: EPA (Terry Fleming, David Smith)



July 1, 2013

Mr. Derek Whitworth  
San Francisco Bay Regional Water Quality Control Board  
1515 Clay Street, Suite 1400  
Oakland, CA 94612

VIA EMAIL: [dwhitworth@waterboards.ca.gov](mailto:dwhitworth@waterboards.ca.gov)

**Subject: Comments on Tentative Order Issued to the City and County of San Francisco Southeast Water Pollution Control Plant, North Point Wet Weather Facility, Bayside Wet Weather Facility, and Wastewater Collection System**

Dear Mr. Whitworth:

The Bay Area Clean Water Agencies (BACWA) appreciates the opportunity to comment on the Tentative Order issued to the City and County of San Francisco Southeast Water Pollution Control Plant, North Point Wet Weather Facility, Bayside Wet Weather Facility, and Wastewater Collection System collectively referred to as the Southeast Plant Permit. BACWA is a joint powers agency whose members own and operate publicly-owned treatment works (POTWs) and sanitary sewer systems that collectively provide sanitary services to over 6.5 million people in the nine-county San Francisco Bay Area. BACWA members are public agencies, governed by elected officials and managed by professionals who protect the environment and public health.

On behalf of its member agencies, BACWA requests that the San Francisco Bay Regional Water Quality Control Board (Water Board) consider the following comment on the Tentative Order's requirements for chronic toxicity testing and hopes that changes will be made prior to issuance of the final Order for the Southeast Plant Permit.

**1. All appropriate tests must be included in Table AE-1 to avoid subverting the intent of the chronic toxicity testing requirement.**

The permit requires determination of the most sensitive species in order to conduct on-going chronic toxicity testing. This cannot be accomplished if only a subset of appropriate tests are allowed by the permit. The EPA determined the appropriate marine chronic tests and endpoints for the West Coast in the "West Coast Manual" ([EPA/600/R-95-136](http://www.epa.gov/600/r-95-136)). Every test in the West Coast Manual, including several with multiple endpoints, is in Table AE-1 except the 72 hour echinoderm larval development test. If the permit goes forward as written, SFPUC may have to use the less reliable 1 hour echinoderm fertilization test. We feel the 72 hour test with its longer exposure time is more conservative plus there is a larger database of

test results for comparison if this test is allowed. We understand that in other permits this test does not show up in Table AE-1 and that the Water Board desires to have permits be as consistent as possible. However, we believe the reason that the test does not show up in other permits is the due to a clerical error made several years ago which should not be the basis for continued omission of a valid critical life stage toxicity test in this and future permits.

For the reasons stated above and to be consistent with the current permit requirements, language should be revised as follows:

Proposed change (Page E-23):

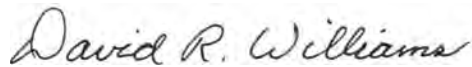
**Table AE-1. Critical Life Stage Toxicity Tests for Estuarine Waters**

Species	(Scientific Name)	Effect	Test Duration	Reference
Alga	<i>(Skeletonema costatum)</i> <i>(Thalassiosira pseudonana)</i>	Growth rate	4 days	1
Red alga	<i>(Champia parvula)</i>	Number of cystocarps	7–9 days	3
Giant kelp	<i>(Macrocystis pyrifera)</i>	Percent germination; germ tube length	48 hours	2
Abalone	<i>(Haliotis rufescens)</i>	Abnormal shell development	48 hours	2
Oyster Mussel	<i>(Crassostrea gigas)</i> <i>(Mytilus edulis)</i>	Abnormal shell development; percent survival	48 hours	2
Echinoderms - Urchins Sand dollar	<i>(Strongylocentrotus purpuratus,</i> <i>S. franciscanus)</i> <i>(Dendraster excentricus)</i>	Percent fertilization	1 hour	2
<b><u>Echinoderms - Urchins Sand dollar</u></b>	<b><u><i>(Strongylocentrotus purpuratus,</i> <i>S. franciscanus)</i> <i>(Dendraster excentricus)</i></u></b>	<b><u>larval development</u></b>	<b><u>72 hours</u></b>	<b><u>2</u></b>
Shrimp	<i>(Americamysis bahia)</i>	Percent survival; growth	7 days	3

Shrimp	<i>(Holmesimysis costata)</i>	Percent survival; growth	7 days	2
Topsmelt	<i>(Atherinops affinis)</i>	Percent survival; growth	7 days	2
Silversides	<i>(Menidia beryllina)</i>	Larval growth rate; percent survival	7 days	3

BACWA appreciates the opportunity to comment on this Tentative Order and thanks you for considering our concerns.

Respectfully Submitted,



David Williams  
Executive Director  
Bay Area Clean Water Agencies

cc: BACWA Board



## BACWA EXECUTIVE BOARD ACTION REQUEST

AGENDA NO.: 12

FILE NO.: 13,063

MEETING DATE: July 25, 2013

### TITLE: Sewer Rate Survey Enhancements

MOTION \_\_\_\_\_  RESOLUTION \_\_\_\_\_  DISCUSSION \_\_\_\_\_

### RECOMMENDED ACTION

Review options for enhancement of BACWA Sewer Service Charge Survey and consider taking either of the following actions:

- a) recommend Chair authorization of agreement with Paul Causey of Causey Consulting to continue base-level administration and management of the current survey (without any enhancements) in the amount of \$6,000 for FY 2013-14; or
- b) determine enhancements to be added to the Sewer Service Charge Survey scope of work (beyond base-level administration and management services) for FY 2013-14 and if necessary, grant the Chair authority to enter into a contract with Paul Causey (>\$10,000).

### SUMMARY

Paul Causey is an independent consultant with more than twenty-five years of experience working for Bay Area clean water agencies. Since August of 2010, he has been providing professional services and expertise to transfer records previously maintained by Redwood City staff, continue the maintenance and administration of this sewer rate database, and compile a database of supporting documentation from participating agencies. A base-level contract for fiscal year 2013-14 would allow Paul Causey to continue to provide support for the maintenance and administration of the current BACWA Bay Area sewer service charge database.

At November 29, 2012 BACWA meeting, Paul Causey provided an update to the Board on the current state of the survey and reviewed options for increased administration and management of the survey, as well as possibilities for acquiring more comprehensive information. During budget planning discussions at the April and May 2013 Board meetings, attendees reported that although finance groups at their agencies have used the current survey, they typically initiate their own inquiries among comparable agencies and noted the potential benefits of BACWA providing a more robust and accurate database. Based on this feedback, Paul Causey has prepared the attached proposal for enhancements that could be initiated under a fiscal year 2013-14 contract.

### FISCAL IMPACT

Under the approved BACWA/CBC FY2013-14 budget and workplan, \$6,000 has been allocated to fund this program. Additional funds from the CBC Contingency line item could be used to support survey enhancements.

### ALTERNATIVES

No other alternatives were considered as the terms of this contract is consistent with BACWA contracting policies.

*Attachments:* Causey Consulting Sewer Service Charge Proposal



*Causey Consulting  
733 Cree Court  
Walnut Creek, CA 94598  
925-323-6520*

*June 16, 2013*

Mr. David Williams, Executive Director  
Bay Area Clean Water Agencies  
PO Box 24055, MS 59  
Oakland, CA

*Transmitted Electronically*

Subject: Proposal for Potential Enhancements  
BACWA Sewer Service Charge Survey

Dear Mr. Williams:

As requested, please find a list of potential enhancement to the BACWA Sewer Service Charge Survey for your consideration. In addition, we have included several background and supporting documents to assist in understanding the proposed enhancements as follows:

1. EXCEL spreadsheet of Survey Enhancements.
2. BACWA Sewer Service Charge Survey Program Description.
3. Sample of Potential Participant Survey Questions.

We have included a brief description of each enhancement, the number of hours required for both implementation and an estimate of ongoing costs to manage each enhancement if implemented subsequent to its development. We have listed all of the enhancements and have provided them from most expensive to least expensive. We believe that many of these enhancements, especially the survey of participants, should serve to inform of the value of the survey information for the participants as well as provided added information to further allow additional agency comparisons beyond just single family residential charges. We have very much enjoyed our efforts to administer and manage the Bay Area sewer service change survey and look forward to the BACWA Board's positive consideration of proposed enhancements,

One item of note, we have increased our billing rate for the enhancement work to \$100 per hour but are not proposing an increase for the monthly survey administration and management which is and will continue to be billed at \$75.00 per hour. These hourly rates are substantially below our normal billing rates for Causey Consulting and reflect our professional support of this very important activity to Bay Area agencies.



*Causey Consulting*  
*733 Cree Court*  
*Walnut Creek, CA 94598*  
*925-323-6520*

We look forward to discussions regarding the potential program enhancements and can be available to meet with the BACWA Board if required to explain and expand on the current proposals. If you have questions or suggestions for other enhancements, please contact me by email at [causeywc@comcast.net](mailto:causeywc@comcast.net) or by phone at 925-323-6520.

Very truly yours,

A handwritten signature in black ink that reads "Paul H. Causey". The signature is written in a cursive, flowing style.

Paul H. Causey  
Causey Consulting

Attachments



**BACWA Sewer Service Charge Survey  
Summary of Potential Enhancement to the Program  
June 16, 2013**

<b>Enhancement Option Number</b>	<b>Description of Proposed Enhancement</b>	<b>Estimated Hours to Implement</b>	<b>Estimated Cost \$100/hr</b>	<b>Ongoing Annual Costs hrs/yr</b>	<b>Annual Cost \$75/hr</b>
1	Conduct a satisfaction survey of participating agencies requesting input on the BACWA survey, soliciting input for improvements and evaluating current information in the monthly survey. This would require development of the questionnaire, identification of an electronic survey instrument, administration of the responses and development of a summary report and recommendations to the BACWA Board. Currently there are 127 agencies listed in the survey.	80	\$ 8,000	0	\$0
2	Enhance the current fully voluntary survey by annually contacting and conforming survey information for one half of the agencies in the survey. This would require direct telephone contact with 65 agencies per year. Assumes one hour per agency per year.	65	\$ 6,500	65	\$4,875
3	Provide annual funds to conduct internet research on sewer service documents available from participating agency's such as resolutions and ordinances, sewer rate studies, Proposition 218 notices and other documents related to the administrating and management of sewer service charges. This could also include either a list or copies of final court decisions from Proposition 218 litigation -historical and future decisions of courts throughout the state. This could be expanded to include other agency documents from across the state in the document library.	50	\$ 5,000	25	\$1,875

**BACWA Sewer Service Charge Survey  
Summary of Potential Enhancement to the Program  
June 16, 2013**

<b>Enhancement Option Number</b>	<b>Description of Proposed Enhancement</b>	<b>Estimated Hours to Implement</b>	<b>Estimated Cost \$100/hr</b>	<b>Ongoing Annual Costs hrs/yr</b>	<b>Annual Cost \$75/hr</b>
4	Develop process for and annually prepare Sewer Service Charge Report and graphs of historical average sewer service charges for the region and/or other potential areas such as county or service types. The report would overview the survey, identify trends and changes, provide historical comparison of rate changes across the region and other service charge information and statistics from the operation of the survey during the reporting period. It is likely his would be done during January and February for the preceding calendar year.	40	\$ 4,000	25	\$1,875
5	Expand the survey to compare commercial and industrial sewer service charges. This enhancement would involve revising the current spreadsheet to add separate sheets for commercial and industrial rate information and rely on voluntary input from agencies.	40	\$ 4,000	12	\$900
6	Move the current platform (MalEnable) for survey information to a password protected platform that agencies can access for survey and agency information. This could include availability of a service charge document library for sewer service charge related documents.	30	\$ 3,000	0	\$0
7	Develop a total single family cost per household to include sewer service charge plus property tax revenue per parcel - total cost of service for each agency. Survey agencies receiving property taxes to understand current revenue and long term likelihood of continuation of revenue.	30	\$ 3,000	0	\$0
8	Request basic agency information of each treatment agency in the survey. Includes survey preparation and administration plus entry of all data received into the database.	25	\$ 2,500	20	\$1,500

**BACWA Sewer Service Charge Survey  
Summary of Potential Enhancement to the Program  
June 16, 2013**

<b>Enhancement Option Number</b>	<b>Description of Proposed Enhancement</b>	<b>Estimated Hours to Implement</b>	<b>Estimated Cost \$100/hr</b>	<b>Ongoing Annual Costs hrs/yr</b>	<b>Annual Cost \$75/hr</b>
9	Expand connection fee information to include multiple family fees and charges.	25	\$ 2,500	5	\$375
10	Complete the development of the Document Library with existing information already submitted. Create the Library so that it is password accessible by all survey participants.	20	\$ 2,000	5	\$375
11	Conduct electronic survey of non agency participants to understand use of survey and to request input regarding possible enhancements to the survey information. This would involve 26 individuals and could be coupled with the survey above or done separately as the Board wishes.B13	20	\$ 2,000	0	\$0
12	Work with the SWRCB sewer service charge group to reduce duplication of survey information as much as possible.	20	\$ 2,000	5	\$375
13	Using CIWQS data base populate agency information with agency statistics and information such as miles of pipe, number of pump stations, budgets, etc.	15	\$ 1,500	10	\$750
14	Expand the survey to include rates for all typical residential uses in the multi family and trailer park uses. This would include revisions to the survey format and regular updates monthly to agency information. This would require 10 hours for the initial survey set-up and one additional hour monthly to update the survey that is sent to all participants.	10	\$ 1,000	12	\$900
15	Identify standard rate periods for each agency - when do they establish rates and for what period of time.	10	\$ 1,000	0	\$0

# **Bay Area Clean Water Agencies Sewer Service Charge Survey Program Description**

**June 2013**

The BACWA Sewer Service Charge Survey is a monthly survey of 127 municipal and special district agencies that impose sewer services charge on their customers and businesses in the greater San Francisco nine County Bay Area. In addition, twenty-six (26) consultants and regulators also receive copies of the survey each month. The survey provides comparative information, **submitted voluntarily**, of an agency's monthly single-family residential sewer service charges, monthly property tax revenues per parcel, number of single-family residential connections and the single-family residential connection fee.

The survey also includes information regarding the county of operation, the treatment agency responsible for treating the wastewater and the effective dates for all charges and fees. The survey is an EXCEL based spreadsheet that allows for the review, evaluation and use of the data by all parties receiving the survey. The EXCEL spreadsheet allows the user to select and reduce the data to include agencies or services of particular interest such as by county, by agency names or by full or satellite services using the filtering functions in EXCEL.

The survey has been prepared monthly since the early 1990s when the survey was voluntarily supported by a one of the survey agencies. The last agency to voluntarily support the survey preparation was the City of Redwood City. This was prior to a decision by the BACWA Board to continue the survey when the Redwood City representative was unable to solicit voluntary support from any of the other survey agencies. BACWA has been providing the management and administration of the survey since August 2011.

Because the survey is voluntary, BACWA includes a strong disclaimer of the information and substance of the survey as follows:

*This survey tool does not replace or in anyway function as a substitute for the annual survey of agencies' treatment works that is compiled by the State Water Board. This survey tool is strictly a benchmarking tool with voluntary participation by agencies and the information contained in this survey is provided by the participating agencies. The Bay Area Clean Water Agencies (BACWA) provides no warranty, expressed or implied, including the warranties of merchantability and fitness for a particular purpose, as to the accuracy, reliability or completeness of data or content that is contained in this survey tool. BACWA neither guarantees nor assumes any legal liability or responsibility for the accuracy, completeness, or usefulness of any information or content*

*contained in this survey tool. For more detailed information about the rates or fees of a specific agency, please contact the agency directly.*

The information in the survey receives no manipulation or evaluation prior to the monthly distribution other than the update of agency information as reported to the Administrator after approval of changes by the Boards or Councils of the individual agency.

Recently, the Survey Administrator has been asked to begin the development of a library of agency documents related to the ratemaking and rate setting processes. The documents currently accumulated include Proposition 218 notices, rate resolutions, rate ordinances and sewer service charge evaluations and reports. These documents have yet to be made available to all agency participants but will remain in the library until technical details are developed regarding the sharing procedures for these documents.

The Administration and Management Services by Causey Consulting are provided on a time and materials basis at a rate of \$75.00 per hour and generally require 3 to 5 hours per month for the mechanical update and transmittal of the survey to all participants. The contract has been issued on a fiscal year basis and has generally not exceeded a total cost of \$6,000. The time required varies depending upon the number of changes reported each month. The greatest number updates requested occur in July and January of each year as the agencies modify and change their rates and fees. Currently a MailEnable email address has been established for the transmission and submittal of all surveys and responses from the member agencies. This site has proved to be very cumbersome and has required that several of the monthly surveys must be transmitted from a separate email address in order to be accepted by agency servers. Finally, the contact list management functions are troublesome and have very limited functionality.

The nature and character of the sewer service charge survey has not changed substantially since its inception. Minor changes such as adding property tax receipts received by each agency and number of residential connections were added but no other major changes have been made. A list of potential survey enhancements has been shared with all of the Executive Directors.

# BACWA Sewer Service Charge Survey

## March 2011

1. How do you use the survey information currently?
  - Justification for rate adjustments
  - General knowledge of my neighboring agencies
  - Determination of rate equitability
  - To advise City Council
  - To assure rate equitability
  - General rate information
  - Part of public outreach to customers
  - As management information
  -
  
1. How valuable is the survey to your agency?
  - Very valuable
  - Highly valuable
  - Valuable
  - Less valuable
  - Of little use
  
2. Is my agency name correct? Yes no If no please submit full agency name.
  
3. What additional information would your agency like to see in the survey?
  
4. How easy do you find it to edit and respond to the survey?
  - Very easy
  - Easy
  - Somewhat challenging
  - Very challenging
  
5. What information is of little or no interest to your agency?
  
6. Do I wish to continue receiving this survey? Yes? No?
  
7. Why do I participate in the survey?
  - Valuable information for my agency
  - Good info for elected officials
  - Management desires that we participate
  - Personal value to the industry
  - Good background information
  - Saves me time not having to do my own survey
  - Good industry information is provided

- To help prepare justification for rate increases
- 

8. What changes would you like to see made to the survey?
9. How often do you use the information in the survey?
10. Is the Regional Sorting option used? Worthwhile?
11. How would you expand the survey to be of more value to your agency?
12. Should winter water usage be deleted from the survey?
13. Is the definition of single family residential clear and useable?
14. Should the service charge and connection fee information be reported on separate spreadsheets?
15. Is monthly circulation of the information appropriate for your use? If not when? Quarterly, semi-annual or annual? If annual at what time of year?
16. What is your confidence level of the information presented in the survey?
17. How easy is the survey to use and manipulate?
18. Is the data clear and well presented?
19. What one thing would you change in the survey if you could make one positive change?
20. What information would you like to see added to the survey? Deleted from the Survey?

- Population
- Number of connections
- Number of equivalent sewage units
- Agency type
- O&M Budget
- Miles of line
- Treatment capacity
- Graph of rates? Regional? Entire?
- Annual average rate value
- Historical Rate Graph
- Collection methods
- Commercial rates
- Industrial rates
- Rate period (1 yr, 2yr, other)
- Total cost of service
- ID other revenue sources

- Updated regional reporting
- Length of rate period
- Annual Sewer Service Charge Summary
- 

21. Delete from the Survey

- Column coloring
- Filter functions
- Winter water usage
- Connection fee info
- Regional System information
- Property tax information
- Circulation timing
- 

SAMPLE



-----Original Message-----

From: Survey Administrator [mailto:ratesurvey@bacwa.org]

Sent: Friday, February 22, 2013 4:47 PM

To: amasjedi@ci.pleasanton.ca.us; ayemane@ci.berkeley.ca.us;  
asavay@cityofsancarlos.org; alex@bartlewells.com; agunnell@bacwa.org;  
ashu@fostercity.org; atlaw@oaklandnet.com; alton.baxley@ci.concord.ca.us;  
amandar@ddsd.org; amandaw@ddsd.org; abaker@sbsa.org; astillman@co.sanmateo.ca.us;  
aturon@oroloma.org; tony@samcleanswater.org; bhogue@pacbell.net; bhogue@ci.corte-  
madera.ca.us; bhorenst@ebmud.com; bmarshall@wcwd.org; bevj@novatosan.com;  
bill@centralsan.dst.ca.us; PRibKing@aol.com; brichards@rvsd.org;  
Blee@redwoodcity.org; bseale@sfgwater.org; Cindy.Hernandez@cityofsanrafael.org;  
cvillacorta@waterboards.ca.gov; colette@centralsan.dst.ca.us;  
croyer@dalycity.org; manager@town.crockett.ca.us; dchild@sbsa.org;  
dkimm@ebmud.com; dggreenwood@ci.livermore.ca.us; David.Tucker@sanjoseca.gov;  
dwilson@ci.san-leandro.ca.us; dpedro@losaltoshills.ca.gov;  
dcomito@granada.ca.gov; deniseC@LWA.com; doug@stegeSD.dst.ca.us;  
eshalaby@wcwd.org; EMILLIER@centralsan.dst.ca.us; eoyama@westvalleysan.org;  
eric.keniston@cityofpaloalto.org; kuefner@dsrsd.com; mail@hillsborough.net;  
GWarman@ci.corte-madera.ca.us; gacosta@westvalleysan.org; hody@scwa.ca.gov  
Cc: ratesurvey@bacwa.org

Subject: BACWA Sewer Survey through January 31, 2013

Hi all,

Attached please find the sewer service charge survey updated through January 31, 2013. Please assure yourself that your agency information is correct and if not, please update and return a copy of the survey with your corrections. In addition, we are approaching the time when agencies will again be considering rates and charges and may be initiating the processes for potential changes to rates and charges. Please remember that BACWA is developing a library of rate related documents such as Prop 218 notice, rate resolutions, rate ordinances, rate related legal opinions and any other documents that your agency is willing to share. Please forward copies of these documents to our survey address either with your revised survey or separately as appropriate.

Paul H. Causey  
Survey Administrator  
733 Cree Court  
Walnut Creek, CA 94598  
925-323-6520  
925-932-5032 FAX (call first)  
causeywc@comcast.net

Bay Area Single Family Residential User Charges (fixed rate per month unless otherwise noted; annual or bimonthly rates converted to monthly)

Period Ending January 31, 2013

Indicate the fee according to the level of service charged for:

Agency	County	Regional System / Subsystem	SFR Rate Effective Date	"Full Service" (WW Treatment & Collection, etc.)	WW Treatment, etc. excluding WW Collection	"Satellite" WW Collection Only	Property Tax/month, other fees, i.e. ad valorem	Winter Water Use (per avg hcf)	Other or Comments	Contact	Last Verified	Number of SFR Connections	SFR Connection Fee	Connection Fee Effective Date
Airport-Larkfield-Wikiup	Sonoma	SCWA	07/01/10	\$ 49.50					Annual Direct charge on the tax roll (\$594.00)		11/9/2009	1,932	\$ 9,500.61	7/1/2010
Alameda (City)	Alameda	EBMUD Special Dist 1	07/01/07			\$ 14.37				Wali Waziri [wwaziri@ci.alameda.ca.us]	8/7/2007		\$ 895.00	
Albany	Alameda	EBMUD Special Dist 1	07/01/10			\$ 27.47			Annual Direct charge on the tax roll (\$329.64)	Randy Leptien [randyleptien@lcc-inc.com]	1/4/2011	3,720	\$ 1,166.00	7/1/2010
Almonte SD	Marin	Sewerage Agency of Southern Marin	07/12/10	\$ 33.33						Bonner Beuhler [PRibKing@aol.com]	8/2/2006	787		
Alto SD	Marin	Sewerage Agency of Southern Marin	07/01/11	43.75						Tom Roberts [tomroberts7@aol.com]	8/2/2006	517		
American Canyon	Napa		03/01/08	\$ 36.79							4/2/2008	4,217	\$ 8,343.00	1/1/2004
Antioch	Contra Costa	Delta Diablo SD	07/01/11		\$ 19.87				DDSD rate adopted 6/6/2011 for FY11/12 City collection system note: plus \$1.89/1000 gal water use	Harris, Theresa U. [theresah@ddsd.org] City, Phil Harrington [pharrington@ci.antioch.ca.us]	2/11/2011	30,255	\$ 5,033.00	7/12/2006
Bay Point	Contra Costa	Delta Diablo SD	07/01/11	\$ 29.17					DDSD rate adopted 6/6/2011 for FY11/12 City collection system note: plus \$1.89/1000 gal water use	Harris, Theresa U. [theresah@ddsd.org]	2/11/2011	4,990	\$ 3,940.00	7/12/2006
Belmont	San Mateo	SBSA	07/01/07					5.00	FY 06-07 residential rates are \$5.00 HCF based on 8.7 monthly HCF usage or \$43.50; FY 07-08 residential rates are at \$5.00 HCF based on 7.4 monthly HCF usage or \$43.50; Usage is based on average of 4 months flow measured between December thru March.	Tom Fil [tfil@belmont.gov]; Brooke Lazzari [blazzari@belmont.gov] 650.595.7436	8/6/2007	8,272	\$ 1,750.00	7/1/2007
Belvedere	Marin	Tiburon SD	07/01/11	\$ 145.66						Robert L. Lynch [rlynch@sanis.org]	2/10/2012	1,126		
Benicia	Solano		07/01/06	\$ 41.33						Chris Tomasik [ctomasik@ci.benicia.ca.us]	1/30/2007	8,227	\$ 7,500.00	10/2005
Berkeley	Alameda	EBMUD Special Dist 1	07/01/06			\$ 23.17			*Average SFR monthly sewer fee=\$23.17; \$41.66/month cap, collected via EBMUD	Yemane, Adadu [AYemane@ci.berkeley.ca.us]	7/2/2008	29,283	\$ 3,636.00	7/1/2005
Bodega Bay PU District	Sonoma									Bodega Bay Utilities 707-875-3332				
Bolinas Community PUD	Sonoma		07/01/05	\$ 48.92						Philip Buchanan [pbuchanan@bcpubd.org]				
Brentwood	Contra Costa			\$ 19.00										
Brisbane	San Mateo		01/01/07	\$ 26.18					This is fixed charge. Use charge is \$1.07 per month for every unit of water usage up to 8 units, then \$2.91 per unit thereafter. Based on average water usage during Nov, Dec, Jan, and Feb of each year. Reported SFR Connections is total residential (includes multi-family).	Matthew Fabry [mfabry@ci.brisbane.ca.us]	5/2/2007	1,499	\$ 2,523.00	8/18/2006
Burbank SD	Santa Clara	San Jose/Santa Clara tributary systems	07/01/06	\$ 22.49	\$ 27.34				Monthly fee includes collection and treatment plant O&M	Karen McDonough [Karen.McDonough@sanjoseca.gov]	7/18/2007			
Burlingame	San Mateo		07/01/08	\$ 72.77					\$8.27 per 1,000 gallons of average water consumption for the billing periods January through April of the years 2006, 2007, and 2008. \$16.54 minimum monthly charge	Rob Mallick [rmallick@burlingame.org]	10/14/2008	9,000	\$ 209.00	7/1/2008
Burlingame Hills SMD	San Mateo		07/01/12	\$ 132.92					Treatment by City of Burlingame	Mark Chow [mchow@co.sanmateo.ca.us] Benjamin Vazquez [bvazquez@co.sanmateo.ca.us]	8/1/2012	436	\$ 3,920.00	1/1/2012
Calistoga	Napa		12/01/11	\$ 56.63						Dan Takasugi [Dtakasugi@ci.calistoga.ca.us] Louise Harrison [LHarrison@ci.calistoga.ca.us]	1/17/2013	1,022	\$ 21,939.01	1/1/2012
Castro Valley SD (CVSan)	Alameda	East Bay Dischargers Authority	07/01/12	\$ 21.66					SSC increase to \$252/yr effective 7-1-11	Janette Stuart [janette@cvsan.org]	7/1/2012	16,000	\$ 11,999.00	7/1/2012
Central Contra Costa SD	Contra Costa		07/02/12	\$ 30.92			\$ 6.00			Earlene Miller [emiller@centralsan.dst.ca.us]	4/23/2012	133,000	\$ 5,797.00	7/2/2012
Central Marin Sanitation Agency (CMSA)	Marin	Central Marin Sanitation Agency	07/01/07		\$ 17.92				The Sewer Connection fee will be \$6450.18 effective 7-1-09 for FY 2009-10. The connection fee includes a \$50/fixture unit with a minimum of \$500, \$1000 inspection fee; and \$4950.18 CMSA Capacity charge.	Jason Dow [jdow@centralmarinsa.org]	7/13/2007	55,515	\$ 4,616.00	
Concord	Contra Costa	Central Contra Costa SD	07/01/11	\$ 27.17					Service area includes City of Clayton & treatment is by CCCSD.	Rodgers, Christina [Christina.Rodgers@ci.concord.ca.us]	8/2/2011	38,748	\$ 4,705.00	7/1/2011
Cotati, City of	Sonoma	Laguna Sub-Regional WW Treatment Plant		\$ 26.46										
County SDs 2-3	Santa Clara	San Jose/Santa Clara tributary systems	07/01/06	\$ 22.50	\$ 22.50				Monthly fee includes collection and treatment plant O&M	Karen McDonough [Karen.McDonough@sanjoseca.gov]	7/18/2007			
Crockett Sanitary Dept.	Contra Costa		07/01/11	\$ 52.67					This Dept. of Crockett CSD replaced Crockett-Valona San. Dist. in 2006. Crockett CSD now has responsibility for the Crockett Sanitary Dept. and the Port Costa Sanitary Dept. (formerly CCCSD #5)	Dale McDonald [manager@town.crockett.ca.us]	1/12/2012	933	\$ 2,425.00	7/1/2004
Crystal Springs CSD	San Mateo		07/01/12	\$ 112.50					Treatment by City of San Mateo, district unincorporated San Mateo County	Mark Chow [mchow@co.sanmateo.ca.us] Benjamin Vazquez [bvazquez@co.sanmateo.ca.us]	8/1/2012	1,534	\$ 3,920.00	1/1/2012
Daly City	San Mateo	North San Mateo County Sanitation Dist.	07/01/07	\$ 36.15				4.82	Winter's month usage (January/February) used to calculate charges. Minimum charge of \$53.82 on new accounts until use.	Cytha Royer [croyer@dalcycity.org] Patrick Sweetland [psweetland@dalcycity.org]	7/18/2011	22,178	\$ 2,600.00	8/25/2003
Duperino SD	Santa Clara	San Jose/Santa Clara tributary systems	07/01/06	\$ 18.00	\$ 21.00				Monthly fee includes collection and treatment plant O&M	Karen McDonough [Karen.McDonough@sanjoseca.gov]	7/18/2007			
Delta Diablo Sanitation Dist	Contra Costa	Delta Diablo SD							See data for satellite systems: Antioch, Bay Point, Pittsburg	Harris, Theresa U. [theresah@ddsd.org]	2/11/2011			

**Bay Area Single Family Residential User Charges (fixed rate per month unless otherwise noted; annual or bimonthly rates converted to monthly)**

Period Ending January 31, 2013

Indicate the fee according to the level of service charged for:

Agency	County	Regional System / Subsystem	SFR Rate Effective Date	"Full Service" (WW Treatment & Collection, etc.)	WW Treatment, etc. excluding WW Collection	"Satellite" WW Collection Only	Property Tax/month, other fees, i.e. ad valorem	Winter Water Use (per avg hcf)	Other or Comments	Contact	Last Verified	Number of SFR Connections	SFR Connection Fee	Connection Fee Effective Date
Devonshire CSD (San Carlos)	San Mateo	SBSA	07/01/12	\$ 85.42					Treatment by SBSA / collection via agmt City of San Carlos	Mark Chow [mchow@co.sanmateo.ca.us] Benjamin Vazquez [bvazquez@co.sanmateo.ca.us]	8/1/2012	311	\$ 3,920.00	1/1/2012
Dublin-San Ramon SD (DSRSD)	Alameda		07/01/09	\$ 24.54	\$ 19.46				Could you please change our county to Alameda? Only a small portion of our sewer customers are actually in CC county the majority are in Alameda City [per J Archer 11/10/09]	John Archer archer@dsrsd.com	11/9/2009	27,402	\$13,000 Treat	7/1/2008
EBMUD, Special Dist No. 1	Alameda	EBMUD Special Dist 1	07/01/12		\$ 16.94			6.70	Plus \$6.30/month wet weather program fee collected on property tax bill	Richard Lou [rlou@ebmud.com]; Kimm, Dan [dkimm@ebmud.com]	12/14/2012	139,000	\$ 1,235.00	8/10/2009
Edgewood SMD (RWC)	San Mateo	SBSA	07/01/12	\$ 85.42					New district, Treatment SBSA/collection via agmt Redwood City	Mark Chow [mchow@co.sanmateo.ca.us] Benjamin Vazquez [bvazquez@co.sanmateo.ca.us]	8/1/2012	8	Varies	1/1/2012
Emerald Lake SMD - Zone 1 (San Carlos)	San Mateo	SBSA	07/01/12	\$ 96.67					Treatment by SBSA, Collection via agmt San Carlos	Mark Chow [mchow@co.sanmateo.ca.us] Benjamin Vazquez [bvazquez@co.sanmateo.ca.us]	8/1/2012	207	N/A	1/1/2012
Emerald Lake SMD - Zone 2 (RWC)	San Mateo	SBSA	07/01/12	\$ 70.83					Treatment by SBSA, Collection via agmt Redwood City; Connection fee varies: unincorporated = \$24,682 & Redwood City = \$18,650	Mark Chow [mchow@co.sanmateo.ca.us] Benjamin Vazquez [bvazquez@co.sanmateo.ca.us]	8/1/2012	1,490	24,949(uninc) - 18,851 (city)	1/1/2012
Emeryville	Alameda	EBMUD Special Dist 1				\$ 8.00				Maurice Kaufman [mk Kaufman@ci.emeryville.ca.us]				
Fair Oaks SMD (RWC)	San Mateo	SBSA	07/01/12	\$ 41.67					Treatment by SBSA	Mark Chow [mchow@co.sanmateo.ca.us] Benjamin Vazquez [bvazquez@co.sanmateo.ca.us]	8/1/2012	11,228	\$ 3,920.00	1/1/2012
Fairfield, City	Solano	Fairfield-Suisun SD				\$ 1.80			charge based on \$5.057/mi of pipe (FSSD subvention)	Rick Wood [rwood@ci.fairfield.ca.us]	1/9/2009	25,158	N/A	
Fairfield-Suisun Sewer Dist	Solano	Fairfield-Suisun SD	07/01/09	\$ 25.49						Marcie Bodeaux [mbodeaux@fssd.com]	8/3/2009		\$ 5,943.00	7/1/2009
Forestville Water Dist-Sewer	Sonoma								Forestville Water District 707-887-1551					
Foster City/Estero MID	San Mateo		07/01/11	\$ 46.05					Rates approved on June 20, 2011 effective July 1, 2011.	Steve Toler [stoler@fostercity.org]; Ray Towne [rtowne@fostercity.org]	1/3/2012	4,600	\$ 2,100.00	7/1/2011
Geyserville	Sonoma	SCWA	07/01/12	\$ 69.75					Annual Direct charge on the tax roll (\$805.00)		7/1/2012	267	\$ 3,356.70	7/1/2012
Gilroy	Santa Clara									Caria Ruigh [cruigh@ci.gilroy.ca.us]				
Granada Sanitary District	San Mateo	Sewer Authority Mid-Coastside	07/01/12	33.50						GSDSanitary@comcast.net Della Comito [dcomito@granada.ca.gov]	7/23/2012	2,244	\$ 4,700.00	7/5/2001
Graton Community Svcs Dist	Sonoma		07/01/12	\$ 131.20					Graton Community Service district 707-824-1282		7/23/2012			
Half Moon Bay	San Mateo	Sewer Authority Mid-Coastside	07/01/12	\$ 37.68				30.80	Winter months usage (Nov/Feb) used to calculate. \$30.80 rate per (hcf) of water use. Minimum charge is \$492.80 or \$41.07/month. On property tax roll	rklyser@ci.half-moon-bay.ca.us	3/19/2012	3,964	\$ 5,135.60	5/3/2011
Harbor Industrial SMD (San Carlos)	San Mateo	SBSA	07/01/12	\$ 27.50					Treatment by SBSA, Collection via agmt City of San Carlos	Mark Chow [mchow@co.sanmateo.ca.us] Benjamin Vazquez [bvazquez@co.sanmateo.ca.us]	8/1/2012	239	\$ 3,920.00	1/1/2012
Hayward	Alameda	East Bay Dischargers Authority	10/01/12	\$ 27.27						Marilyn Mosher [Marilyn.Mosher@hayward-ca.gov]	12/14/2012	27,000	\$ 7,700.00	10/1/2011
Healdsburg	Sonoma			\$ 43.46										
Hercules	Contra Costa			\$ 19.17						Jeff Brown [jbrown@ci.hercules.ca.us]				
Hillsborough	San Mateo		07/01/12	\$ 158.16					FY 12/13 Residential Sewer Rate charged thru Property Tax bill is \$1,898 annually	Marie Bernardo [mbernardo@hillsborough.net]	1/14/2013	3,878	\$ 11,090.00	7/1/2011
Homestead Valley SD	Marin	Sewerage Agency of Southern Marin	07/01/11	47.92						Tom Roberts [tomroberts7@aol.com]	8/2/2006	1,067		
Ironhouse Sanitary District	Contra Costa		07/01/12	\$ 51.50						Susan V. Walde [walde@isd.us.com]	11/5/2012	14,224	\$ 6,688.00	7/1/2011
Kensington Square SMD (RWC)	San Mateo	SBSA	07/01/12	\$ 84.58					Treatment by SBSA	Mark Chow [mchow@co.sanmateo.ca.us] Benjamin Vazquez [bvazquez@co.sanmateo.ca.us]	8/1/2012	74	\$ 3,920.00	1/1/2012
Las Gallinas Valley SD	Marin		07/01/12	\$ 53.50			\$ 5.52			Mark Williams [mwilliams@lgsd.org] Susan McGuire [SMcGuire@lgsd.org]	7/31/2012	9,228	\$ 6,200.00	7/1/2007
Livermore	Alameda		07/01/08	\$ 40.75					Fee includes \$1.05/month for residential lateral program.	Darren Greenwood [dggreenwood@ci.livermore.ca.us]	12/13/2012	23,249	\$ 4,778.19	3/1/2012
Los Altos	Santa Clara		07/01/06	\$ 23.75					If council approves, we are increasing average single family residence rates from currently \$285 per year flat rate to an average of \$456 per year beginning July 1. It is based on average water usage for Jan Feb March, which is then annualized and multiplied by \$3.03 per HCF to arrive at the \$456 per year.	Jim Gustafson [Jim.Gustafson@ci.los-altos.ca.us]	6/22/2006			
Los Altos Hills	Santa Clara		07/01/07	\$ 61.08					Annual rate at \$70.43 per property. Treatment by Palo Alto WWTP. Our sewer rates have increased to \$733.00 per year starting July 2007.	Cyrus Kianpour [ckianpour@losaltoshills.ca.gov]; Debbie Pedro [dpedro@losaltoshills.ca.gov]; Richard Chiu [rchiu@losaltoshills.ca.gov]	4/10/2008		\$ 7,950.00	12/1/2005
Marin City	Marin	SMCSD	07/01/06	\$ 29.06										

**Bay Area Single Family Residential User Charges (fixed rate per month unless otherwise noted; annual or bimonthly rates converted to monthly)**

Period Ending January 31, 2013

Indicate the fee according to the level of service charged for:

Agency	County	Regional System / Subsystem	SFR Rate Effective Date	"Full Service" (WW Treatment & Collection, etc.)	WW Treatment, etc. excluding WW Collection	"Satellite" WW Collection Only	Property Tax/month, other fees, i.e. ad valorem	Winter Water Use (per avg hcf)	Other or Comments	Contact	Last Verified	Number of SFR Connections	SFR Connection Fee	Connection Fee Effective Date
Marin SD #2 (Corte Madera)	Marin	Central Marin Sanitation Agency	07/01/11	\$ 41.50					Full Service fixed Sewer User Service Charge collected on Marin Co Property Tax bill for customers paying property taxes or other special taxes or assessments levied against property. Corte Madera Finance Dept bills customers not receiving property tax bills once a yr in Feb for the entire FY. This is the fifth year of the five year stepped increase. The connection fee is comprised of \$2,103 to Marin SD #2 plus \$4,950 to Central Marin SA; 43% of revenues are from Property Taxes.	George Warman [gwarman@ci.corte-madera.ca.us] Barry Hogue [bhogue@ci.corte-madera.ca.us]	10/4/2011	3,579	\$ 7,255.48	7/1/2011
Mill Valley	Marin	Sewerage Agency of Southern Marin	07/01/11	\$ 50.00						City: Bryan Little (blittle@cityofmillvalley.org)	1/3/2012	4,618	\$ 5,000.00	12/5/1988
Millbrae	San Mateo		07/01/09	\$ 37.90				4.46	Use charge added to fixed charge based on average wintertime water usage for months of December, January, February, and March.	Kevin Cesar [kcesar@ci.millbrae.ca.us]; Joseph Magner [jmagner@ci.millbrae.ca.us]	4/2/2010	5,688	\$ 3,309.36	7/1/2009
Milpitas	Santa Clara	San Jose/Santa Clara tributary systems	07/05/10	\$ 35.47	\$ 35.47				Monthly fee includes collection and treatment plant O&M	Kathleen Phalen (kphalen@ci.milpitas.ca.gov); Paramit Uppal (puppal@ci.milpitas.ca.gov) (408) 586-	7/17/2010	12,078	\$ 1,908.00	7/15/2003
Montara Water and San Dist	San Mateo	Sewer Authority Mid-Coastside								msd@coastside.net				
Morgan Hill	Santa Clara									Louise Eichhorn (louise@morganhill.ca.gov)				
Mountain View	Santa Clara									Dave Serge (dave.serge@ci.mtnview.ca.us)				
Mt. View Sanitary District (MVSD)	Contra Costa		07/01/12	\$ 40.96					SFR Connections include Single Family Dwellings (5734), Multi-family Dwellings (1627), and Apartments (1202)	Sheri L. Riddle (sriddle@mvsd.org)	11/6/2012	8,563	\$ 8,745.00	7/1/2012
Napa SD	Napa		07/01/12	\$ 37.34					Rate on 7/1/12 was increased to \$448.07/year, billing annually on property tax statements. CPI increases in future years. Connection fee is scheduled to increase to \$8,300 per EDU/SRF on 7/1/2013.	Jeff Tucker [jtucker@NapaSan.com]	11/5/2012	23,412	\$ 7,000.00	7/1/2012
Novato SD	Marin		07/01/09	\$ 38.67			\$ 5.37	6.30		Beverly James [bevj@novatosan.com]	1/3/2011	29,073	\$ 8,110.00	7/1/2010
Oak Knoll SMD (RWC)	San Mateo	SBSA	07/01/12	\$ 77.50					Treatment by SBSA, Collection via agrmt Redwood City	Mark Chow [mchow@co.sanmateo.ca.us] Benjamin Vazquez [bvazquez@co.sanmateo.ca.us]	8/1/2012	131	\$ 8,445.00	1/1/2012
Oakland	Alameda	EBMUD Special Dist 1	01/01/12			\$ 29.93			SFD Sewer Connection Fee \$ 600.00 Trench Excavation Fee \$309.00	Allen Law [allaw@oaklandnet.com]	1/1/2012	92,892	\$ 1,355.20	7/1/2006
Occidental County San Dist	Sonoma	SCWA	07/01/12	\$ 140.17					Annual Direct charge on the tax roll (\$1,400.00)		7/1/2012	71	\$ 2,000.00	7/1/2012
Oro Loma SD	Alameda	East Bay Dischargers Authority	07/01/11	\$ 15.75			\$ -		Existing rate is \$189/year. A \$5/year rate increase is scheduled for July 1, 2013. The District does not collect ad valorem tax revenue.	Jason Warner [jwarner@oroloma.org] Anna Turon [aturon@oroloma.org]	1/3/2012	46,000	\$ 6,555.00	7/1/2007
Pacifica	San Mateo		07/01/06					7.33	\$7,33488 per 100 cubic feet of water consumption, an increase of 5.677% over the prior year. Minimum rate \$352.80	Gillian Cadgene [cadgene@ci.pacifica.ca.us]; Gillian Cadgene [cadgene@cityofpacifica.org]	12/5/2006			
Palo Alto	Santa Clara		07/01/12	\$ 29.31						Keniston, Eric [Eric.Keniston@CityofPaloAlto.org] 650-329-2386	7/31/2012			
Penngrove San Zone	Sonoma	SCWA	07/01/09	\$ 80.75					Annual Direct charge on the tax roll (\$969.00)		7/1/2012	349	\$ 3,356.70	7/1/2012
Petaluma	Sonoma		01/01/10	\$ 78.21				7.04	Use charge added to fixed charge based on average wintertime water usage. If no information, usage is assumed 9 hcf/month until use record is established. SFR wintertime average use of 9 hcf gives \$47.98/month.	Margaret Orr (morr@ci.petaluma.ca.us)	8/1/2010	17,347	\$ 8,363.00	7/1/2010
Piedmont	Alameda	EBMUD Special Dist 1				\$33.58 - \$60.75			Rates vary within the range given depending upon parcel size	Kouros Iranpour [kiranpour@harris-assoc.com]	10/7/2008	3,800	N/A	
Pinole	Contra Costa		07/01/10	\$ 47.37					Verified rate increase from City's webpage http://www.ci.pinole.ca.us/publicworks/docs/Sewer%20Rate%20Increase%202009.pdf	Mark Adams [madams@ci.pinole.ca.us] pubwks@ci.pinole.ca.us	8/2/2010			
Pittsburg	Contra Costa	Delta Diablo SD	07/01/11		\$ 19.87				DDSD rate adopted 6/8/2011 for FY11/12 City collection system note: plus \$1.89/1000 gal water use	DDSD: Harris, Theresa U. [theresah@ddsd.org] City: Walter Pease [WPease@ci.pittsburg.ca.us]	2/11/2011	16,709	\$ 5,033.00	7/12/2006
Pleasanton	Alameda		01-01-2012	\$ 69.07	\$ 47.00	\$ 22.07			WW charges include local collection fees and treatment/disposal fees for DSRSD/LAVWMA. WW user rates and connection fees are adjusted based on Consumer Price Index San Francisco, Oakland San Jose region on July 1st of each year.	Abbas Masjedi [amasjedi@ci.pleasanton.ca.us]	2/14/2012	16,500	\$ 14,703.00	2/14/2012
Port Costa Sanitary Dept.	Contra Costa		07/01/12	\$ 144.92					This Dept. of Crockett CSD replaced CCCSD #5 in 2008.	Dale McDonald [manager@town.crockett.ca.us]	1/12/2012	77	\$ 5,500.00	6/25/2005
Redwood City	San Mateo	SBSA	07/01/12	\$ 57.88						Terence Kyaw [tkyaw@redwoodcity.org] Russell Narahara, marahara@redwoodcity.org	5/15/2012	14,000	\$ 960.00	
Richardson Bay SD	Marin	Sewerage Agency of Southern Marin	07/01/11	\$ 20.50							2/10/2012	4,598		
Rio Vista	Solano		07/01/03	\$ 35.10										
Rodeo SD	Contra Costa		07/01/03	\$ 36.92						Steve Beal [rsd@value.net]				
Rohnert Park, City of	Sonoma	Laguna Sub-Regional WW Treatment Plant												
Russian River Co San Dist	Sonoma	SCWA	07/01/12	\$ 100.92					Annual Direct charge on the tax roll (\$1,036.00)		7/1/2012	2,465	\$ 5,228.00	7/1/2012

**Bay Area Single Family Residential User Charges (fixed rate per month unless otherwise noted; annual or bimonthly rates converted to monthly)**

Period Ending January 31, 2013

Indicate the fee according to the level of service charged for:

Agency	County	Regional System / Subsystem	SFR Rate Effective Date	"Full Service" (WW Treatment & Collection, etc.)	WW Treatment, etc. excluding WW Collection	"Satellite" WW Collection Only	Property Tax/month, other fees, i.e. ad valorem	Winter Water Use (per avg hcf)	Other or Comments	Contact	Last Verified	Number of SFR Connections	SFR Connection Fee	Connection Fee Effective Date
San Bruno	San Mateo		07/01/12	\$ 20.02					Multi-year fee increases for FY 12-13 through FY 16/17 - (City Code). Wastewater charges include SSF/San Bruno WWTP.	Robert Wood [rwood@sanbruno.ca.gov]	1/15/2013	9,410	\$ 3,495.00	7/1/2012
San Carlos, City of	San Mateo	SBSA	07/01/12	\$ 53.10			\$ 53.10		San Carlos City Council approved a 6% rate increase over previous year; collected on property tax roll	Keith Hanna [khanna@cityofsancarlos.org] Jay Walter [jwalter@cityofsancarlos.org]	8/16/2012	11,045	\$ 4,500.00	10/1/2007
San Francisco PUC	San Francisco		07/01/11	\$ 53.00					Effective 07/01/11, the first 3 units of discharge at \$7.16/Ccf, and all additional discharge units at \$9.55/Ccf. The average number of discharge units per month for single-family dwellings is 6.3 units each month. The average monthly single-family residential rate is \$7.16 x 3 + \$9.55 x 3.3 = \$53.00 (NB: The rates are scheduled to increase effective 07/01/12 to \$7.52 / \$10.03.)	Bruce Seale (bseale@sfwater.org)	6/15/2012	~109,500	\$ 3,125.00	7/1/2009
San Jose	Santa Clara	San Jose/Santa Clara tributary systems	07/01/11	\$ 33.83					Monthly fee includes Collection, treatment plant O&M and Replacement	Lillian Nguyen (Lillian.Nguyen@sanjoseca.gov)	7/18/2011			
San Leandro	Alameda	East Bay Dischargers Authority	07/01/09	\$ 26.29						Dean Wilson(dwilson@ci.san-leandro.ca.us)	5/12/2009	13,848	\$ 1,332.00	7/1/2009
San Mateo, City of	San Mateo		07/18/12	\$ 50.48				8.00	Charge for FY12-13 is based on \$6.31 per HCF of average water use for the five winter months of November through March. SFR average use of 8.0 HCF or \$50.48 per month.	Jean Hill [jhill@cityofsanmateo.org]	9/27/2012		\$ 2,374.00	7/1/2012
San Rafael SD	Marin	Central Marin Sanitation Agency	07/01/12	\$ 53.13					The Sewer Service Charge continues to be \$53.13 per month for FY 2012-13 (\$537.50 annual fee) and the Sewer Connection fee is \$3,082.51 for FY 2012-13.	Doris Toy [doris.toy@cityofsanrafael.org] Cindy Hernandez [cindy.hernandez@cityofsanrafael.org]	11/5/2012	7,195	\$ 3,082.51	7/1/2012
Sanitary District No. 1 of Marin County (City of Larkspur)	Marin	Central Marin Sanitation Agency	07/01/09	\$ 47.67					The Sewer Service Charge will be \$47.67 per month effective 7-1-09 for FY 2009-10 (\$572.00 annual fee) for City of Larkspur residents.	John Clark	2/19/2008	18,825	\$ 5,000.00	7/1/2007
Sanitary District No. 1 of Marin County (Ross Valley)	Marin	Central Marin Sanitation Agency	07/01/11	\$ 53.13						John Clark	2/19/2008	18,825	\$ 5,000.00	7/1/2007
Santa Clara	Santa Clara	San Jose/Santa Clara tributary systems	07/01/11	\$ 22.31					Monthly fee includes collection and treatment plant O&M	Chris de Groot [cdgroot@santaclaraca.gov]	7/19/2011	19,800	\$ 12,616.00	7/1/2011
Santa Rosa	Sonoma		01/06/02	\$ 49.29										
Santa Rosa, City of	Sonoma	Laguna Sub-Regional WW Treatment Plant												
Sausalito, City of	Marin	SMCSD	07/01/06				\$ 24.83		City owns collection sys & charges by water usage formula	Tom Birse [tbirse@ci.sausalito.ca.us]				
Sausalito-Marín City Sanitary District (SMCSD)	Marin	SMCSD								Bob Simmons [bob@smcsd.net]	6/22/2006			
Scenic Heights CSD (San Carlos)	San Mateo	SBSA	07/01/12	\$ 90.00					Treatment by SBSA	Mark Chow [mchow@co.sanmateo.ca.us] Benjamin Vazquez [bvazquez@co.sanmateo.ca.us]	8/1/2012	58	\$ 3,920.00	1/1/2012
Sea Ranch San Zone	Sonoma	SCWA	07/01/12	\$ 79.08					Annual Direct charge on the tax roll (\$878.00)		7/1/2012	554	\$ 4,195.96	7/1/2012
Sebastopol, City of	Sonoma	Laguna Sub-Regional WW Treatment Plant								Richard Emig (sebwp@sonic.net); remig@cityofsebastopol.org				
Sewer Authority Mid-Coastside	San Mateo	Sewer Authority Mid-Coastside								Anthony Pullin (tony@samclearwater.org); John F. Foley III (jack@samclearwater.org)				
Sewerage Agency of Southern Marin	Marin	Sewerage Agency of Southern Marin								Steve Danehy (sdanehy@cityofmillvalley.org)	9/2/2008	18,946		
Sonoma County Water Agency (SWCA)	Sonoma	SCWA							No change to SCWA operated facilities, our new rates will be applied July 1, 2010	Hody Wilson (hody@scwa.ca.gov or Kevin Boker [kboker@scwa.ca.gov]; Pamela Jeane [pam@scwa.ca.gov]; Manuel Olvera [molvera@scwa.ca.gov])	7/1/2012			
Sonoma Valley Co San Dist	Sonoma	SCWA	07/01/12	\$ 64.33					Annual Direct charge on the tax roll (\$732.00)		7/1/2012	10,195	\$ 11,956.86	7/1/2012
South Bayside System Authority (SBSA)	San Mateo	SBSA							POTW	Bob Donaldson (rdonaldson@sbsa.org); Dan Child (dchild@sbsa.org);				
South Park San Dist	Sonoma	Laguna Sub-Regional WW Treatment Plant		\$ 58.75					Annual Direct charge on the tax roll (\$705)		3/31/2007			
South San Francisco/San Bruno POTW	San Mateo	NA	7/1/11 same for 7/1/12	\$ 44.33	N/A	N/A	N/A	N/A	\$532 annual residential rate for FY 12-13 for SSF. San Bruno residential rate is listed above.	Terry White [Terry.White@saf.net]; James Hardie [james.hardie@saf.net]	11/5/2012	11,844	\$ 3,687	1/1/2012
Stege SD	Contra Costa	EBMUD Special Dist 1	07/01/12			\$ 16.25				Rex Delizo (rex@stegesd.dst.ca.us)	7/1/2012	12,319	\$ 1,324.00	6/24/2007
Suisun City	Solano	Fairfield-Suisun SD							\$5.057/mi of pipe (FSSD subvention)			7,942	N/A	
Sunnyvale	Santa Clara		07/01/10	\$ 29.23					New rate effective 7/1/10 and at \$29.23 represents a 4.5% increase over previous year.	Jim Craig [jcraig@ci.sunnyvale.ca.us]; Joanna De Sa (JDeSa@ci.sunnyvale.ca.us)	7/7/2010	28,014	\$ 3,023.00	7/1/2008 (continues into FY 2009-2010)
Sund SD	Santa Clara	San Jose/Santa Clara tributary systems	07/01/06	\$ 13.34	\$ 13.42				Monthly fee includes collection and treatment plant O&M	Karen McDonough [Karen.McDonough@sanjoseca.gov]	7/18/2007			
Tamapais Community Svcs Dist (TCSD)	Marin		07/01/08	\$ 84.42					The TCSD is a collection system, we pay treatment fees and capital improvement "contributions" to Southern Marin Sewerage Agency (SASM), and to Sausalito Marin City Sanitary District (SMCSD). Effective July 1, 2010, the SFR EDU rate for wastewater collection (and treatment) for the TCSD customers is \$1,013 per year, or \$84.42 per month.	Jerry Taylor [jtaylor@tcsd.us]	8/22/2011	1,966	\$ 4,500.00	
Tiburon SD (Sanitary District No. 5 of Marin County)	Marin		07/01/11	\$ 59.75			\$ 22.33			Robert L. Lynch [rlynch@sanis.org]	2/10/2012			

**Bay Area Single Family Residential User Charges (fixed rate per month unless otherwise noted; annual or bimonthly rates converted to monthly)**

Period Ending January 31, 2013

Indicate the fee according to the level of service charged for:

Agency	County	Regional System / Subsystem	SFR Rate Effective Date	"Full Service" (WW Treatment & Collection, etc.)	WW Treatment, etc. excluding WW Collection	"Satellite" WW Collection Only	Property Tax/month, other fees, i.e. ad valorem	Winter Water Use (per avg hcf)	Other or Comments	Contact	Last Verified	Number of SFR Connections	SFR Connection Fee	Connection Fee Effective Date
Union SD	Alameda	East Bay Dischargers Authority	07/01/12	\$ 26.63					SSC collected on the Alameda County property tax bill, includes Fremont, Newark and Union City. Effective dates listed are budget year dates. Administrative effective dates are a bit later. USD adopted a three-year Prop. 218 notice in 2010, 5% for each of the next three years through 6/30/13.	Maria Scott [maria_scott@unionsanitary.com]; Jennifer Sio-Kwok [jennifer_sio-kiwok@unionsanitary.com]	7/1/2012	67,463	\$ 4,844.73	7/1/2012
Vacaville	Solano		03/01/03	\$ 25.33										
Vallejo SFCO	Solano		07/01/12	\$ 41.26					Users are charged an additional \$1.38/mo for upper lateral program and \$1.97/mo for stormwater. Approved rate increases. (2.5% for each of the fiscal years 2012-13, 2013-14, and 2014-15).	Ron Matheson, Dist Mgr (rmatheson@vsfcd.com) Ken Spray, Fin Dir (kspray@vsfcd.com)	4/23/2012	33,873	\$ 2,500.00	11/1/2011
West Bay Sanitary District	San Mateo	SBBSA	07/01/12	\$ 62.66					Information on rate increases contained in Gen Regulations, Article IX. One year rate increase July 1 2012 through June 30, 2013. see <a href="http://westbaysanitary.org/pdf/00200F%20GENERAL%20REGULATIONS.pdf">http://westbaysanitary.org/pdf/00200F%20GENERAL%20REGULATIONS.pdf</a>	Phil Scott, pscott@westbaysanitary.org	11/4/2012		\$7,992.00	9/26/2012
West County WD	Contra Costa		07/01/11	\$ 23.25					Adopted 5-year Prop. 218 notice beginning 7/1/11, approx. 7% increase each year. FY 12/13 will be \$304/ERU annually.	E. J. Shalaby, General Manager [eshalaby@wcvd.org] Beverly A. Marshall, Mgr. of Finance & Admin. Services [bmarshall@wcvd.org]	4/23/12	32,299	\$ 2,762.00	7/1/11
West Valley SD	Santa Clara	San Jose/Santa Clara tributary systems	07/01/12	\$ 27.55					Approved increase of 5% +/- for next three years beginning 7/01/2010. Final adjustment of approved three year rate increase goes into effect on 7/01/12 for an increase of 6% (to \$27.55) for FY 2012/2013.	Jon Newby (jnewby@westvalleysan.org) Oyama (ooyama@westvalleysan.org) Leshia Luu (llu@westvalleysan.org) Gil Acosta (gacosta@westvalleysan.org)	7/10/2012	31,290	\$ 8,088.60	7/1/2012
Yountville, Town of	Napa		07/01/07	\$ 41.77					Billing is bi-monthly	Don Moore [DonM@yville.com]	5/30/2007	695	\$ 5,667.00	7/1/2007

**How To Use The Drop-Down Menus in Columns A & B**

- To enter information for your agency, you may now use the drop-down menu provide in Column "A" to select your agency by name.
- To benchmark against other agencies in your region use the County drop-down menu in Column "B" to select your regional.
- To see agencies under the same Regional System, i.e. satellites of a regional system use the Microsoft "Data" menu, select "Sort" then sort by Regiona System / Subsystem
- To view the full list of all agencies or reset the full list of all agencies, each drop-down menu should be set to "All" and the "DATA" sort feature set to "Agency" (Column A)

**Disclaimer:** This survey tool does not replace or in anyway function as a substitute for the annual survey of agencies' treatment works that is compiled by the State Water Board. This survey tool is strictly a benchmarking tool with voluntary participation by agencies and the information contained in this survey is provided by the participating agencies. The Bay Area Clean Water Agencies (BACWA) provides no warranty, expressed or implied, including the warranties of merchantability and fitness for a particular purpose, as to the accuracy, reliability or completeness of data or content that is contained in this survey tool. BACWA neither guarantees nor assumes any legal liability or responsibility for the accuracy, completeness, or usefulness of any information or content contained in this survey tool. For more detailed information about the rates or fees of a specific agency, please contact the agency directly.

## POTENTIAL PARDEE AGENDA ITEMS

(not in order of priority)

- ❖ **Committees**
  - Review existing structure and funding
  - Assess pros and cons of separate programs vs. dues based support
  - Role of Committees (when to recommend vs. act on behalf of BACWA)
  - Succession Planning
  - Coordination with AED/ED
- ❖ **Financial Projections for Coming Years**
  - Member dues structure
- ❖ **How to Better Involve Non-Principal Members in BACWA**
- ❖ **Contracting Policy and Procedures**
  - Review authorization limits
  - Exceptions to Policy to Provide Continuity
  - Reallocation of scopes of work
  - Approving subcontractors
  - Consultation solicitation
- ❖ **Policy and Procedure Review and Revisions**
- ❖ **Consolidation of BACWA Funds**
- ❖ **Regulatory Strategy**
  - **Nutrients**
    - **Governance**
    - **Trading**
    - **Watershed Permit Negotiations**
    - **Funding**
    - **Early Actions**
  - **Selenium**
  - **CECs**
  - **Other**
- ❖ **Web Site Enhancement**
- ❖ **External Relations**
  - **Representation (RMP, ASC/SFEI, Tri-TAC, CASA, NACWA, Summit Partners, others)**
  - **Coalition Building**
- ❖ **Update Strategic Plan**
- ❖ **Staff Performance Plans**

**BAY AREA CLEAN WATER AGENCIES  
SUCCESSION PLANNING  
July 25, 2013**

**A. BACWA Principal Representation**

<b>Agency</b>	<b>Representative</b>	<b>Title &amp; Roles</b>
EBMUD	Ben Horenstein	
	Dave Williams (Alternate)	Joint ASC/SFEI, Board Representative Summit Partners Representative
	Ed McCormick (Alternate)	
SFPUC	Laura Pagano	BACWA, Vice Chair BACWA, Finance Committee BACWA, Ad Hoc Conflict of Interest Committee Joint ASC/SFEI, Board Representative
	Tommy Moala (Alternate)	
	Marla Jurosek (Alternate)	
City of San Jose	Jim Ervin	Joint ASC/SFEI, Board Alternate
	Joanna De Sa (Alternate)	
EBDA	Mike Conner	BACWA, Chair BACWA, Finance Committee BACWA, Ad Hoc Conflict of Interest Committee
	Rich Currie (Alternate)	
	David Stoops (Alternate)	
CCCSD	Curt Swanson	
	Tim Potter (Alternate)	



## B. Other BACWA Representation

Agency	Representative	Successor	Notes
RMP Technical Committee	Rod Miller, SFPUC		
RMP Steering Committee	Karin North, Palo Alto Jim Ervin, City of San Jose		Dan Tafolla from VSFCD is also a POTW member of the Committee
Summit Partners	Dave Williams		
Joint SFEI/ASC Board	Laura Pagano		One seat on loan from BACWA to Sac Regional
	Dave Williams		
	Kirsten Struve (Alternate)		
	Jim Ervin (Alternate)		

## C. BACWA Committees

Committee	Chair	Vice Chair	Potential Succession Date	Comments
AIR	Nohemy Revilla, SFPUC Randy Schmidt, CCCSD		7/2014	Represents BACWA on CWCCG.
Biosolids	Matt Krupp, Palo Alto	Zachary Kay, City of Santa Rosa	7/2014	
BAPPG	Karri Ving, SFPUC	Mike Auer, Union Sanitary District	7/2014	
Collection Systems	Dan Stevenson, Sunnyvale	Vince Falzon, Burlingame	7/2014	
Laboratory	Mary Lou Esparza, CCCSD		7/2014	Chair rotates each year among the five principals
Permits	Tim Potter, CCCSD		TBD	
Water Recycling	Cheryl Munoz, SFPUC	Linda Hu, EBMUD	TBD	Coordinates with IRWMP
Info Share Groups	Mike Barnes, Kennedy Jenks (Consultant)			

**2014 BACWA EXECUTIVE BOARD  
REGULAR MONTHLY MEETING SCHEDULE**

<b>DATE</b>	<b>TIME</b>	<b>LOCATION</b>
January 23, 2014 <i>(Annual Member Meeting – no regular Board meeting in January)</i> * 4 <sup>th</sup> Thurs due to conflict with CASA conference	8:30 – 2:00	Laurel Room / Calendow Conference Center 1111 Broadway, 7 <sup>th</sup> Floor Oakland, CA
February 21, 2014	9:00 – 12:00	TBD (EBMUD Lab Library/SFPUC)
March 21, 2014	9:00 – 12:00	TBD (EBMUD Lab Library/SFPUC)
April 18, 2014	9:00 – 12:00	TBD (EBMUD Lab Library/SFPUC)
May 16, 2014	9:00 – 12:00	TBD (EBMUD Lab Library/SFPUC)
June 20, 2014	9:00 – 12:00	TBD (EBMUD Lab Library/SFPUC)
July 18, 2014	9:00 – 12:00	TBD (EBMUD Lab Library/SFPUC)
August 15, 2014	9:00 – 12:00	TBD (EBMUD Lab Library/SFPUC)
September 19, 2014	9:00 – 12:00	TBD (EBMUD Lab Library/SFPUC)
October 22 – 24, 2014 <i>(Pardee Tech Seminar)</i>	TBD	EBMUD Pardee Facility
<b>Friday</b> , November 21, 2013	9:00 – 12:00	TBD (EBMUD Lab Library/SFPUC)
<b>Friday</b> , December 19, 2013 <i>(Holiday Lunch)</i>	9:00 – 2:00	TBD (EBMUD Lab Library/SFPUC)

## Remaining Board Meeting Dates for 2013

August 29, 2013	9:00 – 12:00	EBMUD Lab Library
September 26, 2013	9:00 – 12:00	EBMUD Lab Library
October 23 – 25, 2013 <i>(Pardee Tech Seminar)</i>	TBD	EBMUD Pardee Facility
<b>Friday</b> , November 15, 2013 <i>Note: As requested at the 6/27 BACWA Board meeting this meeting date has been changed (originally scheduled for Fri 11/22/2013)</i>	9:00 – 12:00	EBMUD Lab Library
<b>Friday</b> , December 20, 2013 <i>(Holiday Lunch)</i>	9:00 – 2:00	EBMUD Lab Library

## CASA 2014 Conferences

### MID-YEAR CONFERENCE

January 15-17, 2014

[Renaissance Esmeralda Indian Wells, CA](#)

877-622-3140

### D.C. CONFERENCE

February 24 – 26, 2014

[Mayflower Renaissance Washington, DC](#)

800- 266-9432

### SPRING CONFERENCE

April 28 – 29, 2014

Sheraton Grand Hotel, Sacramento

### ANNUAL CONFERENCE

August 20 – 23, 2014

Marriott Monterey

350 Calle Principal

Monterey, CA

## NACWA 2014 Conferences

### **2014 Winter Conference**

February 2 – 5, 2014

[LaFonda on the Plaza Hotel](#)

Santa Fe, NM

### **National Environmental Policy Forum**

April 6 – 9, 2014

[Capital Hilton](#)

Washington, D.C.

### **Summer Conference & 43rd Annual Meeting**

July 13 – 16, 2014

[The Nines](#)

Portland, OR

### **National Pretreatment & Prevention Workshop**

Date: TBD

Location TBD

### **Developments in Clean Water Law Seminar**

Date: TBD

Location TBD

## WEF 2013 Conferences and Seminars

### The Utility Management Conference™ 2014

Hyatt Regency Savannah  
Savannah, Georgia  
February 25-28, 2014

### Collection Systems 2014: Collection on the Chesapeake

Baltimore Convention Center  
Baltimore, Maryland  
March 11 - 14, 2014

### Residuals and Biosolids 2014 - Sustainability Made Simple: Facilitating Resource Recovery

Austin Convention Center  
Austin, Texas  
May 18 – 21, 2014

### Odors and Air Pollutants 2014

Hyatt Regency Miami  
Miami, Florida  
May 31 – June 3, 2014