



2011 Highlights

Annual Member Meeting

January 26, 2012



MISSION



Through leadership, science and advocacy, BACWA provides an effective regional voice for the clean water community's role in stewardship of the San Francisco Bay environment.



GOALS



Member Service

1. Members are informed of critical issues and activities.
2. Members comply with applicable rules and regulations.

Informed Regulation

3. Environmental regulations and policies reflect the best available scientific, technical, and economic information.
4. Regulations consider environmental, social and economic sustainability.

Environmental Stewardship

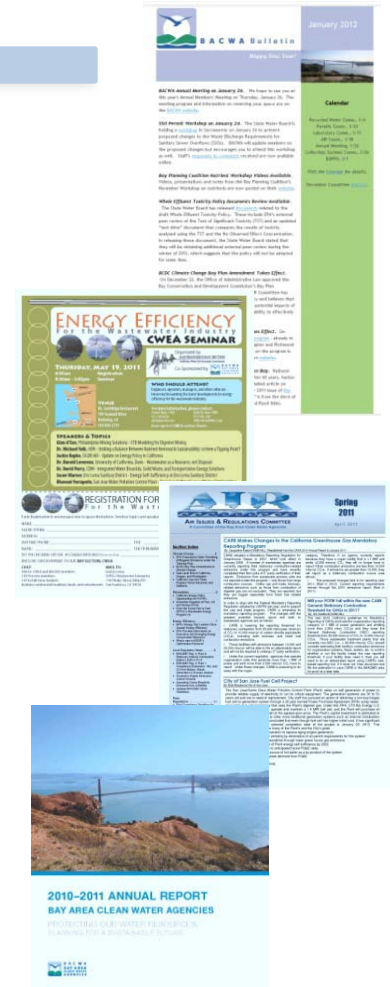
5. Members optimize the value available from wastewater.
6. Watershed management principles are applied to address San Francisco Bay management challenges.



MEMBER SERVICE

Communications

- Newsletters
 - BACWA Bulletin!
 - AIR Annual Newsletter
 - BAPPG Newsletter & Baywise Website
- Reports
 - Annual Report
 - Recycled Water Report
 - Rate Database
- Workshops & Info-Sharing
 - Permit reissuance
 - Strass & energy efficiency
 - Nutrient science & management
 - ERS transition
 - Toxicity
 - Nutrient Science & Management
 - Collection Systems "Tech Topics"





MEMBER SERVICE

Compliance Assistance : Mercury

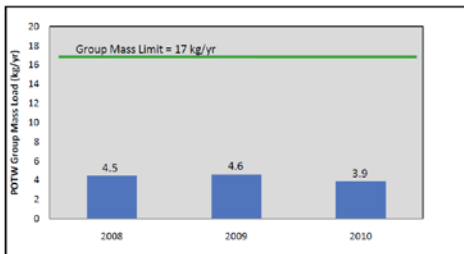


Figure 1. Trend in Estimated Annual Mercury Mass Emissions for Municipal Dischargers to San Francisco Bay Compared to Annual Mass Limit

Mass Emissions

Exhibit 15 - Waste Mercury Discharges For Five Districts (Baseline)

District	Practitioners	Hg Waste		Captured Hg		Discharged Hg	
		(g/yr)	Pct.	(g/yr)	Pct.	(g/yr)	Pct.
Palo Alto	221	25,875	-69%	-17,854	31%	8,021	
San Francisco - SE	510	47,439	-73%	-34,582	27%	12,856	
San Francisco - OS	192	16,074	-71%	-11,405	29%	4,668	
San Mateo	83	10,773	-56%	-6,066	44%	4,707	
Union Sanitary Dist	267	27,819	-79%	-21,977	21%	5,842	
		<u>127,980</u>	<u>-72%</u>	<u>-91,883</u>	<u>28%</u>	<u>36,094</u>	

Dental Amalgam

A guide to eating San Francisco Bay fish and shellfish
Men over 17 and women over 65

What's a serving?
For adults, one portion of fish is about the size and weight of a palm. For children and teens, it's about the size of a fist.

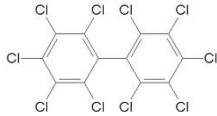
Do not eat:
Do not eat fish that are high in mercury. These include shark, swordfish, king mackerel, tilefish, and bigeye tuna.

Risk Reduction



MEMBER SERVICE

Compliance Assistance : **PCBs, Cu, HCN, FOG**

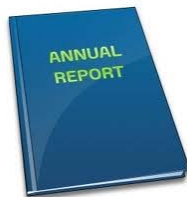


PCBs: Sampling Analysis & Reporting Protocols



Regional Outreach Requirements

- Fats, Oils, Grease Campaign
- PCBs in Building Materials
- Copper & Cyanide Fact Sheets
- Hg Trainings & Outreach



Annual Permit Reporting

- Cu & HCN Action Plans
- RMP Participation
- TMDL Support



MEMBER SERVICE

Financial Assistance



- *\$12,500,000* Prop 50
- *\$30,000,000* Prop 84
- IRWMP Plan Update





INFORMED REGULATIONS

PCBs

- Permit adopted April 2011
- 1668C Analysis and reporting issues resolved
- Preliminary data analysis complete

Selenium

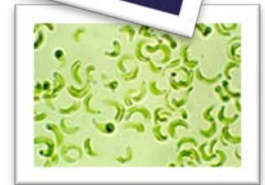
- Effluent characterization study underway

Sanitary Sewer System WDR

- Regional comments prepared
- Sewer System Management Plan feedback provided

Pretreatment Programs

- Monitoring & reporting clarifications & streamlining





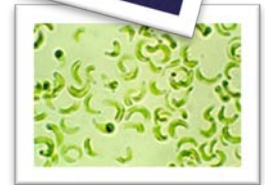
INFORMED REGULATIONS

Whole Effluent Toxicity Policy

- Comments on draft policy
- Expert review
- Meetings with State & Regional Water Boards

Nutrients

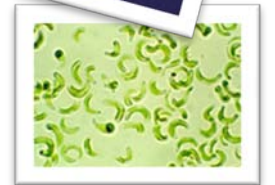
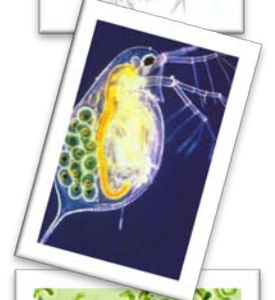
- Expert review of the NNE Literature Review
- June RMP Workshop
- Suisun Bay studies
- CCCSD Permit Comments
- South Bay loading study
- Topic papers: Infrastructure, Modeling, Regulatory
- Nutrient Effluent Characterization





INFORMED REGULATIONS

Climate Change Bay Plan Amendment, Cap & Trade, GHG Reporting, EPA Dental Amalgam HG Rule, Pesticide Registration, Green Chemistry, Biosolids VOC Emissions, Contaminants of Emerging Concern, Sediment Quality Objectives, Climate Change Adaptation, Bypasses for Routine Maintenance, Methy-Imercury Criteria, Blending, Shellfish Beneficial Use....on and on...





ENVIRONMENTAL STEWARDSHIP

Partnerships

- Clean Water America Alliance
- Product Stewardship Institute
- CASA Green Chemistry & Pesticide Regulation
- Regional Outreach and Education Campaign
- Engineering Research Center (ERC) for Re-inventing the Nation's Urban Water Infrastructure (ReNUWIt)

Projects

- Nutrients
- Strass Energy Workshop
- Regional Recycled Water Report
- Recycled Water Landscape Irrigation Guide
- BAPPG's P2 Campaigns



Thank you!

Jim Kelly, Executive Board • Bhupinder Dhaliwal, Laboratory • Francois Rodigari, Laboratory • Natalie Sierra, Biosolids • Jennifer Jackson, BAPPG